



POLYCLONAL ANTIBODY

For research use only. Not for clinical diagnosis.

Catalog No. CZA-007

Anti AMY1C

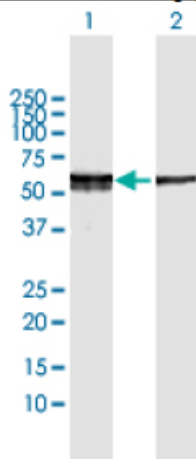
Product type	Primary antibodies
Immunogen	AMY1C (AAI56581.1, 1 a.a. ~ 511 a.a) full-length human protein.
Form	Liquid Protein G purified
Quantity	100ug
Buffer	PBS
Preservative	ProClin (15ppm)
Specificity	Human
Host	Rabbit

Immunogen Sequence	MKLFWLLFTIGFCWAQYSSNTQQGRTSIVHLFEWRWVDIALECERYLAPKGFGGVQVSP NENVAIHNPFRPWWERYQPVSYKLCTRSGNEDEFNRMVTRCANNVGVRIYVDAVINHMCGN AVSAGTSSTCGSYFNPGSRDFPAVPYSGWDFNDGKCKTGSGDIENYNDATQVRDCRLSGL LDLALGKDYVRSKIAEYMNHLIDIGVAGFRIDASKHMWPGDIKAILDKLHNLNSNWFPEG SKPFIYQEVIDLGGPEIKSSDYFGNGRVTEFKYGAKLGTVIRKWNGEKMSYLKNWGEWG FMPSDRALVFVDNHDNQRGHGAGGASILTFWDARLYKMAVGFMLAHPYGFTRVMSSYRWP RYFENGKDVNDWVGPPNDNGVTKEVTINPDTTCGNDWVCEHRWRQIRNMVFNFRNVVDGQ PFTNWDYDNGSNQVAFGRGNRGFIVFNDDWTFSLTLQTGLPAGTYCDVISGDKINGNCTGI KIYVSDDGKAHFSISNSAEDPFIAIHAESKL
---------------------------	---

Gene Alias AMY1

Application notes **WB**
Antibody dilution: 1:1000 ~ 1:2000. Specific band of ~56.21 kDa using AMY1C transfected 293T lysate.

Western Blotting (Transfected lysate)



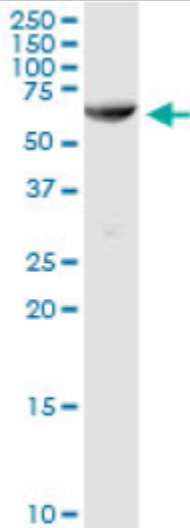
Western Blot analysis of AMY1C expression in transfected 293T cell line by AMY1C rabbit polyclonal antibody.

Lane 1: AMY1C transfected lysate(56.21 KDa).

Lane 2: Non-transfected lysate.

Antibody dilution: 1:1000. Western Blot analysis of AMY1C expression in HeLa (Predicted Mw: 57.7680 kDa).

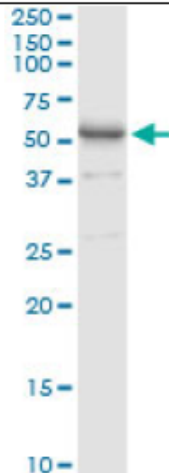
Western Blotting (Cell lysate)



AMY1C rabbit polyclonal antibody. Western Blot analysis of AMY1C expression in HeLa.

Antibody dilution: 1:1000. Western Blot analysis of AMY1C expression in human pancreas (Predicted Mw: 57.7680 kDa).

Western Blotting (Tissue lysate)



AMY1C rabbit polyclonal antibody. Western Blot analysis of AMY1C expression in human pancreas.

Storage

For continuous use, store at 2-8°C for one-two days. For extended storage, store in -20°C freezer. Working dilution samples should be discarded if not used within 12 hours.

Production

Cosmo Bio Co., Ltd., Japan

For research use only, Not for diagnostic use.



COSMO BIO Co., LTD.

【JAPAN】
TOYO EKIMAE BLDG. 2-20, TOYO 2-CHOME,
KOTO-KU, TOKYO 135-0016, JAPAN
Phone: +81-3-5632-9610
FAX: +81-3-5632-9619
URL: <https://www.cosmobio.co.jp/>



COSMO BIO USA

【Outside Japan】
2792 Loker Ave West, Suite 101
Carlsbad, CA 92010, USA
email: info@cosmobioussa.com
Phone/FAX: (+1) 760-431-4600
URL: www.cosmobioussa.com