



**POLYCLONAL ANTIBODY**

*For research use only. Not for clinical diagnosis.*

**Catalog No. CZA-006**

# Anti POR

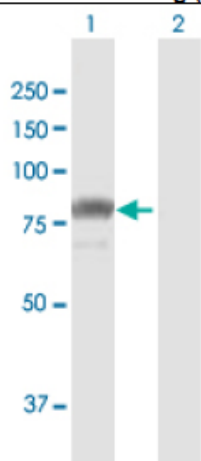
<b>Product type</b>	Primary antibodies
<b>Immunogen</b>	POR (AAH34277.1, 1 a.a. ~ 680 a.a) full-length human protein.
<b>Form</b>	Liquid Protein G purified
<b>Quantity</b>	100ug
<b>Buffer</b>	PBS
<b>Preservative</b>	ProClin (15ppm)
<b>Specificity</b>	Human
<b>Host</b>	Rabbit

**Immunogen Sequence**  
MINMGDSHVDTSSSTVSEAVAAEEVSLFSMTDMILFSLIVGLLTYWFLFRKKKEEVPEFTKI  
QTLTSSVRESSFVEKMKKTGRNIIVFYGSQTGTAEEFANRLSKDAHRYGMRGMSADPEEY  
DLADLSSLPEIDNALVFCMATYGECDPTDNAQDFYDWLQETDVDLSGVKFAVFGLGNKT  
YEHFNAMGKYVDKRLEQLGAQRIFELGLGDDDDGNLEEDFITWREQFWLAVCEHFGVEATG  
EESSIRQYELVVHTDIDAAKVYMGEMGRLKSYENQKPPFDAKNPFLAAVTTNRKLNQGTE  
RHLMHLELDISDSKIRYESGDHVAVYPANDSALVNQLGKILGADLDVVM SLNNLDEESNK  
KHPFPCPTS YRTALTYLDITNPPRTNVL YELAQYASEPSEQELLRKMASSSGEGKELYL  
SWVVEARRHILAILQDCPSLRPPIDHLCCELLPRLQARYYSIASSSKVHPNSVHICAVVVE  
YETKAGRINKGVATNWLRAKEPVGENGGRALVPMFVRKSQFRLPFKATTPVIMVGP GTGV  
APFIGFIQERAWLRQQGKEVGETLLYYGCRRSDEDYLYREELAQFH RDGALTQLNVAFSR  
EQSHKVVYVQHLLKQDREHLWKLIEGGAHIIYVCGDARNMARDVQNTFYDIVAELGAMEHAQ  
AVDYIKKLMTKGRYSLDVWS

**Gene Alias** CPR, CYPOR, DKFZp686G04235, FLJ26468, P450R

**Application notes** **WB**  
Antibody dilution: 1:1000 ~ 1:2000. Specific band of ~77.10 kDa using POR transfected 293T lysate.

### Western Blotting (Transfected lysate)



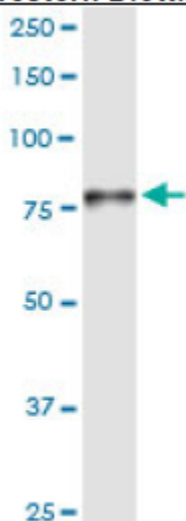
Western Blot analysis of POR expression in transfected 293T cell line by POR rabbit polyclonal antibody.

Lane 1: POR transfected lysate(77.10 KDa).

Lane 2: Non-transfected lysate.

Antibody dilution: 1:1000. Western Blot analysis of POR expression in human liver (Predicted Mw: 76.6900 kDa).

### Western Blotting (Tissue lysate)



POR rabbit polyclonal antibody. Western Blot analysis of POR expression in human liver.

#### Storage

For continuous use, store at 2-8°C for one-two days. For extended storage, store in -20°C freezer. Working dilution samples should be discarded if not used within 12 hours.

#### Production

Cosmo Bio Co., Ltd., Japan

For research use only, Not for diagnostic use.



**COSMO BIO Co., LTD.**

**【JAPAN】**  
TOYO EKIMAE BLDG. 2-20, TOYO 2-CHOME,  
KOTO-KU, TOKYO 135-0016, JAPAN  
Phone: +81-3-5632-9610  
FAX: +81-3-5632-9619  
URL: <https://www.cosmobio.co.jp/>



**COSMO BIO USA**

**【Outside Japan】**  
2792 Loker Ave West, Suite 101  
Carlsbad, CA 92010, USA  
email: [info@cosmobioussa.com](mailto:info@cosmobioussa.com)  
Phone/FAX: (+1) 760-431-4600  
URL: [www.cosmobioussa.com](http://www.cosmobioussa.com)