



POLYCLONAL ANTIBODY

For research use only. Not for clinical diagnosis.

Catalog No. CZA-006

Anti POR

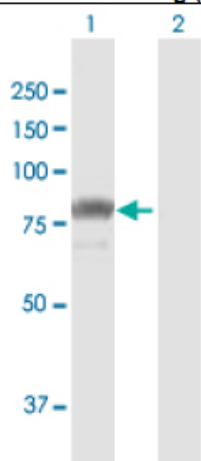
Product type	Primary antibodies
Immunogen	POR (AAH34277.1, 1 a.a. ~ 680 a.a) full-length human protein.
Form	Liquid Protein G purified
Quantity	100ug
Buffer	PBS
Preservative	ProClin (15ppm)
Specificity	Human
Host	Rabbit

Immunogen Sequence
MINMGDSHVDTSSSTVSEAVAAEEVSLFSMTDMILFSLIVGLLTYWFLFRKKKEEVPEFTKI
QTLTSSVRESSFVEKMKKTGRNIIVFYGSQTGTAEEFANRLSKDAHRYGMRGMSADPEEY
DLADLSSLPEIDNALVFCMATYGECDPTDNAQDFYDWLQETDVDLSGVKFAVFGLGNKT
YEHFNAMGKYVDKRLEQLGAQRIFELGLGDDDDGNLEEDFITWREQFWLAVCEHFGVEATG
EESSIRQYELVVHTDIDAAKVYMGEMGRLKSYENQKPPFDAKNPFLAAVTTNRKLNQGTE
RHLMHLELDISDSKIRYESGDHVAVYPANDSALVNQLGKILGADLDVVM SLNNLDEESNK
KHPFPCPTS YRTALTYLDITNPPRTNVL YELAQYASEPSEQELLRKMASSSGEGKELYL
SWVVEARRHILAILQDCPSLRPPIDHLCCELLPRLQARYYSIASSSKVHPNSVHICAVVVE
YETKAGRINKGVATNWLRAKEPVGENGGRALVPMFVRKSQFRLPFKATTPVIMVGP GTGV
APFIGFIQERAWLRQQGKEVGETLLYYGCRRSDEDYLYREELAQFH RDGALTQLNVAFSR
EQSHKVYVQHLLKQDREHLWKIEGGAHYVCGDARNMARDVQNTFYDIVAELGAMEHAQ
AVDYIKKLMTKGRYSLDVWS

Gene Alias CPR, CYPOR, DKFZp686G04235, FLJ26468, P450R

Application notes **WB**
Antibody dilution: 1:1000 ~ 1:2000. Specific band of ~77.10 kDa using POR transfected 293T lysate.

Western Blotting (Transfected lysate)



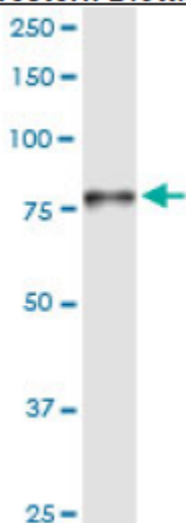
Western Blot analysis of POR expression in transfected 293T cell line by POR rabbit polyclonal antibody.

Lane 1: POR transfected lysate(77.10 kDa).

Lane 2: Non-transfected lysate.

Antibody dilution: 1:1000. Western Blot analysis of POR expression in human liver (Predicted Mw: 76.6900 kDa).

Western Blotting (Tissue lysate)



POR rabbit polyclonal antibody. Western Blot analysis of POR expression in human liver.

Storage

For continuous use, store at 2-8°C for one-two days. For extended storage, store in -20°C freezer. Working dilution samples should be discarded if not used within 12 hours.

Production

Cosmo Bio Co., Ltd., Japan

For research use only. Not for clinical diagnosis.



COSMO BIO Co., LTD.

Inspiration for Life Science

TOYO 2CHOME, KOTO-KU, TOKYO, 135-0016, JAPAN

URL: <http://www.cosmobio.co.jp>

e-mail: export@cosmobio.co.jp

[Outside Japan] Phone : +81-3-5632-9617

[国内連絡先] Phone : +81-3-5632-9610

FAX : +81-3-5632-9618

FAX : +81-3-5632-9619