



POLYCLONAL ANTIBODY

For research use only. Not for clinical diagnosis.

Catalog No. CZA-004

Anti CYP4X1

Product type	Primary antibodies
Immunogen	CYP4X1 (NP_828847.1, 1 a.a. ~ 509 a.a) full-length human protein.
Form	Liquid Protein G purified
Quantity	100ug
Buffer	PBS
Preservative	ProClin (15ppm)
Specificity	Human
Host	Rabbit

Immunogen Sequence
 MEFSWLETRWARPFYLA FVFCLALGLLQAIKLYLRRQRLRLRDLRPFAPPTHWFLGHQKF
 IQDDNMEKLEEEIEKYPRAFPFWIGPFQAFFCIYDPDYAKTLLSRTDPKSQYLQKFSPPL
 LGKGLAALDGPKW FQHRRLLTPGFHFNILKAYIEVMAHSV KMMLDKWEKICSTQDTSVEV
 YEHINSMSLDIIMKCAFSKETNCQTNSTHDPYAKAIFELSKIIFHRLYSLLYHSDIIFKL
 SPQGYRFQKLSRVLNQYTDTIQERKKS LQAGVKQDNTPKRKYQDFLDIVLSAKDESGSS
 FSDIDVHSEVSTFLLAGHDTLAASISWILYCLALNPEHQERCREEVRGILGDGSSITWDQ
 LGEMSYTTMCIKETCRLIPAVPSISRDL SKPLTFPDGCTLPAGITVVLSIWGLHHNPAVW
 KNPKVFDPLRF SQENS DQRHPYAYLPFSAGSRNCIGQEFAMIELKV TIALILLHFRVTPD
 PTRPLTFPNHFILKPKNGMYLHLK LSEC

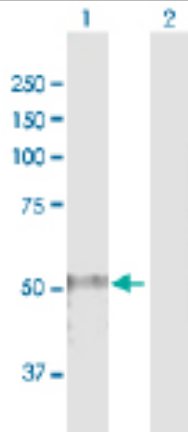
MGC40051

Application notes

WB

Antibody dilution: 1:1000 ~ 1:2000. Specific band of ~58.90 kDa using CYP4X1 transfected 293T lysate.

Western Blotting (Transfected lysate)

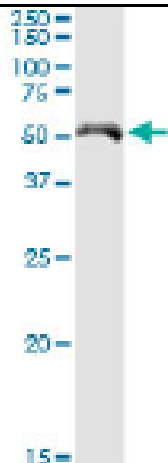


Western Blot analysis of CYP4X1 expression in transfected 293T cell line by CYP4X1 rabbit polyclonal antibody.

Lane 1: CYP4X1 transfected lysate(58.90 KDa).
 Lane 2: Non-transfected lysate.

Antibody dilution: 1:1000. Western Blot analysis of CYP4X1 expression in human kidney (Predicted Mw: 58.3500 kDa).

Western Blotting (Tissue lysate)



CYP4X1 rabbit polyclonal antibody. Western Blot analysis of CYP4X1 expression in human kidney.

Storage

For continuous use, store at 2-8°C for one-two days. For extended storage, store in -20°C freezer. Working dilution samples should be discarded if not used within 12 hours.

Production

Cosmo Bio Co., Ltd., Japan

For research use only. Not for clinical diagnosis.



COSMO BIO Co., LTD.

Inspiration for Life Science

TOYO 2CHOME, KOTO-KU, TOKYO, 135-0016, JAPAN

URL: <http://www.cosmobio.co.jp>

e-mail: export@cosmobio.co.jp

[Outside Japan] Phone : +81-3-5632-9617

[国内連絡先] Phone : +81-3-5632-9610

FAX : +81-3-5632-9618

FAX : +81-3-5632-9619