



**POLYCLONAL ANTIBODY**

*For research use only. Not for clinical diagnosis.*

**Catalog No. CZA-002**

# Anti KIAA1199

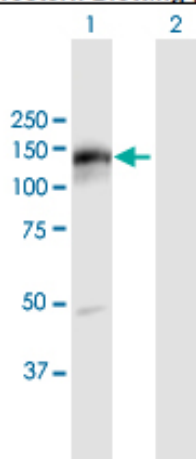
|                     |  |
|---------------------|--|
| <b>Product type</b> | Primary antibodies   |
| <b>Immunogen</b>    | KIAA1199 (AAH20256.1, 1 a.a. ~ 992 a.a) full-length human protein. |
| <b>Form</b>         | Liquid<br>Protein G purified                                       |
| <b>Quantity</b>     | 100ug  |
| <b>Buffer</b>       | PBS  |
| <b>Preservative</b> | ProClin (15ppm)  |
| <b>Specificity</b>  | Human  |
| <b>Host</b>         | Rabbit   |

|                           |  |
|---------------------------|--|
| <b>Immunogen Sequence</b> | MGAAGRQDFLFKAMLTISWLTLCFPGATSTVAAGCPDQSPQLPWNPGHDQDHHVHIGQ<br>GKTLTLLTSSATVYSIHISEGGKLVKDHDEPIVLRTRHILIDNGGELHAGSALCPFQGNF<br>TIILYGRADEGIQPDYGLKYIGVGKGALELHGQKLSWTFLNKTLPGGMAEGGYFF<br>ERSWGHARGVIVHVIDPKSGTVIHSDFDTYRSKKEERLVQYLNAVDPGRILSVAVNDEG<br>SRNLDDMARKAMTKLGSKHFLHLGFRHPWSFLT VKGNPSSSVEDHIEYHGHRGSAAARVF<br>KLFQTEHGEYFNVLSSEWVQDVEWTEWFDHDKVSQTKGGEKISDLWKAHPGKICNRPID<br>IQATTMDGVNLSTEVVYKKGQDYRFACYDRGRACRSYRVRFLCGKPVPRPKLTVTIDTNVN<br>STILNLEDNVQSWKPGDTLVIASTDYSMYQAEFQVLPSCRSCAPNQVKVAGKPMYHIGE<br>EIDGVDMRAEVGLLSRNIIVMGEMEDKCYPYRNHICNFFDFDTFGGHKIFALGFKAAHLE<br>GTELKHMGGQLVGGYPIHFHLAGDVDERGGYDPPTYIRDLSIHHTFSRCVTVHGSNGLLI<br>KDVVGYNSLGHCFTEDEGPEERNTFDHCLGLLVKSGTLLPSDRDSKMCKMITEDSYPGYI<br>PKPRQDCNAVSTFWMANPNNNLINCAAAGSEETGFWFIFHHVPTGPSVGMYSYSPGYSEHIP<br>LGKFYNNRAHSNYRAGMIIDNGVKTTEASAKDKRPFLSIISARYSPHQDADPLKPREPAI<br>IRHFIAYKNQDHGAWLRGGDVWLDSCRFA DNGIGLTLASGGTFPYDDGSKQEIKNSLFVG<br>ESGNVGTMMDNRIWGPGLDHSGR TLP I GQNFPIRGIQLYDGPINIQNCTFRKFVALEG<br>RHTSALAFRLNNAWQSCPHNNVTGIAFEDVPITSRVFFGEPGPWFNQLDMDGDKTSVFHD<br>VDGSVSEYPGSYLTKNDKWHSLSKAAASGPSG |
|---------------------------|--|

**Gene Alias** TMEM2L

**Application notes** **WB**  
Antibody dilution: 1:1000 ~ 1:2000. Specific band of ~110.40 kDa using KIAA1199 transfected 293T lysate

### Western Blotting (Transfected lysate)



Western Blot analysis of KIAA1199 expression in transfected 293T cell line by KIAA1199 rabbit polyclonal antibody.

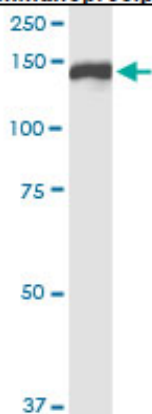
Lane 1: KIAA1199 transfected lysate(110.40 KDa).

Lane 2: Non-transfected lysate.

### IP

Antibody dilution 1:15 ~ 1:60 for immunoprecipitation of KIAA1199 transfected lysate.

#### Immunoprecipitation



Immunoprecipitation of KIAA1199 transfected lysate using KIAA1199 rabbit polyclonal antibody and Protein A Magnetic Bead, and immunoblotted with KIAA1199 purified mouse polyclonal antibody.

### Storage

For continuous use, store at 2-8°C for one-two days. For extended storage, store in -20°C freezer. Working dilution samples should be discarded if not used within 12 hours.

### Production

Cosmo Bio Co., Ltd., Japan

*For research use only. Not for clinical diagnosis.*



**COSMO BIO Co., LTD.**

Inspiration for Life Science

TOYO 2CHOME, KOTO-KU, TOKYO, 135-0016, JAPAN

URL: <http://www.cosmobio.co.jp>

e-mail: [export@cosmobio.co.jp](mailto:export@cosmobio.co.jp)

[Outside Japan] Phone : +81-3-5632-9617

[国内連絡先] Phone : +81-3-5632-9610

FAX : +81-3-5632-9618

FAX : +81-3-5632-9619