



POLYCLONAL ANTIBODY

For research use only. Not for clinical diagnosis.

Catalog No. CZA-001

Anti ADPORA2

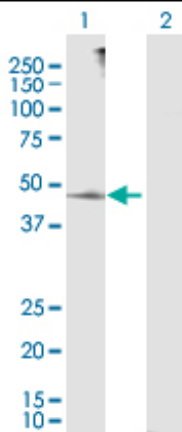
Product type	Primary antibodies
Immunogen	ADIPOR2 (NP_078827.2, 1 a.a. ~ 386 a.a) full-length human protein.
Form	Liquid Protein G purified
Quantity	100ug
Buffer	PBS
Preservative	ProClin (15ppm)
Specificity	Human
Host	Rabbit

Immunogen Sequence
MNEPTENRLGCSRTPEPDIRLRKQHLDGTRRGDNDSHQGDLEPILEASVLSSHKKSSSE
EHEYSDEAPQEDEGFMGMSPLLQAHAMEKMEEFVCKVWEGRWVIPHDLVLPDWLKDNDL
LLHGHRPPMPSFRACFKSIFRIHTETGNIWTHLLGCVFFLCLGIFYMFRPNISFVAPLQE
KVVFGFLFLGAILCLSFSWLFHTVYCHSEGVSRFLSKLDYSGIALLIMGSFVPWLYYSFY
CNPQPCFIYLIVICVLGIAAIVSQWDMFATPQYRGVVRAGVFLGLGLSGIIPTLHYVISE
GFLKAATIGQIGWLMLMASLYITGAALYAARIPERFFPGKCDIWFHSHQLFHIFVVAGAF
VHFHGVSNLQEFRFMIGGGCSEEDAL

Gene Alias ACDCR2, FLJ21432, MGC4640, PAQR2

Application notes **WB**
Antibody dilution: 1:1000 ~ 1:2000. Specific band of ~43.90 kDa using ADIPOR2 transfected 293T lysate.

Western Blotting (Transfected lysate)



Western Blot analysis of ADIPOR2 expression in transfected 293T cell line by ADIPOR2 rabbit polyclonal antibody.

Lane 1: ADIPOR2 transfected lysate(43.90 KDa).

Lane 2: Non-transfected lysate.

Storage For continuous use, store at 2-8°C for one-two days. For extended storage, store in -20°C freezer. Working dilution samples should be discarded if not used within 12 hours.

Production Cosmo Bio Co., Ltd., Japan

For research use only, Not for diagnostic use.



COSMO BIO Co., LTD.

【JAPAN】
TOYO EKIMAE BLDG. 2-20, TOYO 2-CHOME,
KOTO-KU, TOKYO 135-0016, JAPAN
Phone: +81-3-5632-9610
FAX: +81-3-5632-9619
URL: <https://www.cosmobio.co.jp/>



COSMO BIO USA

【Outside Japan】
2792 Loker Ave West, Suite 101
Carlsbad, CA 92010, USA
email: info@cosmobioussa.com
Phone/FAX: (+1) 760-431-4600
URL: www.cosmobioussa.com