



POLYCLONAL ANTIBODY

For research use only. Not for clinical diagnosis.

Catalog No. CZA-001

Anti ADPORA2

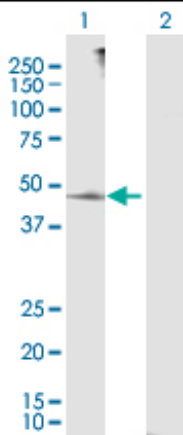
Product type	Primary antibodies
Immunogen	ADIPORA2 (NP_078827.2, 1 a.a. ~ 386 a.a) full-length human protein.
Form	Liquid Protein G purified
Quantity	100ug
Buffer	PBS
Preservative	ProClin (15ppm)
Specificity	Human
Host	Rabbit

Immunogen Sequence
MNEPTENRLGCSRTPEPDIRLRKGHQLDGTTRRGDNDSHQGDLEPILEASVLSSHKKSSSE
EHEYSDEAPQEDEGFMGMSPLLQAHAMEKMEEFVCKVWEGRWRVIPHDLVLPDWLKDNDNF
LLHGHHRPPMPSFRACFKSIFRIHTETGNIWTHLLGCVFFLCLGIFYMFRPNISFVAPLQE
KVVFGFLFFLGAILCLSFSWLFHTVYCHSEGSRLFSKLDYSGIALLIMGSFVPWLYYSFY
CNPQPCFIYLIVICVLGIAAIVSQWDMFATPQYRGVRAGVFLGLGLSGIIPTLHYVISE
GFLKAATIGQIGWLMLMASLYITGAALYAARIPERFFPGKCDIWFHSHQLFHIFVVAGAF
VHFHGVSNLQEFRFMIGGGCSEEDAL

Gene Alias ACDCR2, FLJ21432, MGC4640, PAQR2

Application notes **WB**
Antibody dilution: 1:1000 ~ 1:2000. Specific band of ~43.90 kDa using ADIPORA2 transfected 293T lysate.

Western Blotting (Transfected lysate)



Western Blot analysis of ADIPORA2 expression in transfected 293T cell line by ADIPORA2 rabbit polyclonal antibody.

Lane 1: ADIPORA2 transfected lysate(43.90 KDa).
Lane 2: Non-transfected lysate.

Storage For continuous use, store at 2-8°C for one-two days. For extended storage, store in -20°C freezer. Working dilution samples should be discarded if not used within 12 hours.
Production Cosmo Bio Co., Ltd., Japan

For research use only. Not for clinical diagnosis.



COSMO BIO Co., LTD.

Inspiration for Life Science

TOYO 2CHOME, KOTO-KU, TOKYO, 135-0016, JAPAN

URL: <http://www.cosmobio.co.jp>

e-mail: export@cosmobio.co.jp

[Outside Japan] Phone : +81-3-5632-9617

[国内連絡先] Phone : +81-3-5632-9610

FAX : +81-3-5632-9618

FAX : +81-3-5632-9619