



COSMO BIO CO., LTD.  
Inspiration for Life Science

## Cosmo Bio Co., Ltd

TOYO EKIMAE BLDG, 2-20, TOYO 2CHOME,  
KOTO-KU, TOKYO 135-0016, JAPAN  
TEL : +81-3-5632-9617  
FAX : +81-3-5632-9618  
URL : <http://www.cosmobio.co.jp/>  
e-mail : [export@cosmobio.co.jp](mailto:export@cosmobio.co.jp)

国内連絡先

TEL : 03-5632-9610  
FAX : 03-5632-9619

## Catalog No. CBX00563

Mouse monoclonal antibody

Anti-Human **RELA**

### ■ Formulation

Mouse monoclonal anti-human **RELA** antibody  
in PBS (3.0 mM KCl, 1.5 mM  $\text{KH}_2\text{PO}_4$ ,  
140 mM NaCl, 8.0 mM  $\text{Na}_2\text{HPO}_4$  (pH 7.4))  
containing 1% bovine serum albumin (BSA)  
and 0.05% sodium azide ( $\text{NaN}_3$ ).

### ■ Antibody concentration

100  $\mu\text{g}/\text{ml}$  (1.0 ml)

### ■ Storage

Store at 2-8°C for up to one year.  
We recommend storing at -20°C for long-term storage.  
Avoid repeat freezing and thawing cycles.

### ■ Preparation

This antibody was purified using protein G column  
chromatography from culture supernatant of hybridoma  
cultured in a medium containing bovine IgG-depleted  
(approximately 95%) fetal bovine serum.

### ■ Sterility

Filtered through a 0.22  $\mu\text{m}$  membrane.

### ■ Applications

WB, IC, Dot Blot

### ■ Disposal

This antibody solution contains sodium azide ( $\text{NaN}_3$ )  
as a preservative. There is a potential hazard that  
 $\text{NaN}_3$  reacts with copper or lead to produce an expl-  
osive compound. For safe disposal, the vial has to  
be washed thoroughly with water.

### ■ Safety warnings and precautions

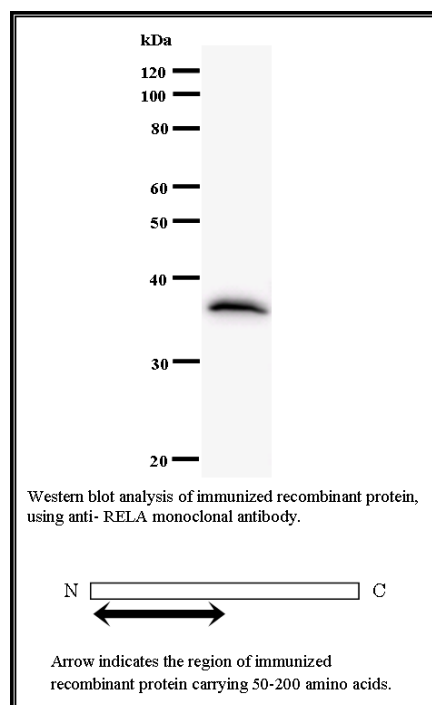
Caution must be taken to avoid contact with skin or eyes. In such a case, rinse thoroughly at once with water.  
Do not ingest, inhale, or swallow. Seek medical attention immediately.  
Wear appropriate protective clothing such as laboratory overalls, safety glasses and gloves.  
It is strongly advised that this product should be handled by people who have been well trained in  
laboratory techniques and that it is handled with care pursuant to the principles of good laboratory practice.  
All chemicals are deemed potentially harmful.  
The vial is prone to fall over. Use caution, especially when the lid is off.

Lot No. **340C1a-1**

Clone No. **340C1a**

Antibody class : **IgG1**

Immunogen : Recombinant



FOR RESEARCH USE ONLY, NOT FOR USE IN DIAGNOSTIC PROCEDURES.

manufactured by BMR



Catalog No. CBX00563

Mouse monoclonal antibody

Anti-Human RELA

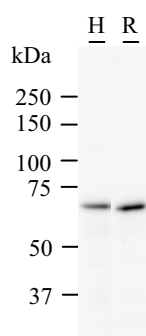
### ■ Background

NFKB1 (MIM 164011) or NFKB2 (MIM 164012) is bound to REL (MIM 164910), RELA, or RELB (MIM 604758) to form the NFKB complex. The p50 (NFKB1)/p65 (RELA) heterodimer is the most abundant form of NFKB. The NFKB complex is inhibited by I-kappa-B proteins (NFKBIA, MIM 164008 or NFKBIB, MIM 604495), which inactivate NFKB by trapping it in the cytoplasm. Phosphorylation of serine residues on the I-kappa-B proteins by kinases (IKBKA, MIM 600664, or IKBKB, MIM 603258) marks them for destruction via the ubiquitination pathway, thereby allowing activation of the NFKB complex. Activated NFKB complex translocates into the nucleus and binds DNA at kappa-B-binding motifs such as 5-prime GGGRNNYYCC 3-prime or 5-prime HGGARNYYCC 3-prime (where H is A, C, or T; R is an A or G purine; and Y is a C or T pyrimidine).[supplied by OMIM] [NCBI Entrez Gene Summary]

### ■ Recommended condition

WB: 0.2-2 µg/ml IC: 2-100 µg/ml

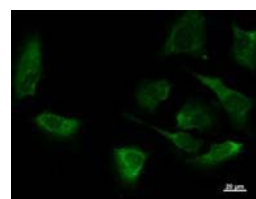
### ■ Application



Detection of RELA by Western blot.

Samples: Whole cell lysate from human HeLa (H, 25 µg) and rat F2408 (R, 25 µg) cells. [Lot No. 340C1a-1]

Predicted molecular weight: 60 kDa



Immunostaining analysis in HeLa cells. HeLa cells were fixed with 4% paraformaldehyde and permeabilized with 0.1% Triton X-100 in PBS. The cells were immunostained with anti-RELA mAb. [Lot No. 340C1a-1]