

**manufactured by BMR**



Catalog No. **CBX00534**

**Mouse monoclonal antibody**

**Anti-Human SCYE1**

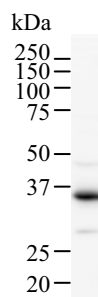
### ■ Background

The protein encoded by this gene is a cytokine that is specifically induced by apoptosis. The release of this cytokine renders the tumor-associated vasculature sensitive to tumor necrosis factor. The precursor of SCYE1 (pro-SCYE1) is identical to the p43 subunit, which is associated with the multi-tRNA synthetase complex. Therefore, pro-SCYE1 may function in binding RNA as part of the tRNA synthetase complex in normal cells and in stimulating inflammatory responses after proteolytic cleavage in tumor cells. [NCBI Entrez Gene Summary]

### ■ Recommended condition

WB: 0.2-2 µg/ml

### ■ Application



Detection of human SCYE1 by Western blot.  
Samples: Whole cell lysate (25 µg) from HeLa cells. [Lot No. 284D2a-1]

Predicted molecular weight: 34 kDa