



COSMO BIO CO., LTD.  
Inspiration for Life Science

## Cosmo Bio Co., Ltd

TOYO EKIMAE BLDG, 2-20, TOYO 2CHOME,  
KOTO-KU, TOKYO 135-0016, JAPAN  
TEL : +81-3-5632-9617  
FAX : +81-3-5632-9618  
URL : <http://www.cosmobio.co.jp/>  
e-mail : [export@cosmobio.co.jp](mailto:export@cosmobio.co.jp)

国内連絡先

TEL : 03-5632-9610  
FAX : 03-5632-9619

## Catalog No. CBX00139

Mouse monoclonal antibody

Anti-Human BTAF1

### ■ Formulation

Mouse monoclonal anti-human **BTAF1** antibody  
in PBS (3.0 mM KCl, 1.5 mM  $\text{KH}_2\text{PO}_4$ ,  
140 mM NaCl, 8.0 mM  $\text{Na}_2\text{HPO}_4$  (pH 7.4))  
containing 1% bovine serum albumin (BSA)  
and 0.05% sodium azide ( $\text{NaN}_3$ ).

### ■ Antibody concentration

100  $\mu\text{g/ml}$

### ■ Storage

Store at 2-8°C for up to one year.  
We recommend storing at -20°C for long-term storage.  
Avoid repeat freezing and thawing cycles.

### ■ Preparation

This antibody was purified using protein G column  
chromatography from culture supernatant of hybridoma  
cultured in a medium containing bovine IgG-depleted  
(approximately 95%) fetal bovine serum.

### ■ Sterility

0.22  $\mu\text{m}$  membrane.

### ■ Applications

WB, IP, IC, Dot Blot

### ■ Disposal

This antibody solution contains sodium azide ( $\text{NaN}_3$ )  
as a preservative. There is a potential hazard that  
 $\text{NaN}_3$  reacts with copper or lead to produce an expl-  
osive compound. For safe disposal, the vial has to  
be washed thoroughly with water.

### ■ Safety warnings and precautions

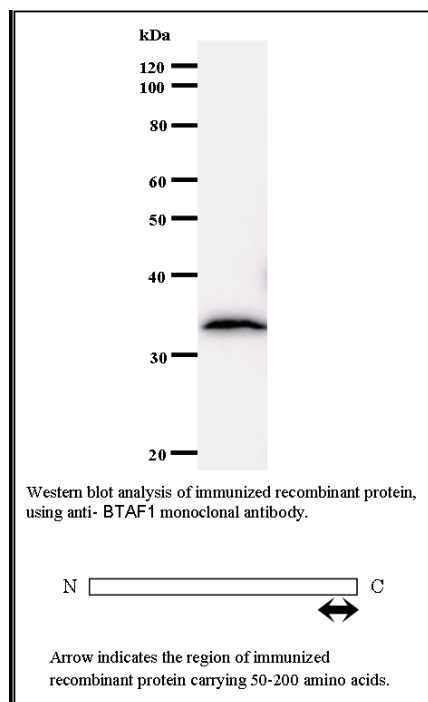
Caution must be taken to avoid contact with skin or eyes. In such a case, rinse thoroughly at once with water.  
Do not ingest, inhale, or swallow. Seek medical attention immediately.  
Wear appropriate protective clothing such as laboratory overalls, safety glasses and gloves.  
It is strongly advised that this product should be handled by people who have been well trained in  
laboratory techniques and that it is handled with care pursuant to the principles of good laboratory practice.  
All chemicals are deemed potentially harmful.  
The vial is prone to fall over. Use caution, especially when the lid is off.

Lot No. **BT3D61-2**

Clone No. **BT3D61**

Antibody class : **IgG1**

Immunogen : Recombinant



FOR RESEARCH USE ONLY, NOT FOR USE IN DIAGNOSTIC PROCEDURES.

manufactured by BMR



Catalog No. CBX00139

Mouse monoclonal antibody

Anti-Human BTAF1

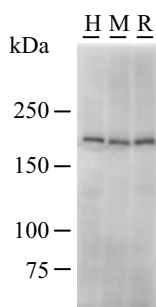
### Background

Initiation of transcription by RNA polymerase II requires the assistance of TATA box-binding protein (TBP; MIM 600075) and TBP-associated factors, or TAFs (e.g., TAF2B; MIM 604912), in 2 distinct complexes, TFIID and B-TFIID. The TFIID complex is composed of TBP and more than 8 TAFs. However, the majority of TBP is present in the B-TFIID complex, which is composed of TBP and TAFII170, also called TAF172, and has DNA-dependent ATPase activity.[supplied by OMIM] [NCBI Entrez Gene Summary]

### Recommended condition

WB: 0.2-2 µg/ml IP: 100-500 µg/sample FC: 0.5-2 µg/sample ICC: 2-100 µg/ml

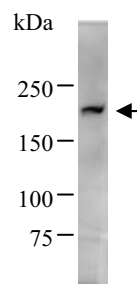
### Application



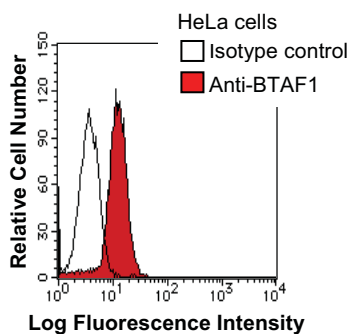
Detection of BTAF1 by Western blot.

Samples: Whole cell lysate from human HeLa (H, 50 µg), mouse NIH3T3 (M, 50 µg) and rat F2408 (R, 50 µg) cells. [Lot No. BTA3D61-1]

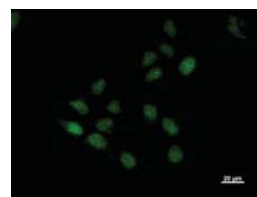
Predicted molecular weight: 206 kDa



Immunoprecipitation: RIPA lysate of HeLa cells was incubated with anti-BTAF1 mAb. [Lot No. BTA3D61-1]



HeLa cells were fixed in 2% paraformaldehyde/PBS and then permeabilized in 90% methanol. Cells were stained with anti-BTAF1 mAb (shaded) or isotype control (unshaded) followed by Alexa Fluor® 488-conjugated goat anti-mouse IgG. [Lot No. BTA3D61-1]



Immunostaining analysis in HeLa cells. HeLa cells were fixed with 4% paraformaldehyde and permeabilized with 0.1% Triton X-100 in PBS. The cells were immunostained with anti-BTAF1 mAb. [Lot No. BTA3D61-1]