
Product Manual

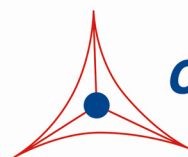
Rho Activation Assay Kit

Catalog Number

STA-403

20 assays

FOR RESEARCH USE ONLY
Not for use in diagnostic procedures



CELL BIOLABS, INC.
Creating Solutions for Life Science Research

Introduction

Small GTP-binding proteins (or GTPases) are a family of proteins that serve as molecular regulators in signaling transduction pathways. Rho, a 21 kDa protein, regulating a variety of biological response pathways that include cell growth, cell transformation and tumor invasion. Like other small GTPases, Rho regulates molecular events by cycling between an inactive GDP-bound form and an active GTP-bound form. In its active (GTP-bound) state, Rho binds specifically to the Rho-binding domain (RBD) of Rhotekin to control downstream signaling cascades.

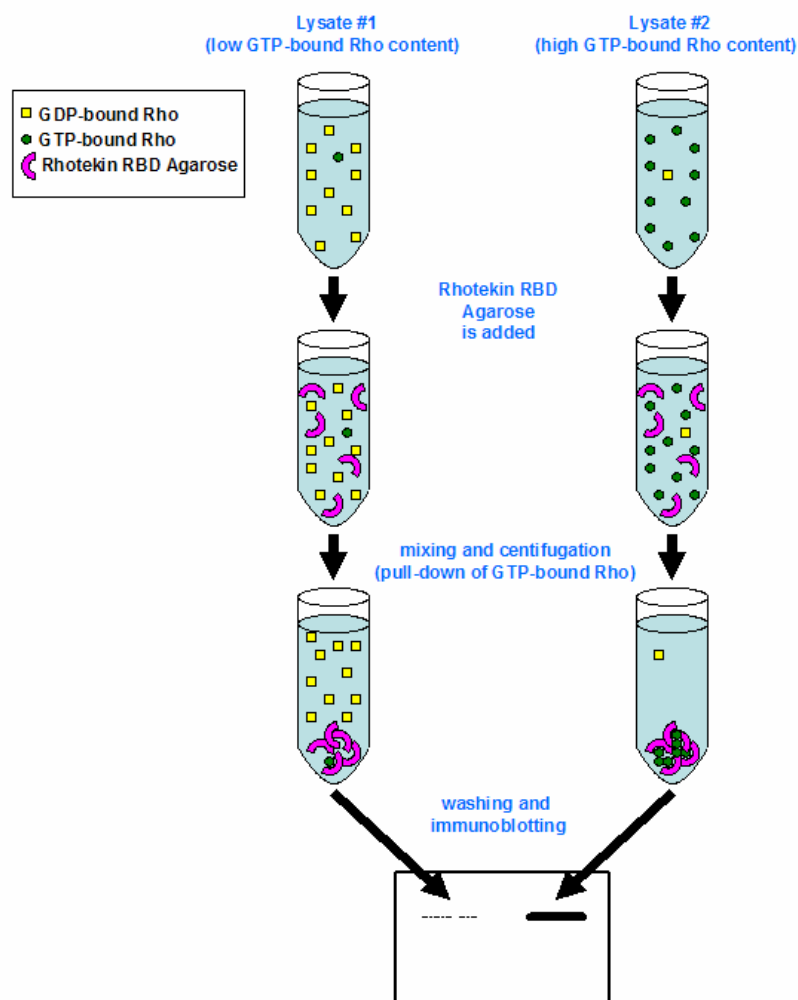
Cell Biolabs' Rho Activation Assay Kit utilizes Rhotekin RBD Agarose beads to selectively isolate and pull-down the active form of Rho from purified samples or endogenous lysates. Subsequently, the precipitated GTP-Rho is detected by western blot analysis using an anti-Rho antibody.

Cell Biolabs' Rho Activation Assay Kit provides a simple and fast tool to monitor the activation of Rho. The kit includes easily identifiable Rhotekin RBD Agarose beads (see Figure 2), pink in color, and a GTPase Immunoblot Positive Control for quick Rho identification. Each kit provides sufficient quantities to perform 20 assays.



Figure 1: Rhotekin RBD Agarose beads, in color, are easy to visualize, minimizing potential loss during washes and aspirations.

Assay Principle



Related Products

1. STA-452: GFP-RhoA Expression Vector Set
2. STA-456: RhoA Expression Vector Set
3. STA-460: Exoenzyme C3 (Rho Inhibitor) Expression Vector
4. STA-400: Ras Activation Assay Kit
5. STA-401: Rac Activation Assay Kit
6. STA-402: Cdc42 Activation Assay Kit
7. STA-404: Rac/Cdc42 Activation Assay Combo Kit
8. STA-405: Rho/Rac/Cdc42 Activation Assay Combo Kit
9. STA-412: Rhotekin PBD Agarose Beads

Kit Components

1. Rhotekin RBD Agarose (Part No. 240301): One vial – 800 μ L of 50% slurry, 400 μ g Rhotekin RBD in PBS containing 50% glycerol.
Note: Agarose bead appears pink in color for easy identification, washing, and aspiration.
2. 100X GTP γ S (Part No. 240103): One vial – 50 μ L of 10 mM GTP γ S dissolved in sterile water.
3. 100X GDP (Part No. 240104): One vial – 50 μ L of 100 mM GDP dissolved in sterile water.
4. 5X Assay/Lysis Buffer (Part No. 240102): One bottle – 30 mL of 125 mM HEPES, pH 7.5, 750 mM NaCl, 5% NP-40, 50 mM MgCl₂, 5 mM EDTA, 10% Glycerol.
5. Anti-Rho, Mouse Monoclonal (Part No. 240302): One vial – 40 μ L in PBS, pH 7.4, 0.05% NaN₃, 0.1% BSA.
6. GTPase Immunoblot Positive Control (Part No. 240105): One vial – 100 μ L (provided ready-to-use in 1X reducing SDS-PAGE Sample Buffer, pre-boiled)

Materials Not Supplied

1. Stimulated and non-stimulated cell lysates
2. Rho activators
3. Protease inhibitors
4. 0.5 M EDTA in water
5. 1 M MgCl₂
6. 30°C incubator or water bath
7. 4°C tube rocker or shaker
8. 2X reducing SDS-PAGE sample buffer
9. Electrophoresis and immunoblotting systems
10. Immunoblotting wash buffer such as TBST (10 mM Tris-HCl, pH 7.4, 0.15 M NaCl, 0.05% Tween-20)
11. Immunoblotting blocking buffer (TBST containing 5% Non-fat Dry Milk)
12. PVDF or nitrocellulose membrane
13. Secondary Antibody
14. ECL Detection Reagents

Storage

Store all kit components at -20°C until their expiration dates. Avoid multiple freeze/thaw cycles.

Preparation of Reagents

- 1X Assay/Lysis Buffer: Mix the 5X Stock briefly and dilute to 1X in deionized water. Just prior to usage, add protease inhibitors such as 1 mM PMSF, 10 µg/mL leupeptin, and 10 µg/mL aprotinin.

Preparation of Samples

Note: It is advisable to use fresh cell lysates because GTP-Rho is quickly hydrolyzed to GDP-Rho; frozen lysates stored at -70 °C may be used. Performing steps at 4 °C or on ice may reduce hydrolysis. Avoid multiple freeze/thaw cycles of lysates.

I. Adherent Cells

1. Culture cells to approximately 80-90% confluence. Stimulate cells with Rho activator(s) as desired.
2. Aspirate the culture media and wash twice with ice-cold PBS.
3. Completely remove the final PBS wash and add ice-cold 1X Assay/Lysis Buffer to the cells (0.5 - 1 mL per 100 mm tissue culture plate).
4. Place the culture plates on ice for 10-20 minutes.
5. Detach the cells from the plates by scraping with a cell scraper.
6. Transfer the lysates to appropriate size tubes and place on ice.
7. If nuclear lysis occurs, the cell lysates may become very viscous and difficult to pipette. If this occurs, lysates can be passed through a 27½-gauge syringe needle 3-4 times to shear the genomic DNA.
8. Clear the lysates by centrifugation for 10 minutes (14,000 x g at 4 °C).
9. Collect the supernatant and store samples on ice for immediate use, or snap freeze and store at -70 °C for future use.
10. Proceed to GTPγS/GDP Loading for positive and negative controls, or Pull-Down Assay.

II. Suspension Cells

1. Culture cells and stimulate with Rho activator(s) as desired.
2. Perform a cell count, and then pellet the cells by centrifugation.
3. Aspirate the culture media and wash twice with ice-cold PBS.
4. Completely remove the final PBS wash and add ice-cold 1X Assay/Lysis Buffer to the cell pellet (0.5 – 1 mL per 1×10^7 cells).
5. Lyse the cells by repeated pipetting.
6. Transfer the lysates to appropriate size tubes and place on ice.

7. If nuclear lysis occurs, the cell lysates may become very viscous and difficult to pipette. If this occurs, lysates can be passed through a 27½-gauge syringe needle 3-4 times to shear the genomic DNA.
8. Clear the lysates by centrifugation for 10 minutes (14,000 x g at 4 °C).
9. Collect the supernatant and store samples on ice for immediate use, or snap freeze and store at -70 °C for future use.
10. Proceed to GTPγS/GDP Loading for positive and negative controls, or Pull-Down Assay.

Assay Protocol

I. GTPγS/GDP Loading (Positive and Negative Controls)

Note: Samples that will not be GTPγS/GDP loaded may be kept on ice during the loading of controls.

1. Aliquot 0.5 – 1 mL of each cell lysate to two microcentrifuge tubes.
Note: Typical protein content/sample is > 0.5 mg.
2. Adjust the volume of each sample to 1 mL with 1X Assay Lysis Buffer.
3. Add 20 μL of 0.5 M EDTA to each sample.
4. Add 10 μL of 100X GTPγS to one tube (positive control) and 10 μL of 100X GDP to the other tube (negative control). Mix and label each tube appropriately.
5. Incubate the tubes for 30 minutes at 30 °C with agitation.
6. Stop the loading by adding 65 μL of 1 M MgCl₂ to each tube. Mix and place tubes on ice.
7. Continue with Pull-Down assay.

II. Rho Pull-Down Assay

1. Aliquot 0.5 – 1 mL of cell lysate (treated with Rho activators or untreated) to a microcentrifuge tube.
2. Adjust the volume of each sample to 1 mL with 1X Assay Lysis Buffer.
3. Thoroughly resuspend the Rhotekin RBD Agarose bead slurry by vortexing or titrating.
4. Quickly add 40 μL of resuspended bead slurry to each tube (including GTPγS/GDP controls).
5. Incubate the tubes at 4 °C for 1 hour with gentle agitation.
6. Pellet the beads by centrifugation for 10 seconds at 14,000 x g.
7. Aspirate and discard the supernatant, making sure not to disturb/remove the bead pellet.
8. Wash the bead 3 times with 0.5 mL of 1X Assay Buffer, centrifuging and aspirating each time.
9. After the last wash, pellet the beads and carefully remove all the supernatant.
10. Resuspend the bead pellet in 40 μL of 2X reducing SDS-PAGE sample buffer.
11. Boil each sample for 5 minutes.
12. Centrifuge each sample for 10 seconds at 14,000 x g.

III. Electrophoresis and Transfer

1. Load 20 μ L/well of pull-down supernatant to a polyacrylamide gel. Also, it's recommended to include a pre-stained MW standard (as an indicator of a successful transfer in step 3).

Note: If desired, 10 μ L/well of GTPase Immunoblot Control (provided ready-to-use, pre-boiled) can be added as an immunoblot positive control.

2. Perform SDS-PAGE as per the manufacturer's instructions.
3. Transfer the gel proteins to a PVDF or nitrocellulose membrane as per the manufacturer's instructions.

IV. Immunoblotting and Detection (all steps are at room temperature, with agitation)

1. Following the electroblotting step, immerse the PVDF membrane in 100% Methanol for 15 seconds, and then allow it to dry at room temperature for 5 minutes.

Note: If Nitrocellulose is used instead of PVDF, this step should be skipped.

2. Block the membrane with 5% non-fat dry milk in TBST for 1 hr at room temperature with constant agitation.

Incubate the membrane with Anti-Rho Antibody, freshly diluted 1:1000 in 5% non-fat dry milk/TBST, for 1-2 hr at room temperature with constant agitation.

Note: To conserve antibody, incubations should be performed in a plastic bag.

3. Wash the blotted membrane three times with TBST, 5 minutes each time.
4. Incubate the membrane with a secondary antibody (e.g. Goat Anti-Mouse IgG, HRP-conjugate), freshly diluted in 5% non-fat dry milk/TBST, for 1 hr at room temperature with constant agitation.
5. Wash the blotted membrane three times with TBST, 5 minutes each time.
6. Use the detection method of your choice. We recommend enhanced chemiluminescence reagents from Pierce.

Example of Results

The following figure demonstrates typical results seen with Cell Biolabs Rac Activation Assay Kit. One should use the data below for reference only.

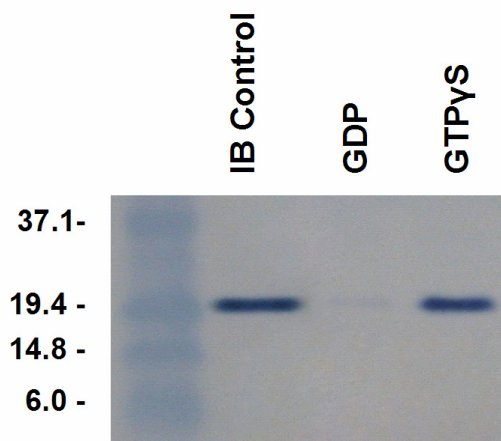


Figure 2: Rho Activation Assay. *Lane 1:* GTPase Immunoblot Positive Control. *Lane 2:* MDA-231 cell lysate loaded with GDP and incubated with Rhotekin RBD Agarose beads. *Lane 3:* MDA-231 cell lysate loaded with GTP γ S and incubated with Rhotekin RBD Agarose beads.

References

1. Ren X.D. and Schwartz M. A. (2000) *Methods Enzymol.* **325**, 264-72.

Warranty

These products are warranted to perform as described in their labeling and in Cell Biolabs literature when used in accordance with their instructions. THERE ARE NO WARRANTIES THAT EXTEND BEYOND THIS EXPRESSED WARRANTY AND CELL BIOLABS DISCLAIMS ANY IMPLIED WARRANTY OF MERCHANTABILITY OR WARRANTY OF FITNESS FOR PARTICULAR PURPOSE. CELL BIOLABS' sole obligation and purchaser's exclusive remedy for breach of this warranty shall be, at the option of CELL BIOLABS, to repair or replace the products. In no event shall CELL BIOLABS be liable for any proximate, incidental or consequential damages in connection with the products.

Contact Information

Cell Biolabs, Inc.
10225 Barnes Canyon Road, Suite A103
San Diego, CA 92121
Worldwide: +1 858 625-0769
USA Toll-Free: 1-888-CBL-0505
E-mail: tech@cellbiolabs.com
www.cellbiolabs.com

©2006-2007: Cell Biolabs, Inc. - All rights reserved. No part of these works may be reproduced in any form without permissions in writing.