



MONOCLONAL ANTIBODY

For research use only. Not for clinical diagnosis.

Catalog No. TSS-M02

Anti Calreticulin

BACKGROUND

The protein has long been basically studied as a calcium-related protein but it has recently been clarified that the protein is highly expressed in breast and urinary bladder carcinoma cells. It is a promising urinary tumor marker for urinary bladder carcinoma. The epitope that this antibody clone recognizes exists within 40 kDa from the N-terminal.

Product type	Monoclonal antibodies
Host	Mouse
Source	Purified Ascites
Form	Liquid
Volume	100 ul
Concentration	1 mg/ml
Specificity	human Calreticulin
Antigen	Recombinant human calreticulin protein (Antibody binds to N-terminal fragment of 40kDa)
Isotype	IgG2b Clone:1-10F

Application notes WB, ELISA

Recommended use

Recommended dilutions

Western blotting, 1-10 ug/ml

ELISA, 1-20 ug/ml

Optimal dilutions/concentrations should be determined by the end user.

Cross reactivity React with human. Not test for other species.

Storage Store at 4°C

- References**
- 1) Kageyama S, *et al.* (2004) Identification by proteomic analysis of calreticulin as a marker for bladder cancer and evaluation of the diagnostic accuracy of its detection in urine. *Clin Chem.* **50**: 857-866. PMID: 14764641
 - 2) Kageyama S *et al.* (2009) Urinary calreticulin in the diagnosis of bladder urothelial carcinoma. *Int J Urol.* **16**: 481-6. PMID: 19389084

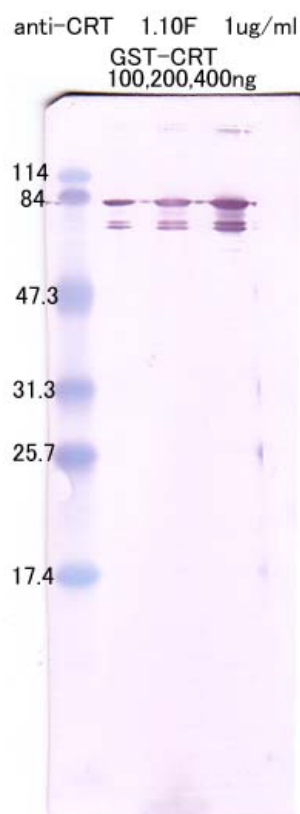


Fig.1 Western Blot analysis

Sample: Recombinant human CRT protein fused at the N-terminus to a GST sequence recognizes as a band at approximately 84kDa with anti calreticulin antibody at a concentration of 1ug/ml.

From the left 100 ng, 200 ng, 400 ng of GST-CRT.

For research use only. Not for clinical diagnosis.



COSMO BIO Co., LTD.

【JAPAN】

TOYO EKIMAE BLDG. 2-20, TOYO 2-CHOME,
KOTO-KU. TOKYO 135-0016, JAPAN
Phone: +81-3-5632-9610
FAX: +81-3-5632-9619
URL: <https://www.cosmobio.co.jp/>



COSMO BIO USA

【Outside Japan】

2792 Loker Ave West, Suite 101
Carlsbad, CA 92010, USA
email: info@cosmobiousa.com
Phone/FAX: (+1) 760-431-4600
URL: www.cosmobiousa.com