



## Anti TDP-43 C-terminus (405-414)

### BACKGROUND

TDP-43, a heterogeneous nuclear ribonucleoprotein, was identified as a component of ubiquitin-positive and tau-negative inclusions observed in cases of frontotemporal lobar degeneration (FTLD-U) and amyotrophic lateral sclerosis (ALS). Immunohistochemical analyses using antibodies generated against phospho- and non-phosphopeptides of human TDP-43 revealed that abnormally phosphorylated full-length TDP-43 (45 kDa), C-terminal fragments (~25 kDa) and smearing substances are deposited as intracellular inclusions in affected regions of FTLD-U and ALS cases.

These antibodies are powerful tools for biochemical and immunohistochemical analyses of neurodegenerative diseases and for evaluation of cellular or animal models of TDP-43 proteinopathy.

<b>Product type</b>	Primary antibody
<b>Immunogen</b>	CMDSKSSGWGM TDP-43 (405-414)
<b>Raised in</b>	Rabbit
<b>Myeloma</b>	-
<b>Clone number</b>	-
<b>Isotype</b>	-
<b>Source</b>	Serum
<b>Purification</b>	-
<b>Form</b>	Liquid containing 50% glycerol and 0.05% NaN <sub>3</sub> .
<b>Concentration</b>	-
<b>Volume</b>	100 µl
<b>Label</b>	Unlabeled
<b>Specificity</b>	TDP-43
<b>Cross reactivity</b>	Human, Rat
<b>Storage</b>	Store below -20°C. (below -70°C for prolonged storage). Aliquot to avoid cycles of freeze/thaw.

---

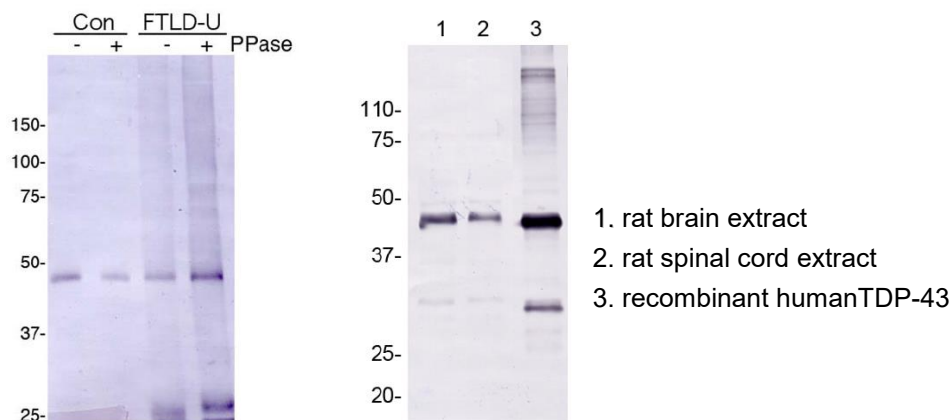
<b>Application notes</b>	<ul style="list-style-type: none"><li>• <b>Western blotting:</b> 1/1000 - 1/5000</li><li>• <b>Immunohistochemistry:</b> 1/1000 - 1/10000</li><li>• <b>ELISA:</b> 1/1000 - 1/5000</li></ul>
<b>Recommended dilutions</b>	

Other applications have not been tested.

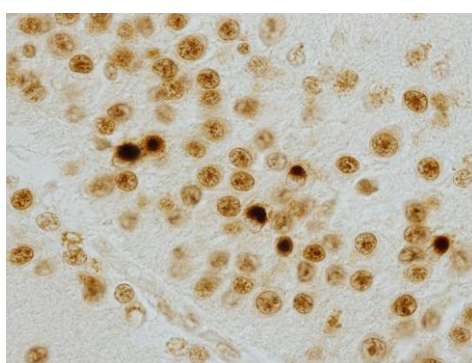
Optimal dilutions/concentrations should be determined by the end user.

<b>References</b>	1) Inukai Y, Nonaka T, Arai T, et al. Abnormal phosphorylation of Ser409/410 of TDP-43 in FTLD-U and ALS. FEBS Lett. 582, 2899-2904, 2008 PubMed: <a href="https://pubmed.ncbi.nlm.nih.gov/18656473/">18656473</a>
-------------------	--

## ANTIBODY CHARACTERIZATION



**Figure 1 Immunoblot analyses with pAb TDP43-C(405-414)**  
 Predicted molecular weight: Full-length TDP-43 at 43 kDa.



**Figure 2 Immunohistochemistry of Nuclei and NCIs in dentate gyrus of FTLD-U**

### RELATED PRODUCTS:

Product Name	Quantity	Maker	Cat#
Anti TDP-43, phospho Ser409/410 (clone:11-9) Monoclonal Antibody	50 uL	CAC	TIP-PTD-M01
Anti TDP-43, phospho Ser409 Polyclonal Antibody	100 uL	CAC	TIP-PTD-P03
Anti TDP-43, phospho Ser410 Polyclonal Antibody	100 uL	CAC	TIP-PTD-P04
Anti TDP-43, phospho Ser403/404 Polyclonal Antibody	100 uL	CAC	TIP-PTD-P05
Anti TDP-43 N-terminus(3-12) Polyclonal Antibody	100 uL	CAC	TIP-TD-P07

For research use only, Not for diagnostic use.



**COSMO BIO Co., LTD.**

【JAPAN】

TOYO EKIMAE BLDG. 2-20, TOYO 2-CHOME,  
 KOTO-KU, TOKYO 135-0016, JAPAN  
 Phone: +81-3-5632-9610  
 FAX: +81-3-5632-9619  
 URL: <https://www.cosmobio.co.jp/>



**COSMO BIO USA**

【Outside Japan】

2792 Loker Ave West, Suite 101  
 Carlsbad, CA 92010, USA  
 email: [info@cosmobioussa.com](mailto:info@cosmobioussa.com)  
 Phone/FAX: (+1) 760-431-4600  
 URL: [www.cosmobioussa.com](http://www.cosmobioussa.com)