



POLYCLONAL ANTIBODY

*For research use only, Not for diagnostic use***Catalog No. TIP-4RT-P01****Anti 4R-tau****BACKGROUND**

Tau is a microtubule-associated protein. In adult human brain, 6 tau isoforms are expressed, which are divided into two groups, 3-repeat (3R) and 4-repeat (4R) tau isoforms. Tau assembles into insoluble, filamentous, and hyperphosphorylated inclusions in many neurodegenerative diseases, and different tau isoforms are accumulated in the diseased brains, namely, 6 tau isoforms in AD, 3R tau isoforms in Pick's disease, and 4R tau isoforms in PSP and CBD. Therefore, isoform-specific tau antibodies are useful tools for immunohistochemical and biochemical studies of tau species in diseased brains. Tau deposited in AD is extensively deamidated at N279. This anti-4R specifically recognizes 4R tau isoforms regardless of deamidation and strongly stained tau in AD brain.

Product type	Primary antibody
Immunogen	synthetic N279D 4R-tau peptide (VQIIDKKLDLSNVQSKC)
Raised in	Rabbit
Myeloma	-
Clone number	-
Isotype	-
Source	Anti-serum
Purification	-
Form	Liquid containing 50% glycerol and 0.05% NaN ₃
Concentration	-
Volume	50 uL
Label	Unlabeled
Specificity	4R-tau isoforms
Cross reactivity	Human, Mouse, Rat
Storage	Store below -20°C. (below -70°C for prolonged storage). Aliquot to avoid cycles of freeze/thaw.

**Application notes
Recommended
dilutions**

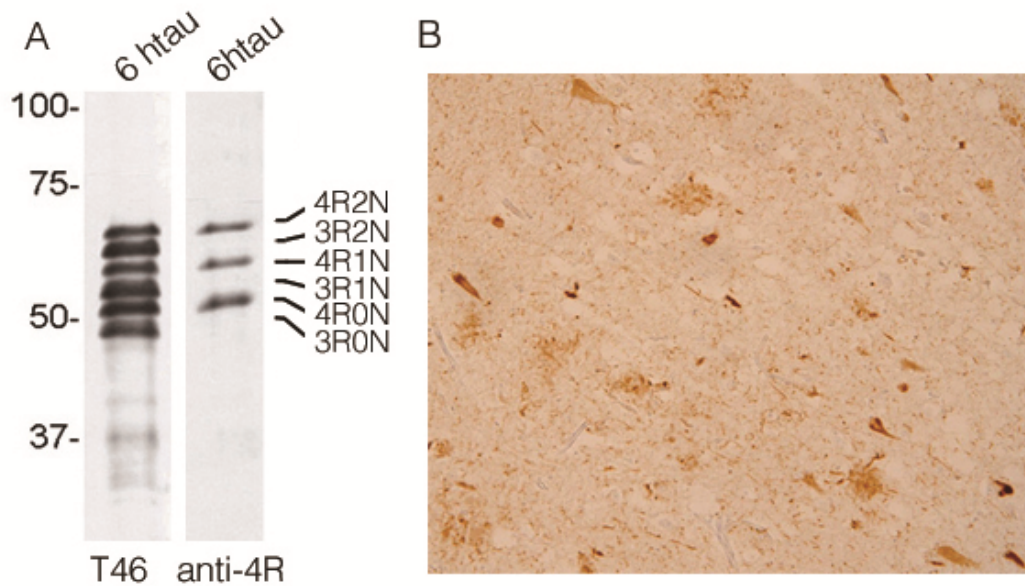
- Western blotting: 1/2000 – 1/5000 (Fig. 1)
 - Immunohistochemistry: 1:3000 – 1/20000 (Fig. 2)
- a higher dilution is recommended for immunohistochemistry.
Other applications have not been tested.

Optimal dilutions/concentrations should be determined by the end user.

References

- 1) Hasegawa M, Watanabe S, Kondo H, et al, 3R and 4R tau isoforms in paired helical filaments in Alzheimer's disease. *Acta Neuropathol.* 2013 Nov 9
- 2) Dan A, Takahashi M, Masuda-Suzukake M, et al. Extensive deamidation at asparagine residue 279 accounts for weak immunoreactivity of tau with RD4 antibody in Alzheimer's disease brain. *Acta Neuropathol*

ANTIBODY CHARACTERIZATION



(Fig1)

(Fig2)

Fig1: Immuno blot analysis for 6 kinds of tau isoforms (3-repeat and 4-repeat) with anti total tau (T46) and Anti 4R (TIP-4RT-P01).

Fig2: Immuno staining for paraffin embedded section of cerebral cortex prepared from AD brain (retrieved with proteinase K and formic acid)

For research use only, Not for diagnostic use.



COSMO BIO Co., LTD.

[JAPAN]
TOYO EKIMAE BLDG. 2-20, TOYO 2-CHOME,
KOTO-KU. TOKYO 135-0016, JAPAN
Phone: +81-3-5632-9610
FAX: 81-3-5632-9619
URL: <https://www.cosmobio.co.jp/>



COSMO BIO USA

[Outside Japan]
2792 Loker Ave West, Suite 101
Carlsbad, CA 92010, USA
email: info@cosmobioussa.com
Phone/FAX: (+1) 760-431-4600
URL: www.cosmobioussa.com