

MONOCLONAL ANTIBODY

For research use only, Not for diagnostic use.

Catalog No. SHI-EXO-M05

Anti EpCAM [Clone : BT-11C5]

BACKGROUND

EpCAM (epithelial cell adhesion molecule) is a glycoprotein that facilitates homo-typical adhesion of cells, and highly overexpressed in multiple types of carcinomas, has been found in pseudo-stratified, transitional and simple epithelia on the basolateral surfaces and has been identified as a cargo protein in exosomes¹.

MicroRNA profiling of circulating tumor exosomes collected by anti EpCAM antibody could potentially be used as surrogate diagnostic markers for biopsy profiling, extending its utility to screening asymptomatic populations². Recent discoveries of the presence of microRNAs, EpCAM and CD24 in ovarian tumor-derived exosomes have been highly promising alternatives for early detection of ovarian cancer^{1, 3, 4}.

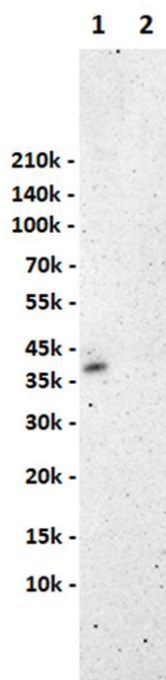
Product type	Primary antibody
Immunogen	Human EpCAM extracellular region -FLAG-rabbit Fc
Raised in	Mouse
Myeloma	-
Clone number	BT-11C5
Isotype	IgG1 κ
Source	Culture supernatant
Purification	Affinity purified by Protein G
Buffer	Phosphate buffered saline, 0.1%NaN ₃
Concentration	1 mg/mL
Volume	100 μ L
Label	Unlabeled
Specificity	Human EpCAM
Cross reactivity	Human. Other species are not tested.
Storage	Store below - 40°C Aliquot to avoid cycles of freeze/thaw.

Application notes	• Western blotting: 1/1000 (1 μ g/mL, non-reductive condition)
Recommended dilutions	• Immunocytochemistry: 1/200 (10 μ g/mL) * Experiment example : ZR-75-1 cell line

Other applications have not been tested.
Optimal dilutions/concentrations should be determined by the end user.

References	1) Beach A, et al., <i>J Ovarian Res.</i> 2014 Jan 25;7:14. PMID: 24460816
	2) Taylor DD, et al., <i>Gynecologic Oncology</i> , 2008 Jul;110(1):13-21. PMID: 18589210
	3) Runz S, et al., <i>Gynecologic Oncology</i> 2007 Dec;107(3):563-71. PMID: 17900673
	4) Rupp AK, et al., <i>Gynecologic Oncology</i> 2011 Aug;122(2):437-46. PMID: 21601258

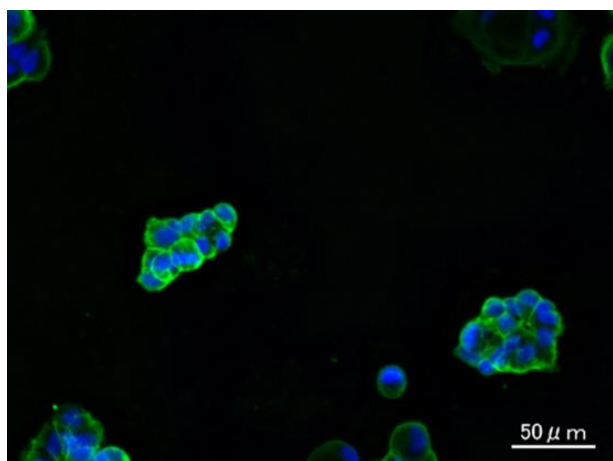
ANTIBODY CHARACTERIZATION



Sample: (non-reductive condition)
 ZR-75-1 cell secreted exosome
 Primary antibody:
 anti-EpCAM (BT-11C5) (1 ug/mL)
 Secondary antibody:
 Anti-IgG (H+L), Mouse (Goat) - HRP (1:4000)
 * SouthernBiotech, Cat.No.1031-05

Lane 1: non-reductive condition
 Lane 2: reduced condition

Fig.1 Western blot analysis of EpCAM in ZR-75-1 cell secreted exosome with anti-EpCAM (BT-11C5) antibody



Sample:
 ZR-75-1 cell line
 Primary antibody:
 anti-EpCAM (BT-11C5) (10 ug/mL)
 Secondary antibody:
 Anti-Mouse IgG-Alexa Fluor 488 (8 ug/mL)
 Nuclear staining:
 Hoechst 33342 (Green: antibody, Blue: stained nucleus)

Fig.2 Immunocytochemistry of ZR-75-1 cell line

RELATED PRODUCTS:

Product Name	Application	Quantity	Maker	Cat#
Anti CD9 (12A12) Monoclonal Antibody	WB / IP / ELISA / FC/ EM/ IF	100 uL	CAC	SHI-EXO-M01
Anti CD63 (8A12) Monoclonal Antibody	WB / IP / ELISA / FC/ EM/ IF	100 uL	CAC	SHI-EXO-M02
Anti CD81 (12C4) Monoclonal Antibody	WB / IP / ELISA / FC/ EM/ IF	100 uL	CAC	SHI-EXO-M03
Anti CD91 (B3-3E11) Monoclonal Antibody	WB / IC	100 uL	CAC	SHI-EXO-M04

For research use only, Not for diagnostic use.



COSMO BIO CO., LTD.

【JAPAN】

TOYO EKIMAE BLDG. 2-20, TOYO 2-CHOME,
 KOTO-KU. TOKYO 135-0016, JAPAN
 Phone: +81-3-5632-9610
 FAX: +81-3-5632-9619
 URL: <https://www.cosmobio.co.jp/>



COSMO BIO USA

【Outside Japan】

2792 Loker Ave West, Suite 101
 Carlsbad, CA 92010, USA
 email: info@cosmobiousa.com
 Phone/FAX: (+1) 760-431-4600
 URL: www.cosmobiousa.com