



MONOCLONAL ANTIBODY

For research use only, Not for diagnostic use.

Catalog No. SHI-EXO-M02

# Anti CD63 [ Clone : 8A12]

## BACKGROUND

CD63 (also known as LAMP-3, Melanoma-associated antigen ME491, TSPAN30, MLA1 and OMA81H) is a cell surface glycoprotein which belongs to the tetraspanin superfamily. CD63 is known to complex with integrins. CD63 is expressed on activated platelets, monocytes and macrophages, and is weakly expressed on granulocytes, T cell and B cells.

<b>Product type</b>	Primary antibody
<b>Immunogen</b>	Human CD63 (a.a. 104-202)
<b>Raised in</b>	Mouse
<b>Myeloma</b>	-
<b>Clone number</b>	8A12
<b>Isotype</b>	IgG2a
<b>Source</b>	Culture supernatant
<b>Purification</b>	Affinity purified by Protein G
<b>Buffer</b>	Phosphate buffered saline containing 0.1% NaN <sub>3</sub> as a preservative
<b>Concentration</b>	1 mg / mL
<b>Volume</b>	100 uL
<b>Label</b>	Unlabeled
<b>Specificity</b>	Human CD63
<b>Cross reactivity</b>	Human. Other species is not tested.
<b>Storage</b>	Store below - 40°C Aliquot to avoid cycles of freeze/thaw.

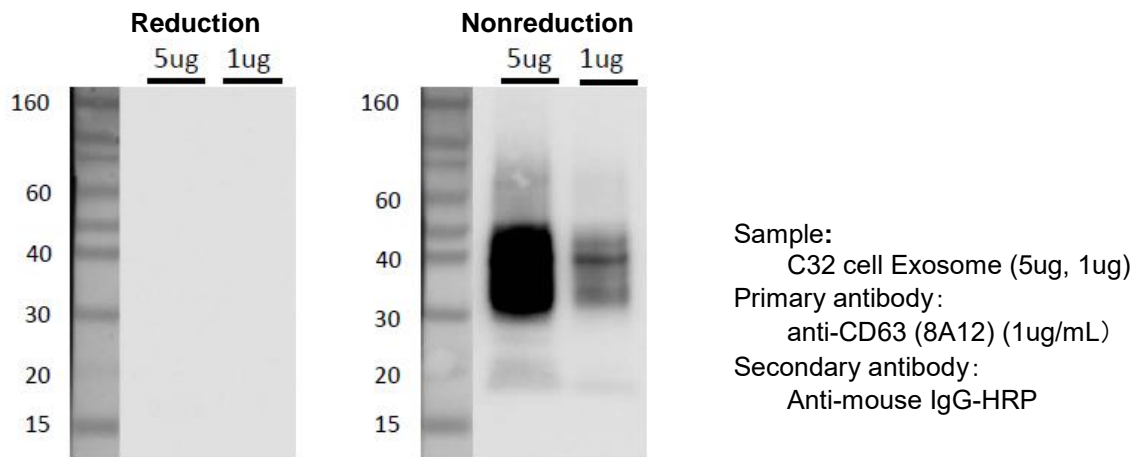
---

<b>Application notes</b>	<ul style="list-style-type: none"><li>• <b>Western blotting:</b> 1/500 - 1/2,000 (0.5 - 2ug/mL, non-reductive condition)</li></ul>
<b>Recommended dilutions</b>	<ul style="list-style-type: none"><li>• <b>Immunoprecipitation:</b> 1/200 – 1/1,000 (1- 5ug/mL)</li><li>• <b>Immunofluorescence:</b> 1/100 – 1/1,000 (1- 10ug/mL)</li><li>• <b>Flow cytometry</b><ul style="list-style-type: none"><li>* Experiment example : Serum and Culture supernatant Exosome</li></ul></li></ul>

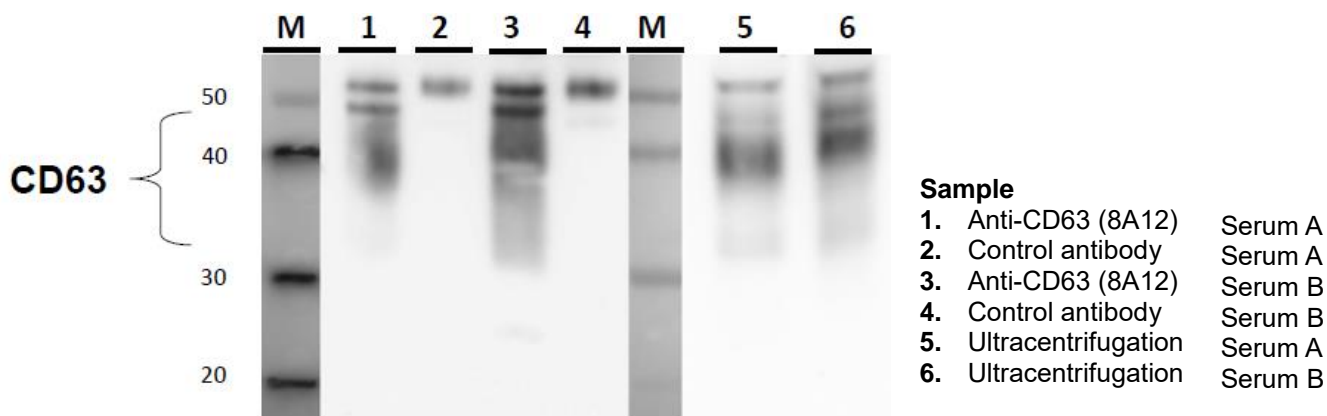
Other applications have not been tested.  
Optimal dilutions/concentrations should be determined by the end user.

<b>References</b>	<ul style="list-style-type: none"><li>• Nishida-Aoki N <i>et al.</i>, <i>Mol Ther.</i> 2017 Jan 4;25(1):181-191. PMID: <a href="#">28129113</a></li><li>• Yoshioka Y <i>et al.</i>, <i>Nat Commun.</i> 2014 Apr 7;5:3591. PMID: <a href="#">24710016</a></li><li>• Saito S <i>et al.</i>, <i>Sci Rep.</i> 2018 Mar 5;8(1):3997. PMID: <a href="#">29507392</a></li></ul>
-------------------	--

# ANTIBODY CHARACTERIZATION

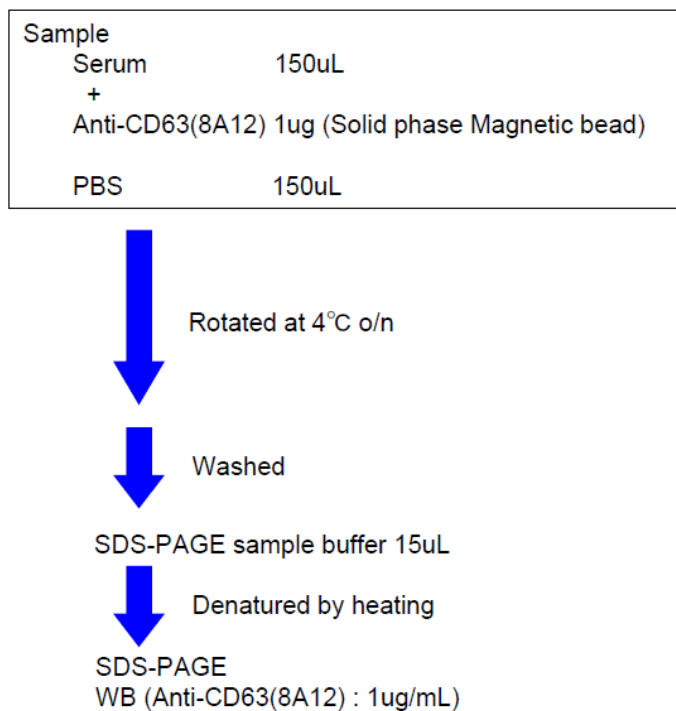


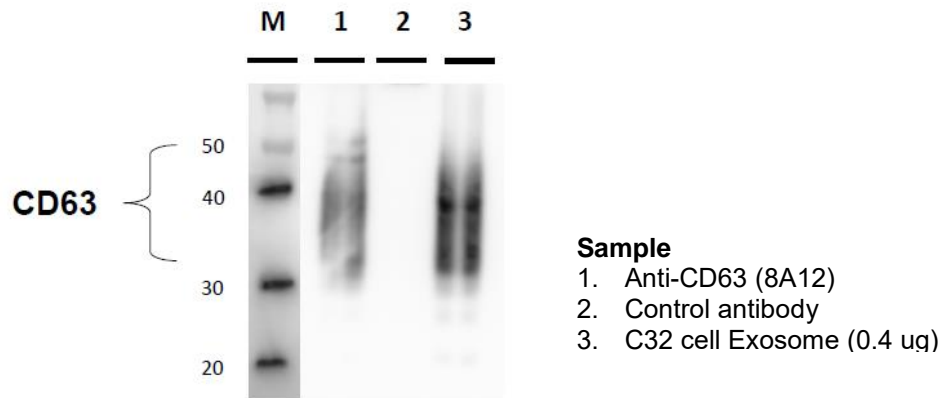
**Fig.1 Western blot analysis of CD63 in C32 cell Exosome with anti-CD63 (8A12) antibody**



**Fig.2 Immunoprecipitation in Human serum exosome**

Protocol





**Fig.3 Immunoprecipitation in C32 cell (Melanoma cell line) Exosome**

**Protocol**

Sample	
C32 cell Exosome	2 ug
+	
Anti-CD63(8A12)	1ug (Solid phase Magnetic bead)
PBS+1%BSA	200uL(Total)



Rotated at 4°C o/n



Washed

SDS-PAGE sample buffer 15uL



Denatured by heating

SDS-PAGE (3uL)  
WB (Anti-CD63(8A12) : 1ug/mL)

**RELATED PRODUCT:**

Product Name	Application	Quantity	Maker	Cat#
Anti CD9 (12A12) Monoclonal Antibody	WB / IP / ELISA	100 ug	CAC	SHI-EXO-M01
Anti CD63 (8A12) Monoclonal Antibody	WB / IP	100 ug	CAC	SHI-EXO-M02
Anti CD81 (12C4) Monoclonal Antibody	WB / IP	100 ug	CAC	SHI-EXO-M03

For research use only, Not for diagnostic use.



**COSMO BIO Co., LTD.**

[JAPAN]  
TOYO EKIMAE BLDG. 2-20, TOYO 2-CHOME,  
KOTO-KU. TOKYO 135-0016, JAPAN  
Phone: +81-3-5632-9610  
FAX: +81-3-5632-9619  
URL: <https://www.cosmobio.co.jp/>



**COSMO BIO USA**

[Outside Japan]  
2792 Loker Ave West, Suite 101  
Carlsbad, CA 92010, USA  
email: [info@cosmobioussa.com](mailto:info@cosmobioussa.com)  
Phone/FAX: (+1) 760-431-4600  
URL: [www.cosmobioussa.com](http://www.cosmobioussa.com)