



MONOCLONAL ANTIBODY

For research use only, Not for diagnostic use.

Catalog NU-07-001

Anti Chondroitin Sulfate A (2H6)**BACKGROUND**

Chondroitin sulfate, a polysaccharide moiety of proteoglycans, is one of the major components of the extracellular matrix of the animal body, and is composed of the repeating unit, [\rightarrow 4GlcA 1 \rightarrow 3GalNAc 1 \rightarrow], commonly sulfated at the C-4 and/or C-6 of GalNAc. In the central nervous system, the most abundant glycosaminoglycan is chondroitin sulfate rich in [GlcA-GalNAc(4S)], namely chondroitin sulfate A. Chondroitin sulfate polysaccharides are involved in various cellular events in the formation, regeneration, and maintenance of the neural network.

This monoclonal antibody recognizes effectively chondroitin sulfate A, especially the glycosaminoglycan existing in the developing central nervous system.

| | |
|-------------------------|------------------------------------------------------------------------------------------------------------------------------------------------------------------------------------------------------|
| Product type | Primary antibody |
| Immunogen | Chondroitin sulfate proteoglycans purified from 10-day-old rat brain |
| Raised in | Mouse (BALB/c) |
| Myeloma | P3-U1 |
| Clone number | 2H6 |
| Isotype | IgM, k-chain |
| Host | - |
| Source | Serum free culture supernatant |
| Purification | Purified by Ion-Exchange Chromatography |
| Buffer | PBS containing 0.02% NaN ₃ as a preservative |
| Concentration | 1.0 mg / mL |
| Volume | 200 ul |
| Label | Unlabeled |
| Specificity | Chondroitin sulfate A |
| Cross reactivity | Variety of established and fresh normal cells derived from various animal species. No cross-react with hyaluronic acid, heparin, heparan sulfate, chondroitin, dermatan sulfate and keratin sulfate. |
| Storage | Shipped at 4°C. Upon arrival aliquot and store at -20°C or below. Aliquot to avoid cycles of freeze/thaw. |

| | |
|------------------------------|---------------------------------------------------------------------------------------------------------------------------------------------------------------------------------------------------------------------------------------------------------------------------|
| Application notes | |
| Recommended dilutions | <ul style="list-style-type: none">• Western blotting: 1/10,000• Immunohistochemistry: 1/100 (Paraffin section), Available (Frozen section)• Immunoprecipitation: Available• ELISA: 1/1,000 – 1/2,000 |

Other applications have not been tested.

Optimal dilutions/concentrations should be determined by the end user.

| | |
|-------------------|---------------------------------------------------------------------------------------------------------------------------------------------------------------------------------------------------------------------------|
| References | <ol style="list-style-type: none">1) Oohira, A., et al.: Neuroscience, 60, 145-157 (1994) PMID: 80524082) Yamamoto, Y., et al.: Eur. J. Histochem., 39, 265-272 (1995) PMID: 8835180 |
|-------------------|---------------------------------------------------------------------------------------------------------------------------------------------------------------------------------------------------------------------------|

ANTIBODY CHARACTERIZATION

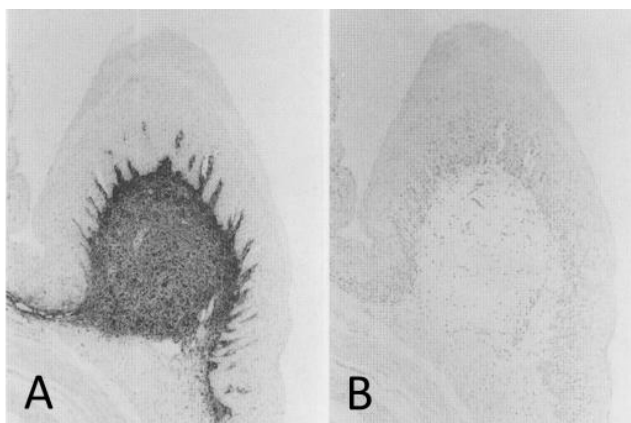


Fig.1 Immunohistochemical staining using the monoclonal anti-chondroitin sulfate A antibody (clone 2H6)
Paraffin sections of omasal papilla from the adult sheep were stained with the monoclonal anti-chondroitin sulfate A antibody before (A) and after (B) digestion with chondroitinase ABC. After pretreatment with the enzyme, the immunoreactivity completely disappeared.
Reference: Eur. J. Histochem., 39 (1995) 265-272.

RELATED PRODUCTS:

| Product Name | Maker | Cat# |
|------------------------------------------------------|-------|-----------|
| Anti Chondroitin Sulfate A (2H6) Monoclonal Antibody | CAC | NU-07-001 |
| Anti Neurocan (1G2) Monoclonal Antibody | CAC | NU-07-002 |
| Anti Neuroglycan C (C1) Monoclonal Antibody | CAC | NU-07-003 |
| Anti N-syndecan Polyclonal Antibody | CAC | NU-07-004 |
| Anti Neurocan peptides Polyclonal Antibody | CAC | NU-07-005 |

For research use only, Not for diagnostic use.



COSMO BIO Co., LTD.

【JAPAN】

TOYO EKIMAE BLDG. 2-20, TOYO 2-CHOME,
KOTO-KU. TOKYO 135-0016, JAPAN
Phone: +81-3-5632-9610
FAX: +81-3-5632-9619
URL: <https://www.cosmobio.co.jp/>



COSMO BIO USA

【Outside Japan】

2792 Loker Ave West, Suite 101
Carlsbad, CA 92010, USA
email: info@cosmobiousa.com
Phone/FAX: (+1) 760-431-4600
URL: www.cosmobiousa.com