



MONOCLONAL ANTIBODY

For research use only, Not for diagnostic use.

**Catalog No. NU-01-PLN**

## Anti plectin (N-terminal)

<b>Product type</b>	Primary Antibodies
<b>Immunogen</b>	An expressed recombinant His-tagged fusion protein of human plectin (U53204, 173 - 595aa)
<b>Clone number</b>	PN753
<b>Isotype</b>	IgG1
<b>Host</b>	Mouse
<b>Formulation</b>	Hybridoma supernatant with 0.02% NaN <sub>3</sub> as a preservative.
<b>Volume</b>	500 µL
<b>Label</b>	Unlabeled
<b>Specificity</b>	N-terminal region of plectin
<b>Cross reactivity</b>	Human, Rat, Rabbit, Porcine
<b>Storage</b>	Store at -20°C or -70°C in small aliquots for prolonged storage. Repeated freeze-thaw cycles can damage the immunoreactivity of an antibody.

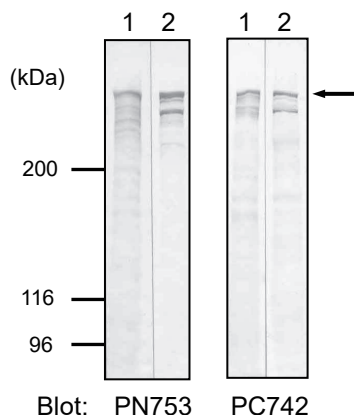
<b>Application notes</b>	<b>Recommended use</b> WB, IF, IP Not tested yet in other applications.
--------------------------	---

**Recommended dilutions**

- Western Blot: 1:100-1:400 for detection of about 500 kDa polypeptide in keratinocyte cell lysates.
  - Immunohistochemistry: 1:100-1:400 for staining of acetone-fixed cryostat tissue sections.
- Optimal dilutions must be determined by end user.

<b>References</b>	1) Hirako Y., <i>et al.</i> (2014) Isolation of a hemidesmosome-rich fraction from a human squamous cell carcinoma cell line. <i>Exp Cell Res.</i> , <b>324</b> : 172-82. PMID: 24726610
-------------------	--

**Example Assay Data**



**Fig. 1 Western blot analysis**

Whole cell lysates prepared from DJM-1 cells (lane 1) and HeLa cells (lane 2) were immunoblotted with PN753 or PC742 at 1:200 dilution.

Plectin antibodies detected approximate 500 kDa bands in these cell lysates (arrow). Smaller polypeptide found in lane 2 may be a degraded product or alternatively spliced rod-less isoform of plectin.

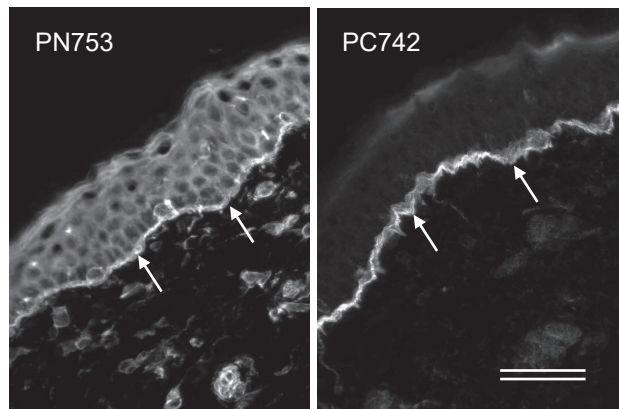
Polypeptides were separated by SDS-PAGE (5% separating gel).

Example Assay Data



**Fig. 2 Location of the epitopes for the plectin antibodies**

PN753 and PC742 clones were obtained by immunizing mice with the NH2- (173-595aa) or the COOH-terminal (2,930-3,153aa) regions of human plectin (4,574aa), respectively. Gray box represents a predicted coiled-coil region (1,300-2,600aa).



**Fig. 3 Immunofluorescence microscopy of human skin**

Human skin sections were stained with PC742 (1:100 dilution) or PN753 (1:100 dilution). Arrows indicate dermal-epidermal junctions. PN753 stains epidermal cells in addition to hemidesmosomes at the dermal-epidermal junction. Sections were fixed with -20°C acetone for 10 min. Bar: 50µm.

RELATED PRODUCTS:

Product Name	Clone	Maker	Cat#
Anti Plectin Monoclonal antibody	PN753	CAC	NU-01-PLN
Anti Laminin γ2 chain Monoclonal antibody	YN557	CAC	NU-01-LA2
Anti BP180/type XVII collagen Monoclonal antibody	C34	CAC	NU-01-BP2
Anti Keratin 8 chain Monoclonal antibody	RL273	CAC	NU-01-KE8

For research use only, Not for diagnostic use.



COSMO BIO Co., LTD.

【JAPAN】  
TOYO EKIMAE BLDG. 2-20, TOYO 2-CHOME,  
KOTO-KU. TOKYO 135-0016, JAPAN  
Phone: +81-3-5632-9610  
FAX: +81-3-5632-9619  
URL: <https://www.cosmobio.co.jp/>



COSMO BIO USA

【Outside Japan】  
2792 Loker Ave West, Suite 101  
Carlsbad, CA 92010, USA  
email: [info@cosmobiousa.com](mailto:info@cosmobiousa.com)  
Phone/FAX: (+1) 760-431-4600  
URL: [www.cosmobiousa.com](http://www.cosmobiousa.com)

Anti plectin mAb, Cat#: NU-01-PLN

2/2

Version# 2-190830