



## MONOCLONAL ANTIBODY

For research use only, Not for diagnostic use.

**Catalog No. NU-01-LA3****Anti Laminin  $\alpha 3$** 

<b>Product type</b>	Primary Antibodies
<b>Immunogen</b>	Native laminin $\alpha 3$ chain from bovine cornea
<b>Clone number</b>	BM515
<b>Isotype</b>	IgG1, kappa
<b>Source</b>	Culture supernatant
<b>Host</b>	Mouse
<b>Formulation</b>	Hybridoma supernatant containing 0.02% $\text{NaN}_3$ as a preservative.
<b>Volume</b>	500 $\mu\text{L}$
<b>Label</b>	Unlabeled
<b>Specificity</b>	Laminin $\alpha 3$ No reactivity against other chains of laminin
<b>Cross reactivity</b>	Human, Rabbit, Bovine, (No cross-react: Mouse, Rat, Porcine) Other species have not been tested.
<b>Storage</b>	Store below $-20^\circ\text{C}$ (below $-70^\circ\text{C}$ for prolonged storage). Aliquot to avoid cycles of freeze/thaw.

<b>Application notes</b>	<b>Recommended use</b> WB, IF, IP
--------------------------	--------------------------------------

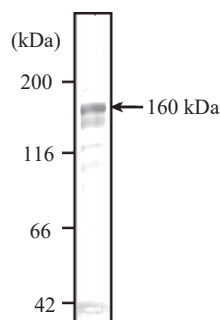
**Recommended dilutions**

- Western Blot : Use at an assay dependant dilution.  
Recognizes a band at approximately 160 kDa. In some specimens, a band of 190-kDa, which represents a non-processed form of laminin 3 chain, can be detected.
- Immunofluorescence : 1/100 – 1/200  
Acetone-fixed cryostat tissue sections.
- Immunoprecipitation : Use at an assay dependant dilution.  
Other applications have not been tested.  
Optimal dilutions/concentrations should be determined by the end user.

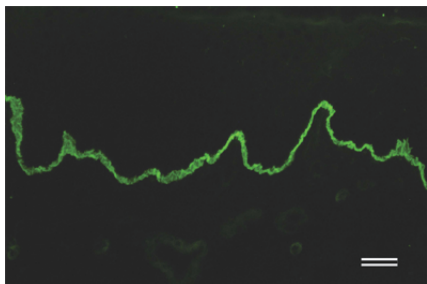
**References**

- 1) Hirako Y., *et al.*, (2003) Extracellular cleavage of bullous pemphigoid antigen 180/type XVII collagen and its involvement in hemidesmosomal disassembly.  
*J Biochem.* **133**: 197-206. PMID: 12761182
- 2) Uematsu J., *et al.*, (2005) Both type-I hemidesmosomes and adherens-type junctions contribute to the cell-substratum adhesion system in myoepithelial cells.  
*Eur J Cell Biol.* **84**: 407-15. PMID: 15819417
- 3) Owaribe K., *et al.*, (1991) Isolation and characterization of hemidesmosomes from bovine corneal epithelial cells. *Exp Cell Res.* **192**: 622-30. PMID: 1988297

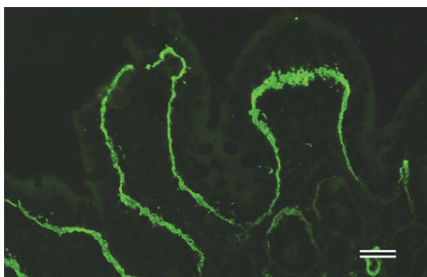
Example Assay Data



**Fig. 1 Western Blot Analysis**  
Extracellular matrix made from Human keratinocyte cell line [HaCaT] was immunoblotted with anti Laminin  $\alpha$ 3, Clone BM515. Arrow indicates Laminin  $\alpha$ 3 (approximately 160 kDa). Non-processed form of Laminin  $\alpha$ 3 chain might be detected around 190 kDa depending on the specimen.



**Fig. 2 Immunofluorescence microscopy of Human skin**  
Human skin section was stained with anti Laminin  $\alpha$ 3, Clone BM515 at 1/200 dilutions. Epidermal basement membranes containing Laminin  $\alpha$ 3 chain is stained to green. Scale bar: 40  $\mu$ m.



**Fig. 3 Immunofluorescence microscopy of Rabbit large intestine**  
Rabbit large intestine section was stained with anti Laminin  $\alpha$ 3, Clone BM515 at 1/200 dilutions. Large intestine basement membrane containing Laminin  $\alpha$ 3 chain is stained to green. Scale bar: 40  $\mu$ m.

RELATED PRODUCTS:


Product Name	Clone	Maker	Cat#
Anti BPAG1 (BP230) Monoclonal Antibody	279	CAC	NU-01-BP1
Anti Laminin $\alpha$ 3 Monoclonal Antibody	BM515	CAC	NU-01-LA3
Anti Collagen 7 Monoclonal Antibody	BML39	CAC	NU-01-CO7

For research use only, Not for diagnostic use.



**COSMO BIO Co., LTD.**

【JAPAN】  
TOYO EKIMAE BLDG. 2-20, TOYO 2-CHOME,  
KOTO-KU. TOKYO 135-0016, JAPAN  
Phone: +81-3-5632-9610  
FAX: +81-3-5632-9619  
URL: <https://www.cosmobio.co.jp/>



**COSMO BIO USA**

【Outside Japan】  
2792 Loker Ave West, Suite 101  
Carlsbad, CA 92010, USA  
email: [info@cosmobiousa.com](mailto:info@cosmobiousa.com)  
Phone/FAX: (+1) 760-431-4600  
URL: [www.cosmobiousa.com](http://www.cosmobiousa.com)