



Anti laminin γ 2 chain monoclonal antibody

Product type	Primary Antibodies
Immunogen	Basement membrane isolated from bovine cornea.
Clone number	YN557
Isotype	IgG1
Host	Mouse
Formulation	Hybridoma supernatant with 0.02% NaN ₃ as a preservative.
Volume	500ul
Label	Unlabeled
Specificity	laminin γ 2 chain
Cross reactivity	Human, bovine
Storage	Store at -20°C or -70°C in small aliquots for prolonged storage. Repeated freeze-thaw cycles can damage the immunoreactivity of an antibody.

Application notes

Recommended use WB, IF, IP

Not tested yet in other applications.

Recommended dilutions Western Blot: 1:20–1:100 for detection of 105 and 150-kDa polypeptides in keratinocyte conditioned culture medium.

Immunofluorescence: 1:50–1:250 for staining of acetone-fixed cryostat frozen tissue sections.
Optimal dilutions must be determined by end user.

References

- (1) Hirako Y., et al. Exp. Cell Res., 324:172-182 (2014)
- (2) Hirako Y., et al. J. Biol. Chem. 273:9711-9717 (1998)

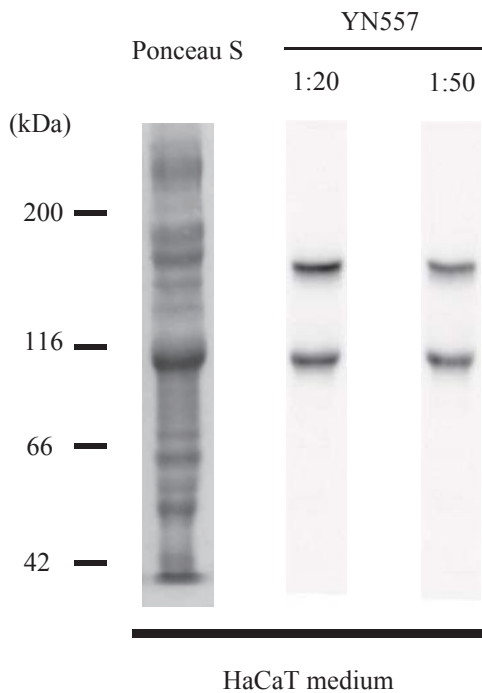


Fig.1 Western blot analysis

Concentrated conditioned medium prepared from HaCaT cells was immunoblotted with YN557 antibody (1:20 and 1:50 dilutions). YN557 antibody detected 105-kDa and 155 kDa bands for processed and non-processed form of laminin gamma 2, respectively (ref. 1). Conditioned medium was concentrated by ammonia sulfate precipitation as described previously (ref. 2).

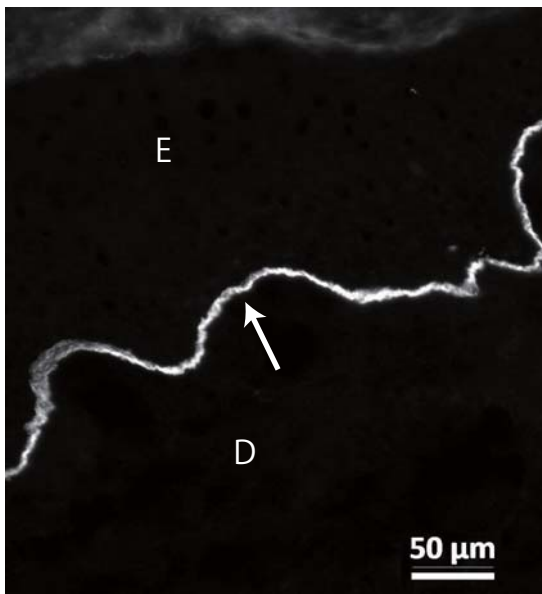


Fig.2 Immunofluorescence microscopy of human skin
A human skin section was stained with YN557 antibody at 1:200 dilution. The antibody revealed the location of laminin gamma 2 chain at the dermal-epidermal junction (arrow). Frozen sections were prepared as described previously (ref. 2). E: epidermis, D: dermis. Bar = 50 um.

For research use only, Not for diagnostic use.



COSMO BIO Co., LTD.

2-20, Toyo 2-Chome, Koto-ku, Tokyo 135-0016, JAPAN

T: +81-3-5632-9617

F: +81-3-5632-9618

E: export@cosmobio.co.jp

W: www.cosmobio.com

日本のお客様

T: 03-5632-9610

F: 03-5632-9619

W: www.cosmobio.co.jp