



MONOCLONAL ANTIBODY

For research use only, Not for diagnostic use.

Catalog No. NU-01-KE8

Anti keratin 8 chain

Product type	Primary Antibodies
Immunogen	TritonX-100 insoluble cytoskeletal fraction of rabbit intestinal epithelial cells.
Clone number	RL273
Isotype	IgG1, kappa
Host	Mouse
Formulation	Hybridoma supernatant with 0.02% NaN ₃ as a preservative.
Volume	500 µL
Label	Unlabeled
Specificity	Keratin 8
Cross reactivity	Human, rabbit
Storage	Store at -20°C or -70°C in small aliquots for prolonged storage. Repeated freeze-thaw cycles can damage the immunoreactivity of an antibody.

Application notes	Recommended use WB, IF Not tested yet in other applications.
--------------------------	---

Recommended dilutions

- Western Blot: 1:100–1:500 for detection of a 50-kDa polypeptide in whole cell lysate of DLD-1 cells.
 - Immunofluorescence: 1:100–1:250 for staining of acetone-fixed cryostat frozen tissue sections.
- Optimal dilutions must be determined by end user.

Example Assay Data

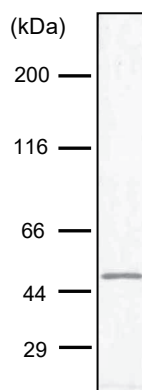


Fig. 1 Western blot analysis

Whole cell lysate prepared from DLD-1 cells was immunoblotted with RL273 antibody (1:200 dilution). The antibody detected a polypeptide band for keratin 8 at approximately 50 kDa. DLD-1 is a human colorectal adenocarcinoma cell line.

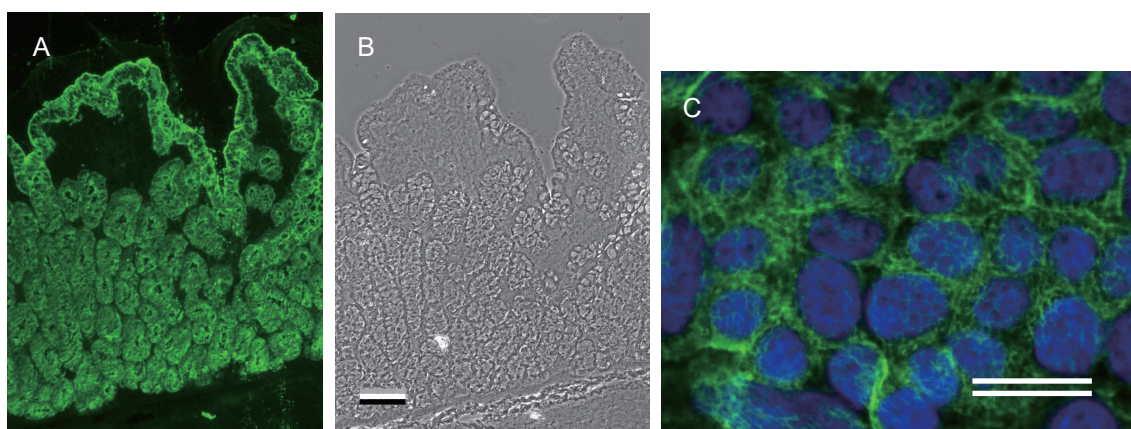


Fig. 2 Immunofluorescence microscopy of rabbit colon and DLD-1 cells.

A frozen section of rabbit colon was stained by RL273 antibody at 1:250 dilution (A). The absorptive epithelial cells and mucosal gland cells were decorated by the antibody. Panel B shows the phase contrast image of A. Bar = 100 μ m.

Acetone-fixed DLD-1 cells were stained by RL273 antibody at 1:250 dilution (C), showing the filamentous networks of keratins (green). Cell nuclei were visualized by DAPI (blue). Bar = 25 μ m.

RELATED PRODUCTS:

Product Name	Clone	Maker	Cat#
Anti Plectin Monoclonal antibody	PN753	CAC	NU-01-PLN
Anti Laminin γ 2 chain Monoclonal antibody	YN557	CAC	NU-01-LA2
Anti BP180/type XVII collagen Monoclonal antibody	C34	CAC	NU-01-BP2
Anti Keratin 8 chain Monoclonal antibody	RL273	CAC	NU-01-KE8

For research use only, Not for diagnostic use.



COSMO BIO Co., LTD.

【JAPAN】

TOYO EKIMAE BLDG. 2-20, TOYO 2-CHOME,
KOTO-KU. TOKYO 135-0016, JAPAN
Phone: +81-3-5632-9610
FAX: +81-3-5632-9619
URL: <https://www.cosmobio.co.jp/>



COSMO BIO USA

【Outside Japan】

2792 Loker Ave West, Suite 101
Carlsbad, CA 92010, USA
email: info@cosmobiousa.com
Phone/FAX: (+1) 760-431-4600
URL: www.cosmobiousa.com