



Anti keratin 8 chain monoclonal antibody

Product type	Primary Antibodies
Immunogen	TritonX-100 insoluble cytoskeletal fraction of rabbit intestinal epithelial cells.
Clone number	RL273
Isotype	IgG1, kappa
Host	Mouse
Formulation	Hybridoma supernatant with 0.02% NaN ₃ as a preservative.
Volume	500ul
Label	Unlabeled
Specificity	Keratin 8
Cross reactivity	Human, rabbit
Storage	Store at -20°C or -70°C in small aliquots for prolonged storage. Repeated freeze-thaw cycles can damage the immunoreactivity of an antibody.

Application notes

Recommended use WB, IF
Not tested yet in other applications.

Recommended dilutions Western Blot: 1:100–1:500 for detection of a 50-kDa polypeptide in whole cell lysate of DLD-1 cells.
Immunofluorescence: 1:100–1:250 for staining of acetone-fixed cryostat frozen tissue sections.
Optimal dilutions must be determined by end user.

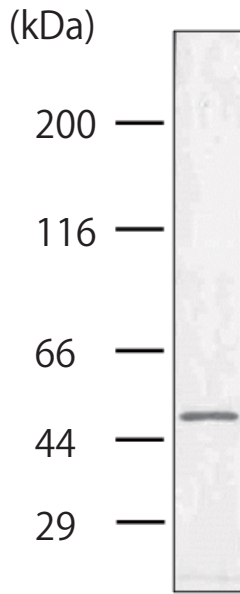


Fig.1 Western blot analysis

Whole cell lysate prepared from DLD-1 cells was immunoblotted with RL273 antibody (1:200 dilution).

The antibody detected a polypeptide band for keratin 8 at approximately 50 kDa. DLD-1 is a human colorectal adenocarcinoma cell line.

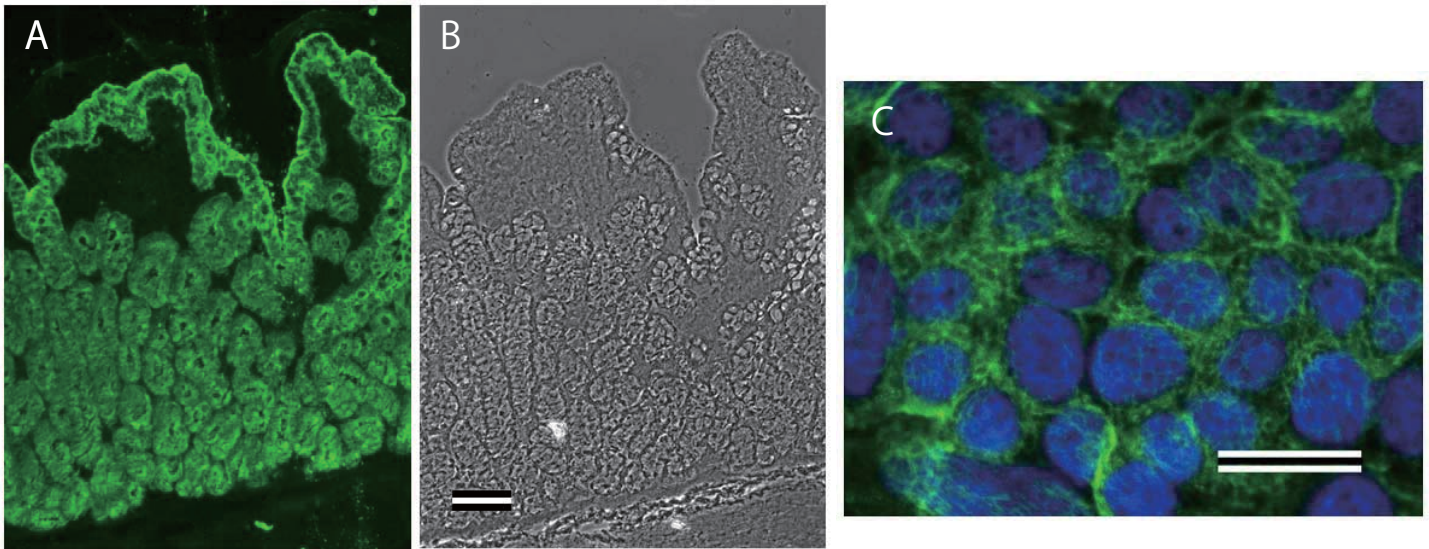


Fig.2 Immunofluorescence microscopy of rabbit colon and DLD-1 cells.

A frozen section of rabbit colon was stained by RL273 antibody at 1:250 dilution (A). The absorptive epithelial cells and mucosal gland cells were decorated by the antibody. Panel B shows the phase contrast image of A. Bar = 100um.

Acetone-fixed DLD-1 cells were stained by RL273 antibody at 1:250 dilution (C), showing the filamentous networks of keratins (green). Cell nuclei were visualized by DAPI (blue). Bar = 25um.

For research use only, Not for diagnostic use.



COSMO BIO Co., LTD.

2-20, Toyo 2-Chome, Koto-ku, Tokyo 135-0016, JAPAN

T: +81-3-5632-9617

F: +81-3-5632-9618

E: export@cosmobio.co.jp

W: www.cosmobio.com

日本のお客様

T: 03-5632-9610

F: 03-5632-9619

W: www.cosmobio.co.jp