



Anti Collagen 7

Product type	Primary Antibodies
Immunogen	Native type-VII collagen from bovine cornea
Clone number	BML39
Purity	Tissue culture supernatant
Host	Mouse
Formulation	Hybridoma supernatant with 0.02% NaN ₃ as a preservative.
Volume	500 µL
Label	Unlabeled
Specificity	No reactivity against other type collagens.
Cross reactivity	Human, Rabbit, Bovine, Porcine (No cross-react: mouse, rat)
Storage	Store below -20°C (below -70°C for prolonged storage). Aliquot to avoid cycles of freeze/thaw.

Application notes	Recommended use WB, IHC, IP
--------------------------	---------------------------------------

Recommended dilutions

- Western Blot: Use at an assay dependant dilution.
Recognizes a band at approximately 300 kDa and degraded fragments around 170 kDa.
 - Immunohistochemistry: 1:100-1:400 for staining of acetone-fixed cryostat tissue sections.
 - Immunoprecipitation: Use at an assay dependant dilution.
- Not tested yet in other applications.
Optimal working dilutions must be determined by end user.

References	<ol style="list-style-type: none">1) Uematsu J., <i>et al.</i> (2005) Both type-I hemidesmosomes and adherens-type junctions contribute to the cell-substratum adhesion system in myoepithelial cells. <i>Eur J Cell Biol.</i>, 84: 407-15. PMID: 158194172) Hirako Y., <i>et al.</i> (1998) Cleavage of BP180, a 180-kDa bullous pemphigoid antigen, yields a 120-kDa collagenous extracellular polypeptide. <i>J Biol Chem.</i>, 273: 9711-7. PMID: 9545306
-------------------	--

Example Assay Data

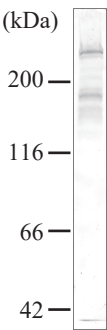


Fig. 1 Western blot analysis
Concentrated conditioned medium prepared from BMGE+H cells was immunoblotted with BML39 antibody (1:50 dilutions). BML39 antibody detected type-7 collagen as a band at approximately 300 kDa (full-length) and degraded fragments around 170 kDa. Conditioned medium was concentrated by ammonia sulfate precipitation as described previously (ref. 2). Polypeptides were separated by SDS-PAGE (7.5% separating gel).

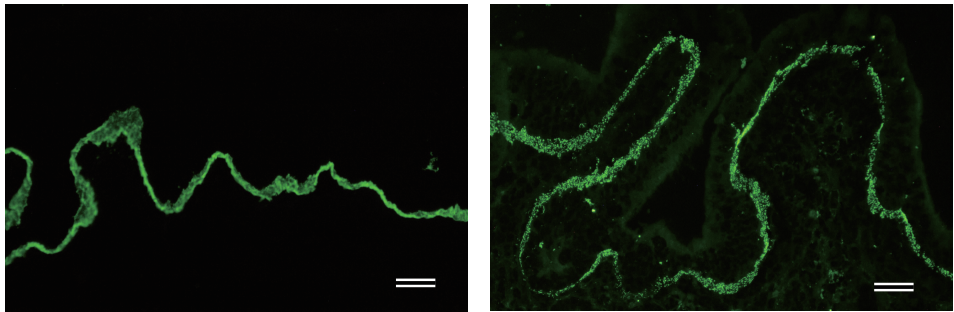


Fig. 2 Immunofluorescence microscopy of human skin and rabbit large intestine
Frozen sections of human skin (left) and rabbit large intestine (right) were stained with BML39 antibody at 1:200 dilution. The antibody revealed the location of type VII collagen at basement membranes (arrows). Bars = 40 μ m. Frozen sections were prepared as described previously (ref. 2).

RELATED PRODUCTS:

Product Name	Clone	Maker	Cat#
Anti BPAG1 (BP230) Monoclonal Antibody	279	CAC	NU-01-BP1
Anti Laminin α 3 Monoclonal Antibody	BM515	CAC	NU-01-LA3
Anti Collagen 7 Monoclonal Antibody	BML39	CAC	NU-01-CO7

For research use only, Not for diagnostic use.



COSMO BIO Co., LTD.

【JAPAN】
TOYO EKIMAE BLDG. 2-20, TOYO 2-CHOME,
KOTO-KU. TOKYO 135-0016, JAPAN
Phone: +81-3-5632-9610
FAX: +81-3-5632-9619
URL: <https://www.cosmobio.co.jp/>



COSMO BIO USA

【Outside Japan】
2792 Loker Ave West, Suite 101
Carlsbad, CA 92010, USA
email: info@cosmobiousa.com
Phone/FAX: (+1) 760-431-4600
URL: www.cosmobiousa.com