



MONOCLONAL ANTIBODY

For research use only, Not for diagnostic use.

**Catalog No. NU-01-BP1**

## Anti BPAG1 (BP230)

Product type	Primary Antibodies
Immunogen	Native BP230 from bovine cornea
Clone number	279
Isotype	IgG1, kappa
Host	Mouse
Formulation	Hybridoma supernatant with 0.02% NaN <sub>3</sub> as a preservative.
Volume	500 µL
Label	Unlabeled
Specificity	BPAG1 (BP230)
Cross reactivity	Human, Mouse, Rat, Rabbit, Bovine, Porcine
Storage	Store below -20°C (below -70°C for prolonged storage). Repeated freeze-thaw cycles can damage the immunoreactivity of an antibody.

Application notes	<b>Recommended use</b> WB, IF, IP Not tested yet in other applications.
-------------------	---

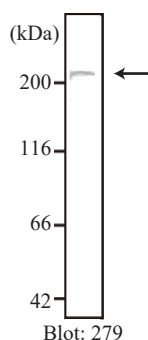
**Recommended dilutions**

- Western Blot: 1:50 for starting dilution.
- Immunofluorescence: 1:50-1:200 for staining of acetone-fixed cryostat frozen tissue sections.

Frozen sections were prepared as described previously (ref. 3).  
Optimal concentrations/dilutions should be determined by the end user.

References	<ol style="list-style-type: none"><li>1) Hirako Y., <i>et al.</i> (2014) Isolation of a hemidesmosome-rich fraction from a human squamous cell carcinoma cell line. <i>Exp Cell Res.</i> <b>324</b>: 172-82. PMID: 24726610</li><li>2) Okumura M., <i>et al.</i> (2002) Novel alternative splicings of BPAG1 (bullous pemphigoid antigen 1) including the domain structure closely related to MACF (microtubule actin cross-linking factor). <i>J Biol Chem.</i> <b>277</b>: 6682-7. PMID: 11751855</li><li>3) Hirako Y., <i>et al.</i> (1998) Cleavage of BP180, a 180-kDa bullous pemphigoid antigen, yields a 120-kDa collagenous extracellular polypeptide. <i>J Biol Chem.</i> <b>273</b>: 9711-7. PMID: 9545306</li></ol>
------------	---

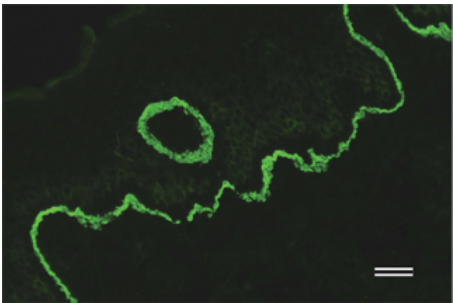
### Example Assay Data



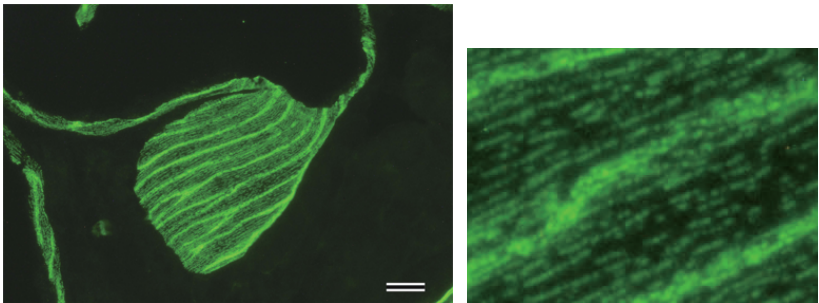
**Fig. 1 Western blot analysis**

Whole cell lysate prepared from DJM-1 cells was immunoblotted with 279 at 1:100 dilution.  
279 antibody recognized BPAG1 (Bullous Pemphigoid antigen 1) as a band at approximately 230 kDa (arrow).

Example Assay Data



**Fig. 2 Immunofluorescence microscopy of human skin**  
Human skin was stained by 279 antibody (1:50), showing that BPAG1 localized at the dermal-epidermal junction (green). Bar: 40  $\mu$ m.



**Fig. 3 Immunofluorescence microscopy of bovine skin**  
Bovine skin was stained by 279 antibody (1:50 dilution).  
Myoepithelial cells of skin apocrine glands were demonstrated to have BPAG1 (left panel, green). The close-up image (right) shows dotted lines of hemidesmosomes, which are cell to substrate adhesion structures containing BPAG1. Scale bar: 20  $\mu$ m.

RELATED PRODUCTS:

Product Name	Clone	Maker	Cat#
Anti BPAG1 (BP230) Monoclonal Antibody	279	CAC	NU-01-BP1
Anti Laminin $\alpha$ 3 Monoclonal Antibody	BM515	CAC	NU-01-LA3
Anti Collagen 7 Monoclonal Antibody	BML39	CAC	NU-01-CO7

For research use only, Not for diagnostic use.



**COSMO BIO Co., LTD.**

【JAPAN】  
TOYO EKIMAE BLDG. 2-20, TOYO 2-CHOME,  
KOTO-KU. TOKYO 135-0016, JAPAN  
Phone: +81-3-5632-9610  
FAX: +81-3-5632-9619  
URL: <https://www.cosmobio.co.jp/>



**COSMO BIO USA**

【Outside Japan】  
2792 Loker Ave West, Suite 101  
Carlsbad, CA 92010, USA  
email: [info@cosmobiousa.com](mailto:info@cosmobiousa.com)  
Phone/FAX: (+1) 760-431-4600  
URL: [www.cosmobiousa.com](http://www.cosmobiousa.com)