



POLYCLONAL ANTIBODY

For research use only. Not for clinical diagnosis.

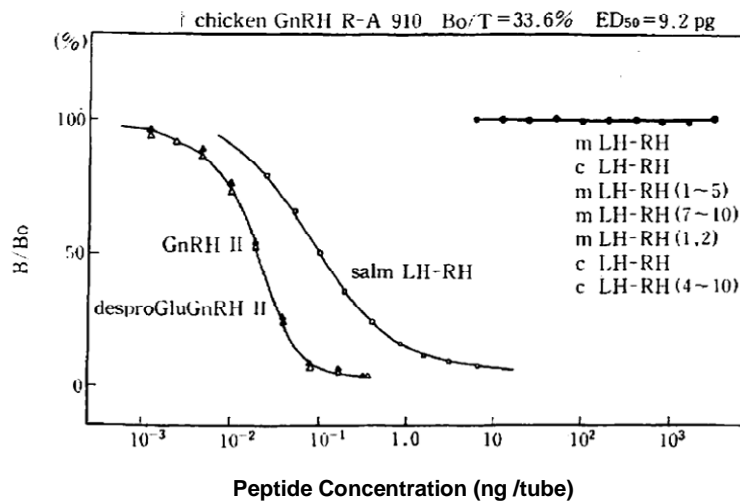
Catalog No. KZ-HS-P04

Anti chicken des pyroGlu GnRH II (c GnRH II)

BACKGROUND

Gonadotropin Releasing Hormone (GnRH), also known as Luteinizing-hormone-releasing-hormone (LHRH) and luliberin, is a tropic peptide hormone responsible for the release of follicle-stimulating hormone (FSH) and Luteinizing Hormone (LH) from the anterior pituitary. GnRH is synthesized and released from neurons within the hypothalamus. The peptide belongs to gonadotropin-releasing hormone family.

Product type	Primary antibodies
Host	Rabbit
Form	Serum
Volume	50 μ l
Antigen	Synthetic chicken GnRH II (2-10) GnRH II
Cross reactivity	Chicken GnRH II, most mammals, vertebrates
Application notes	Recommended dilutions RIA : 1/100,000 - 1/400,000 IHC : 1/5,000 - 1/20,000 Neutrization : n/d



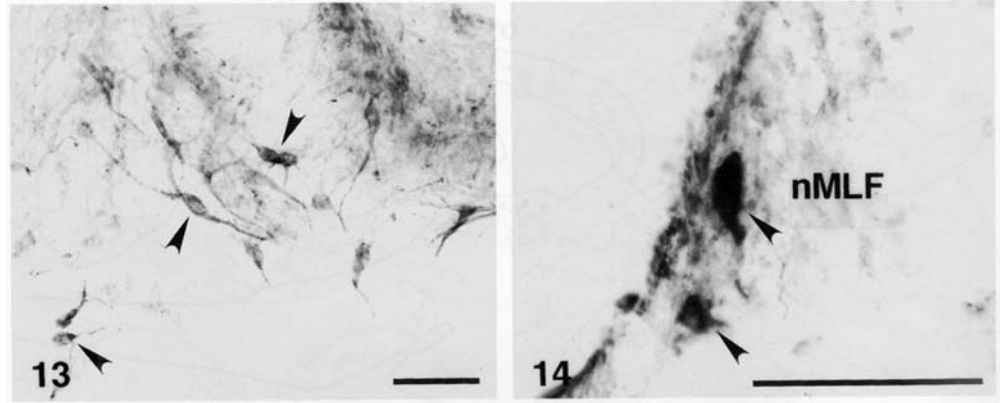


Fig.13 Sagittal section through the midbrain tegmentum. cGnRH-II-ir cell bodies (arrowhead) are observed in the nMLF.

Fig.14 Frontal section through the midbrain tegmentum. cGnRH-II-ir cell bodies (arrowheads) are observed in the nMLF (ref. 2)

Storage

Store below -20°C (below -70°C for prolonged storage).

Aliquot to avoid cycles of freeze/thaw.

References

- 1) Miyamoto K, Hasegawa Y, Nomura M, Igarashi M, Kangawa K & Matsuo H (1984) Identification of the second gonadotropin-releasing hormone in chicken hypothalamus : Evidence that gonadotropin secretion is probably controlled by two distinct gonadotropin-releasing hormones in avian species. *Proc Natl Acad Sci USA* 81: 3874–3878
- 2) Amano M, Oka Y, Aida K, Okumoto N, Kawashima S & Hasegawa Y (1991) Immunocytochemical demonstration of salmon GnRH and chicken GnRH-II in the brain of masu salmon, *Oncorhynchus masou*. *J Comp Neurol* 314: 587-597.
- 3) Kobayashi M, Amano M, Kim MH, Furukawa K, Hasegawa Y & Aida K (1994) Gonadotropin releasing hormones of terminal nerve origin are not essential to ovarian development and ovulation in goldfish. *Gen Com Endocrinol* 95: 192-200

For research use only. Not for clinical diagnosis.



COSMO BIO Co., LTD.

Inspiration for Life Science

TOYO 2CHOME, KOTO-KU, TOKYO, 135-0016, JAPAN

URL: <http://www.cosmobio.co.jp>

e-mail: export@cosmobio.co.jp

[Outside Japan] Phone : +81-3-5632-9617

[国内連絡先] Phone : +81-3-5632-9610

FAX : +81-3-5632-9618

FAX : +81-3-5632-9619