



POLYCLONAL ANTIBODY

For research use only. Not for clinical diagnosis.

Catalog No. KZ-HS-P02

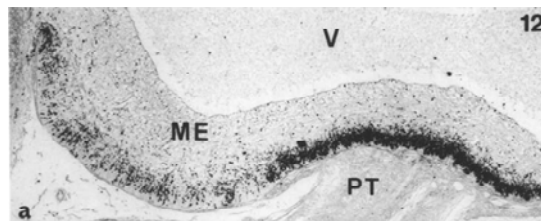
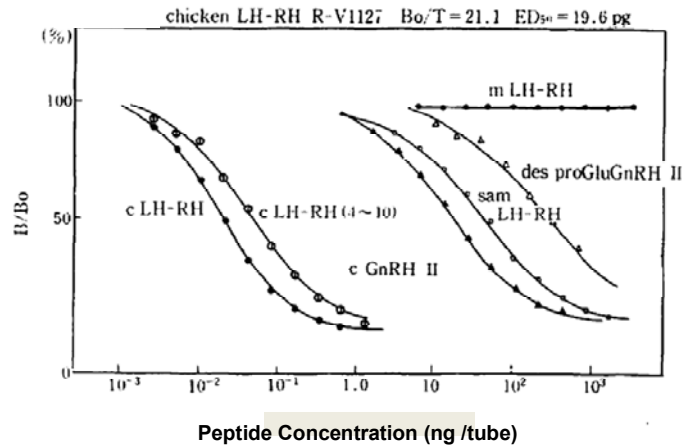
Anti Chicken LHRH

BACKGROUND

Gonadotropin Releasing Hormone (GnRH), also know as Luteinizing-hormone-releasing-hormone (LHRH) and luliberin, is a tropic peptide hormone responsible for the release of follicle-stimulating hormone (FSH) and Luteinizing Hormone (LH) from the anterior pituitary. GnRH is synthesized and released from neurons within the hypothalamus. The peptide belongs to gonadotropin-releasing hormone family

Product type	Primary antibodies
Host	Rabbit
Form	Serum
Volume	50 µl
Antigen	Synthetic chicken LHRH
Cross reactivity	Chicken, Quail, Turkey etc
Application notes	Recommended dilutions

RIA : 1/100,000 - 1/400,000
IHC : 1/5,000 - 1/20,000
Neutrization : n/d



Storage

Store below -20°C (below -70°C for prolonged storage).

Aliquot to avoid cycles of freeze/thaw.

References

1) Miyamoto K, Hasegawa Y, Minegishi T, Nomura M, Takahashi Y & Igarashi M (1982) Isolation and characterization of chicken hypothalamic luteinizing hormone-releasing hormone.

Biochem Biophys Res Commun 107: 820– 827

2) Mikami S, Yamada S, Hasegawa Y & Miyamoto K (1988) Localization of avian LHRH- immunoreactive neurons in the hypothalamus of the domestic fowl, *Gallus domesticus*, and Japanese quail, *Coturnix coturnix*. Cell Tiss Res 251: 51-58

3) 長谷川喜久 (1988) 内分泌試験 (各種ホルモンの抗体作製法)

佐久間勇次 監修 ウサギ-生殖生理と実験手技 P.201-216、近代出版

For research use only. Not for clinical diagnosis.



COSMO BIO Co., LTD.

Inspiration for Life Science

TOYO 2CHOME, KOTO-KU, TOKYO, 135-0016, JAPAN

URL: <http://www.cosmobio.co.jp>

e-mail: export@cosmobio.co.jp

[Outside Japan] Phone : +81-3-5632-9617

[国内連絡先] Phone : +81-3-5632-9610

FAX : +81-3-5632-9618

FAX : +81-3-5632-9619