



MONOCLONAL ANTIBODY

For research use only. Not for clinical diagnosis.

Catalog No. KZ-HS-M02

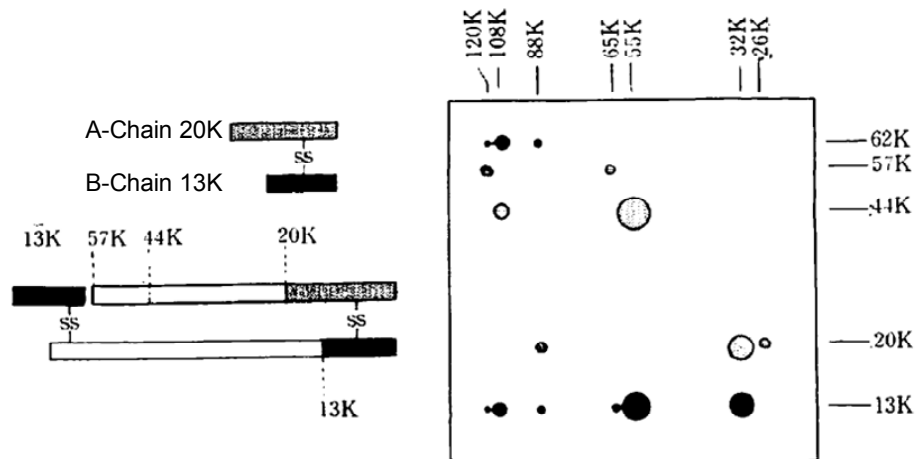
Anti Bovine Inhibin (β A Subunit)

BACKGROUND

Inhibin is an endocrine hormone produced in the ovaries, the testes and the placenta. This hormone has several functions in the body, with inhibin levels in women being linked to the menstrual cycle and playing a role in fetal development. Another hormone, activin, has an action in the body opposite to that of inhibin. Levels of these two hormones tend to fluctuate in both men and women in response to a number of cues which can include changes in hormone levels triggered by natural biological processes, environmental pressure, and other factors.

Product type	Primary antibodies
Host	Mouse
Form	Ascites
Volume	100 μ l
Antigen	32 kDa bovine inhibin
Cross reactivity	Bovine, Ovine, Human, Rat, Mouse
Application notes	Recommended dilutions

IHC : 1/200 - 1/1,000
WB : 1/200 - 1/1,000



Storage Store below -20°C (below -70°C for prolonged storage).
Aliquot to avoid cycles of freeze/thaw.

References

- 1) Miyamoto K, Hasegawa Y, Fukuda M, Nomura M, Igarashi M, Kangawa K & Matsuo H (1985) Isolation of porcine follicular fluid inhibin of 32K daltons. *Biochem Biophys Res Commun* 129:396-403
- 2) Miyamoto K, Hasegawa Y, Fukuda M & Igarashi M (1986) Demonstration of high molecular weight forms of inhibin in bovine follicular fluid (bFF) by using monoclonal antibodies to bFF32K inhibin. *Biochem Biophys Res Commun* 136: 1103- 1109
- 3) 長谷川喜久 (1988) 内分泌試験 (各種ホルモンの抗体作製法) 佐久間勇次 監修 ウサギー 生殖生理と実験手技 P.201-216、近代出版

For research use only. Not for clinical diagnosis.



COSMO BIO Co., LTD.

Inspiration for Life Science

TOYO 2CHOME, KOTO-KU, TOKYO, 135-0016, JAPAN

URL: <http://www.cosmobio.co.jp>

e-mail: export@cosmobio.co.jp

[Outside Japan] Phone : +81-3-5632-9617

[国内連絡先] Phone : +81-3-5632-9610

FAX : +81-3-5632-9618

FAX : +81-3-5632-9619