



MONOCLONAL ANTIBODY

For research use only, Not for diagnostic use.

**Catalog No.KYU-TM-M001**

## Anti Catechin

### BACKGROUND

Catechins are one type of polyphenol included in green tea, known to show multimodal effects such as antioxidant, anticancer, anti-allergic, antibacterial and abdominal fat reducing effects. Our antibody reacts with epigallocatechin (EGC), epicatechin galleate (ECg), epigallocatechin galleate (EGCg), galocatechin (GC), catechin galleate (Cg) and galocatechin galleate (GCg).

It especially reacts well with galocatechin galleate (GCg) and epigallocatechin galleate (EGCg).

<b>Product type</b>	Primary Antibodies
<b>Immunogen</b>	3-Succinyl Epicatechin (EC) conjugated KLH
<b>Rased in</b>	Mouse (BALB/c)
<b>Myeloma</b>	-
<b>Clone number</b>	b-1058
<b>Isotype</b>	IgG2a
<b>Source</b>	Ascite
<b>Purification</b>	Ion exchange chromatography
<b>Buffer</b>	Phosphate buffered saline (PBS) *NOTE:PBS doesn't contain preservative. Preservative is added based on the research purpose
<b>Concentration</b>	1 mg / mL
<b>Volume</b>	100 uL
<b>Label</b>	Unlabeled
<b>Specificity</b>	ECg, Cg, GCg, EGCg, GC and EGC Minimal cross reactivity with catechin and epicatechin
<b>Storage</b>	below -20 degrees
<b>Other</b>	-

<b>Application notes</b>	direct ELISA 1 / 10,000 (0.1ug / mL)
<b>Recommended</b>	SPR 57ug / mL
<b>dilutions</b>	Other applications have not been tested. Optimal dilutions/concentrations should be determined by the end user.

### References

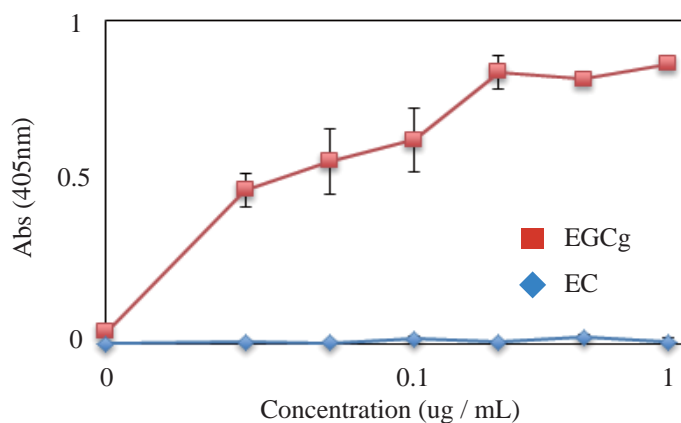
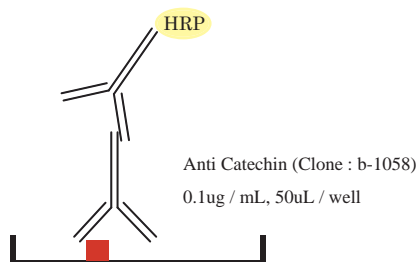


Fig.1 Direct ELISA data of EGCg and EC with Anti Catechin monoclonal Antibody (Clone : b-1058)

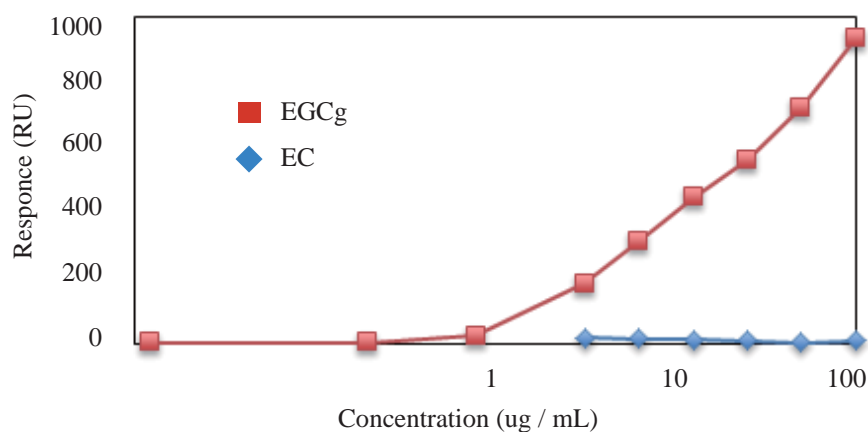


Fig.2 Evaluation of EGCg/EC-Catechin monoclonal antibody (Clone : b-1058) interaction was performed by BIAcoreX. The b-1058 was diluted in 10mM acetate buffer, pH 5.0 and bind on CM5 sensor chip. Binding of EGCg/EC was determined a range of concentration (0.012 to 100ug/mL) in 0.1M phosphate buffer, pH6.0 containing HBS-EP buffer (0.01 M HEPES pH 7.4, 0.15 M NaCl, 3 mM EDTA, 0.005% v/v Surfactant P20) with a flowrate of 10uL/min at 25°C.

For research use only, Not for diagnostic use.



**COSMO BIO Co., LTD.**

Inspiration for Life Science

TOYO 2CHOME, KOTO-KU, TOKYO, 135-0016, JAPAN

URL: <http://www.cosmobio.co.jp> e-mail: [export@cosmobio.co.jp](mailto:export@cosmobio.co.jp)

[Outside Japan] Phone: +81-3-5632-9617 [国内連絡先] Phone: +81-3-5632-9610

FAX: +81-3-5632-9618

FAX: +81-3-5632-9619