

**MONOCLONAL ANTIBODY**

For research use only, Not for diagnostic use

Catalog No. KMU-MA01A**Anti MSR-A / CD204 [clone SRA-E5p6]****BACKGROUND**

CD204, also referred as class A macrophage scavenger receptor class A type I/II (MSR-A) or macrophage scavenger receptor type I/II (MSR1), is one of the major receptors of macrophages and plays important roles in many macrophage-related disorders. CD204 binds various negatively charged macromolecules, such as modified low-density lipoproteins, fucoidan, advanced glycation end-products, denatured collagen, and bacterial components.

The hybridoma cell line (clone SRA-E5p6) is a highly sensitive antibody-producing hybridoma selected from the original hybridoma cell line (clone SRA-E5) by re-cloning.

Product type	Primary antibody
Immunogen	Human CD204 recombinant protein (131-451)
Raised in	BALB/c mouse
Myeloma	NS-1
Clone number	SRA-E5p6
Isotype	-
Source	Culture supernatant
Purification	Protein G affinity chromatography
Form	Liquid. 0.2M Glycine, 0.1M Tris/HCl buffer pH7.4
Concentration	1 mg/mL
Volume	50 µg
Label	Unlabeled
Specificity	Human
Cross reactivity	Mouse, Rat, Bovine, Monkey, Cow, Horse, Swine, Beagle, Cat, Rabbit, Guinea pig, Hamster
Storage	Store below -20°C. Aliquot to avoid cycles of freeze/thaw.

Application notes	• Western blot: 3-10 µg /mL (reduced condition)
Recommended dilutions	• Immunohistochemistry (IHC, IHC-P): 1-10 µg /mL • Flow cytometry: 1-5 µg /mL (Permeabilization is recommended)

Other applications have not been tested.

Optimal dilutions/concentrations should be determined by the end user.

References	1) Nature. 1997 Mar 20;386(6622):292-6. 2) Atherosclerosis. 2002 Mar;161(1):123-32. (IHC) 3) J Atheroscler Thromb. 2016;23(1):10-7. (Western blot) 4) Arthritis Res Ther. 2010;12(4):R128. (Flow cytometry)
-------------------	--

ANTIBODY CHARACTERIZATION

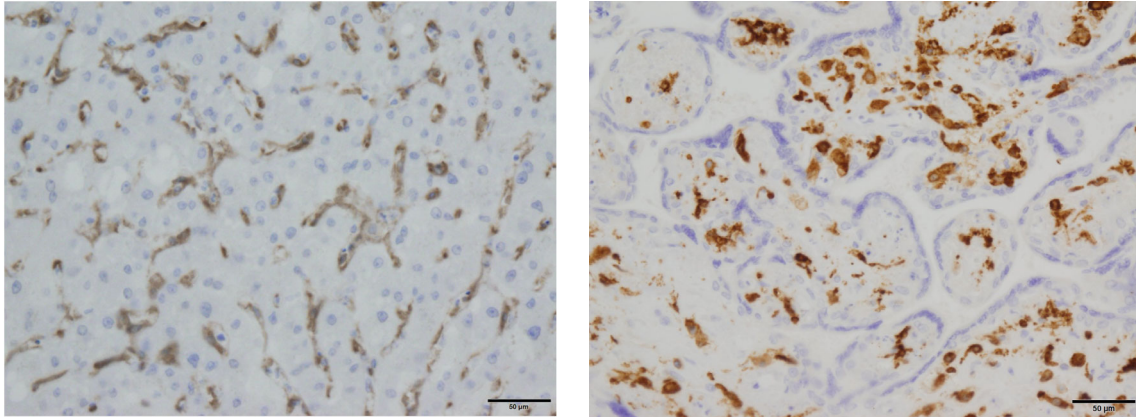


Figure 1. Immunohistochemistry of CD204 in human liver and human placenta (Paraffin sections)
There are so many CD204-positive macrophages in human liver (left) and human placenta (right).
Scale bars = 50µm. Antigen retrieval: 1mM EDTA buffer (pH8.0), heat (microwave for 5 min).

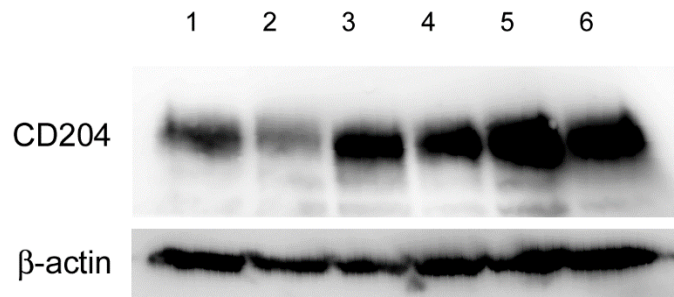


Figure 2. Western blot analysis of CD204 in human monocyte-derived macrophages

Predicted molecular weight of CD204 is 43 kDa, however, molecular mass is approximately 50-70 kDa due to glycosylation under reducing condition. Pre-treatment with N-glycosidase is recommended. The clone SRA-E5 is used as the primary antibody.

Lane 1; Control human monocyte-derived macrophages

Lane 2; Macrophages stimulated with IL-4

Lane 3; Macrophages stimulated with IL-10

Lane 4-6; Macrophages stimulated with conditional medium of breast cancer cell lines.



COSMO BIO Co., LTD.

【JAPAN】

TOYO EKIMAE BLDG. 2-20, TOYO 2-CHOME,
KOTO-KU. TOKYO 135-0016, JAPAN
Phone: +81-3-5632-9610
FAX: +81-3-5632-9619
URL: <https://www.cosmobio.co.jp/>



COSMO BIO USA

【Outside Japan】

2792 Loker Ave West, Suite 101
Carlsbad, CA 92010, USA
email: info@cosmobiousa.com
Phone/FAX: (+1) 760-431-4600
URL: www.cosmobiousa.com