



MONOCLONAL ANTIBODY

For research use only, Not for diagnostic use.

Catalog No.KMU-MA01

Anti MSR-A / CD204 [clone SRA-E5]

BACKGROUND

CD204, also referred as class A macrophage scavenger receptor class A type I/II (MSR-A) or macrophage scavenger receptor type I/II (MSR1), is one of the major receptors of macrophages and plays important roles in many macrophage-related disorders. CD204 binds various negatively charged macromolecules, such as modified low-density lipoproteins, fucoidan, advanced glycation end-products, denatured collagen, and bacterial components.

Product type	Primary Antibodies
Immunogen	Human CD204 recombinant protein (131-451)
Rased in	BALB/c mouse
Myeloma	NS-1
Clone number	SRA-E5
Isotype	IgG1, kappa
Source	Ascites
Purification	Gel filtration chromatography
Buffer	100mM Tris (pH 7.4) with 0.02% Sodium Azide
Concentration	1mg / mL
Volume	50ug
Specificity	Human
Cross reactivity	Mouse, Rat, Bovine, Monkey, Cow, Horse, Swine, Beagle, Cat, Rabbit, Guinea pig, Hamster
Storage	below -20 degrees

Application notes	• Western blot: 3-10 ug/ml (reduced condition)
Recommended dilutions	• Immunohistochemistry (IHC, IHC-P): 1-10 ug/ml • Flow cytometry: 1-5 ug/ml (Permeabilization is recommended) Other applications have not been tested. Optimal dilutions/concentrations should be determined by the end user.

References	Nature. 1997 Mar 20;386(6622):292-6. Atherosclerosis. 2002 Mar;161(1):123-32. (IHC) J Atheroscler Thromb. 2016;23(1):10-7. (Western blot) Arthritis Res Ther. 2010;12(4):R128. (Flow cytometry)
-------------------	--

ANTIBODY CHARACTERIZATION

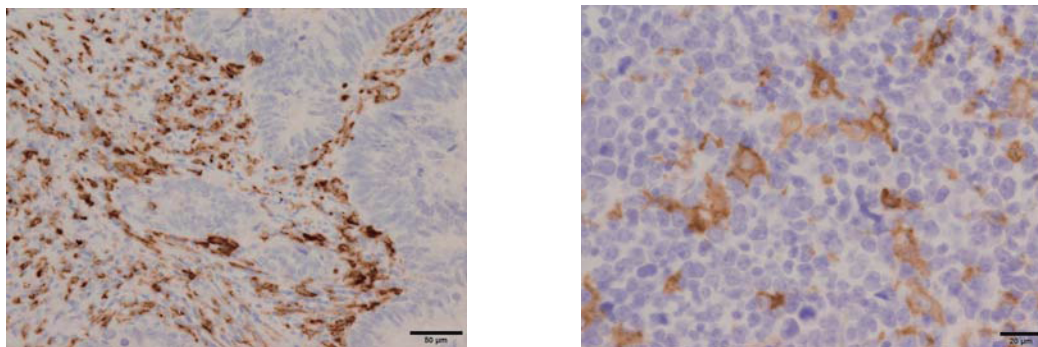


Figure 1: Immunohistochemistry of CD204 in human colon cancer and lymphoma (Paraffin sections).
There are many CD204-positive macrophages in stroma of colon cancer (left) and lymphoma (right).
Antigen retrieval: 1mM EDTA buffer (pH8.0), heat (microwave for 5 min)

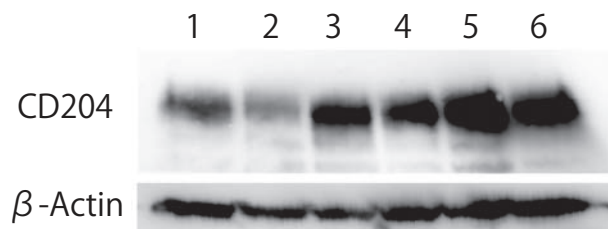


Figure 2: Western blot analysis of CD204 in human monocyte-derived macrophages.

Predicted molecular weight of CD204 is 43 kDa, however, molecular mass is approximately 50-70 kDa due to glycosylation under reducing condition.

Pre-treatment with N-glycosidase is recommended.

Lane 1: Control human monocyte-derived macrophages, Lane 2: Macrophages stimulated with IL-4,

Lane 3: Macrophages stimulated with IL-10, Lane 4-6: Macrophages stimulated with conditional medium of breast cancer cell lines.

For research use only, Not for diagnostic use.



COSMO BIO Co., LTD.

【JAPAN】

TOYO EKIMAE BLDG. 2-20, TOYO 2-CHOME,
KOTO-KU. TOKYO 135-0016, JAPAN
Phone: +81-3-5632-9610
FAX: +81-3-5632-9619
URL: <https://www.cosmobio.co.jp/>



COSMO BIO USA

【Outside Japan】

2792 Loker Ave West, Suite 101
Carlsbad, CA 92010, USA
email: info@cosmobiousa.com
Phone/FAX: (+1) 760-431-4600
URL: www.cosmobiousa.com