



## POLYCLONAL ANTIBODY

For research use only, Not for diagnostic use.

Catalog No. ICA-TG2-RTP1

# Anti Human ITIH4

## [ inter-alpha-trypsin inhibitor heavy chain family, member 4 ]

**BACKGROUND**

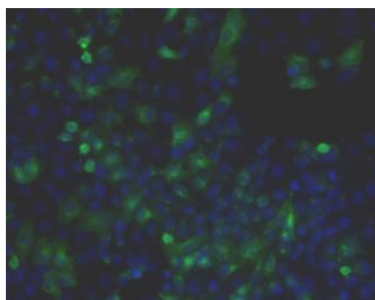
ITIH4 is the inter-alpha-trypsin inhibitor heavy chain family, member 4. The protein encoded by this gene is secreted into the blood, where it is cleaved by plasma kallikrein into two smaller forms. Expression of this gene has been detected only in liver.

<b>Product type</b>	Primary antibody
<b>Immunogen</b>	ICANtibodies™ encoding human ITIH4 full length nucleic acid sequence
<b>Host Species</b>	Brown Norway Rat
<b>Fusion Partner</b>	-
<b>Clone Designation</b>	-
<b>Isotype</b>	-
<b>Source</b>	Whole Serum
<b>Purification</b>	-
<b>Formulation Buffer /Form</b>	Liquid (Preservative : None)
<b>Concentration</b>	-
<b>Volume</b>	50 UL
<b>Label</b>	Unlabeled
<b>Specificity</b>	Human ITIH4
<b>Cross species reactivity</b>	Rat. Other species is not tested.
<b>Storage Conditions</b>	Store at -20°C (at -70°C for prolonged storage). Aliquot to avoid cycles of freeze/thaw.  Storage Instructions : Prepare fresh working dilution before use. Avoid repeated freezing and thawing cycles (it is advisable to make aliquots before storage). Alternatively, add an equal volume of glycerol (ACS grade or better) for a final concentration of 50% and store at -20°C as a liquid. Note : Adding glycerol reduces the stated protein concentration and dilution range by one-half

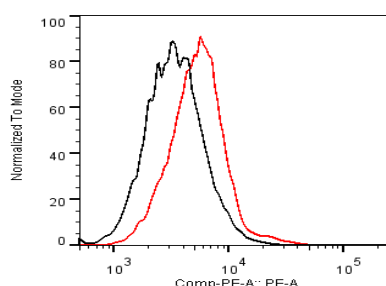
<b>Application notes</b>	<ul style="list-style-type: none"><li>• <b>Immunohistochemistry:</b> 1/50</li><li>• <b>Flow cytometry:</b> 1/100</li><li>• <b>ELISA:</b> 1/500</li><li>•</li></ul> Other applications have not been tested. Optimal dilutions/concentrations should be determined by the end user.
<b>Recommended dilutions</b>	

<b>References</b>	-
-------------------	---

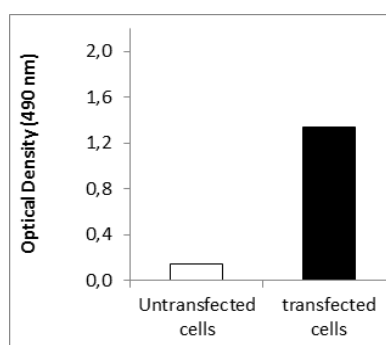
## ANTIBODY CHARACTERIZATION



**Fig.1 Immunohistochemistry:** HeLa cells transfected with ICAfectin441 and plasmid encoding human ITIH4 were fixed, permeabilized and stained with rat anti-human ITIH4 Polyclonal Antibodies diluted 1/50 and Alexa488 goat anti rat IgG secondary antibody. Nuclei were counterstained with DAPI.



**Fig.2 Flow cytometry:** Untransfected (black) and transfected with ICAfectin 441 and plasmid encoding human ITIH4 (red) HeLa cells were fixed, permeabilized and stained with rat anti-human ITIH4 Polyclonal Antibodies diluted 1/100 and R-PE goat anti rat IgG secondary antibody.



**Fig.3 ELISA:** Lysates of untransfected and transfected HeLa cells with ICAfectin441 and plasmid encoding human ITIH4 were coated in 96 wells plate. Determination anti-human ITIH4 polyclonal antibodies in the rat sera was performed by using HRP goat anti rabbit IgG secondary antibody.

## RELATED PRODUCT:

Product Name	Antibody Specificity	Host Species	Application	Quantity	Maker	Cat#
Anti Human ITIH4 Polyclonal Antibody	Human / Rat	Brown Norway Rat	IHC / FCM / ELISA	50 UL	CAC	ICA-TG2-RTP1
Anti Human ITIH4 Polyclonal Antibody	Human / Rat	Sprague Dawley Rat	IHC / FCM / ELISA	50 UL	CAC	ICA-TG2-RTP2

Developed by In-Cell-Art



*For research use only, Not for diagnostic use.*



**COSMO BIO Co., LTD.**

【JAPAN】

TOYO EKIMAE BLDG. 2-20, TOYO 2-CHOME,  
KOTO-KU. TOKYO 135-0016, JAPAN  
Phone: +81-3-5632-9610  
FAX: +81-3-5632-9619  
URL: <https://www.cosmobio.co.jp/>



**COSMO BIO USA**

【Outside Japan】

2792 Loker Ave West, Suite 101  
Carlsbad, CA 92010, USA  
email: [info@cosmobiousa.com](mailto:info@cosmobiousa.com)  
Phone/FAX: (+1) 760-431-4600  
URL: [www.cosmobiousa.com](http://www.cosmobiousa.com)