



MONOCLONAL ANTIBODY

For research use only. Not for clinical diagnosis.

Catalog No. CTB-LC3-1-50

Anti LC3 (Clone: LC3.No.6)

BACKGROUND

LC3B is one of the mammalian Atg8 homologs and widely used as an autophagosome marker. Immediately after synthesis, LC3 is processed by Atg4 and becomes LC3-I. Upon induction of autophagy, the C-terminal glycine of LC3-I is conjugated to phosphatidylethanolamine, resulting in formation of membrane-bound LC3-II. Most LC3-II is thought to be present on autophagosome membrane. The autophagosome subsequently fuses with a lysosome, where inside materials, including LC3-II, are degraded. The expression level of LC3-II generally correlates with the number of autophagosome.

Product type	Primary antibodies
Host	Mouse
Form	Liquid Protein G purified PBS (pH7.4) with 1% BSA and less than 0.1% NaN ₃ as a preservative.
Volume	500 µl
Concentration	0.1 mg/ml
Specificity	LC3
Antigen	Human Recombinant LC3
Clone	LC3.No.6
Isotype	IgG2b

Application notes

WB

Recommended use

Recommended dilutions

Western blotting, 1/500 to 1/1,000

Predicted molecular weight: LC3-I is 18 kDa and LC3-II is 16 kDa.

Optimal dilutions/concentrations should be determined by the end user.

Cross reactivity

Mouse, Human

Storage

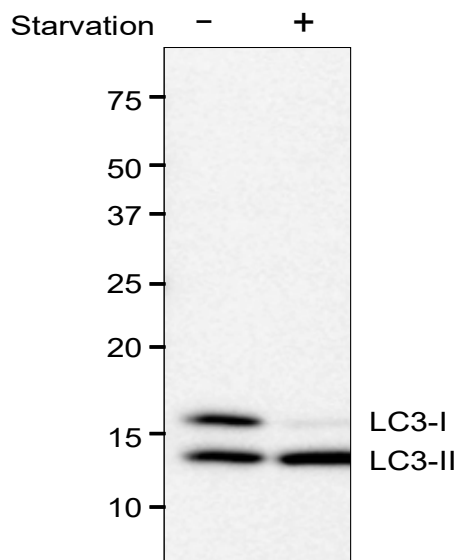
Store below -20°C (below -70°C for prolonged storage).

Aliquot to avoid cycles of freeze/thaw.

References

- 1) Kabeya, Y., Mizushima, N., Ueno, T., Yamamoto, A., Kirisako, T., Noda, T., Kominami, E., Ohsumi, Y. and Yoshimori, T. (2000) LC3, a mammalian homologue of yeast Apg8p, is localized in autophagosome membranes after processing. *EMBO J.* **19**: 5720-8. PMID: 11060023
- 2) Mizushima, N., Yoshimori, T. (2007) How to interpret LC3 immunoblotting. *Autophagy.* **3**: 542-5. PMID: 17611390

Example Assay Data



IB : anti-LC3B Mouse mono at 1/1,000 dilution for O/N

Fig.1 Western Blot analysis

MEF +/- Starvation 2 hr

SDS-PAGE (MEF lysate 15 µg/lane, 15% gel)

Transfer to PVDF membrane (semi-dry blotter, 100 mA/gel 1hr)

Immunoblot for LC3B

Expose ECL 5min

For research use only. Not for clinical diagnosis.



COSMO BIO Co., LTD.

[JAPAN]

TOYO EKIMAE BLDG. 2-20, TOYO 2-CHOME,
KOTO-KU. TOKYO 135-0016, JAPAN

Phone: +81-3-5632-9610

FAX: +81-3-5632-9619

URL: <https://www.cosmobio.co.jp/>



COSMO BIO USA

[Outside Japan]

2792 Loker Ave West, Suite 101
Carlsbad, CA 92010, USA

email: info@cosmobiousa.com

Phone/FAX: (+1) 760-431-4600

URL: www.cosmobiousa.com