



POLYCLONAL ANTIBODY

For research use only. Not for clinical diagnosis.

Catalog No. CNP- WB-310

Anti POR

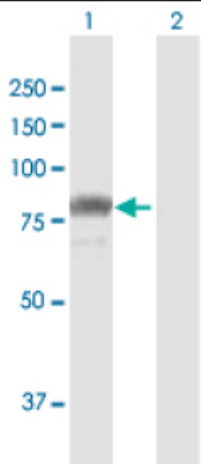
Product type	Primary antibodies
Immunogen	POR (AAH34277.1, 1 a.a. ~ 680 a.a) full-length human protein.
Form	Liquid Protein A purified
Volume	100ul
Specificity	Human
Host	Rabbit

Immunogen Sequence
 MINMGDSHVDTSSSTVSEAVAEEVSLFSMTDMILFSLIVGLLTYWFLFRKKKEEVPEFTKI
 QTLTSSVRESSFVEKMKKTGRNIIVFYGSQTGTAEFANRLSKDAHRYGMRGMSADPEEY
 DLADLSSLPEIDNALVVFCMATYGEDPTDNAQDFYDWLQETDVDLSGVKFAVFGLGNKT
 YEHFNAMGKYVDKRLEQLGAQRIFELGLGDDDDGNLEEDFITWREQFWLAVCEHFGVEATG
 EESSIRQYELVVHTDIDAAKVYMGEMGRLKSYENQKPPFDAKNPFLAAVTTNRKLNQGT
 RHLMHLELDISDSKIRYESGDHVAVYPANDSALVNQLGKILGADLDVMSLNNLDEESNK
 KHPFPCPTSRYRTALTYLDITNPPRTNVLYELAQYASEPSEQELLRKMSSSGEGKELYL
 SWVVEARRHILAILQDCPSLRPPIDHLCCELLPRLQARYYSIASSSKVHPNSVHICAVVVE
 YETKAGRINKGVATNWLRAKEPVGENGGRALVPMFVRKSQFRLPFKATTPVIMVGPPTGV
 APFIGFIQERAWLRQQGKEVGETLLYYGCRRSDEDYLYREELAQFHRDGALTQLNVAFSR
 EQSHKVVYQHLLKQDREHLWKLIEGGAHYVCGDARNMARDVQNTFYDIVAELGAMEHAQ
 AVDYIKLMTKGRYSLDVWS

Gene Alias CPR, CYPOR, DKFZp686G04235, FLJ26468, P450R

Application notes **WB**
 Antibody dilution: 1:1000 ~ 1:2000. Specific band of ~77.10 kDa using POR transfected 293T lysate.

Western Blotting (Transfected lysate)



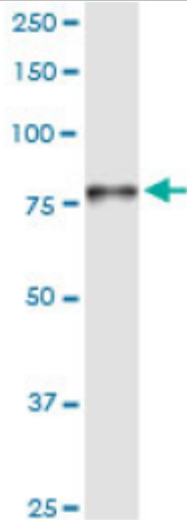
Western Blot analysis of POR expression in transfected 293T cell line by POR rabbit polyclonal antibody.

Lane 1: POR transfected lysate(77.10 KDa).

Lane 2: Non-transfected lysate.

Antibody dilution: 1:1000. Western Blot analysis of POR expression in human liver (Predicted Mw: 76.6900 kDa).

Western Blotting (Tissue lysate)



POR rabbit polyclonal antibody. Western Blot analysis of POR expression in human liver.

Storage

For continuous use, store at 2-8°C for one-two days. For extended storage, store in -20°C freezer. Working dilution samples should be discarded if not used within 12 hours.

For research use only. Not for clinical diagnosis.



COSMO BIO Co., LTD.

Inspiration for Life Science

TOYO 2CHOME, KOTO-KU, TOKYO, 135-0016, JAPAN

URL: <http://www.cosmobio.co.jp>

e-mail: export@cosmobio.co.jp

[Outside Japan] Phone : +81-3-5632-9617

[国内連絡先] Phone : +81-3-5632-9610

FAX : +81-3-5632-9618

FAX : +81-3-5632-9619