



POLYCLONAL ANTIBODY

For research use only. Not for clinical diagnosis.

Catalog No. CNP- WB-306

Anti FOXH1

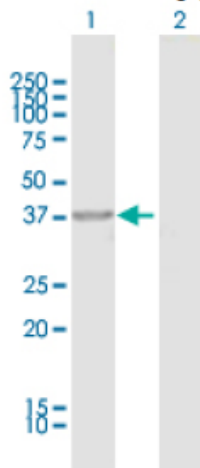
Product type	Primary antibodies
Immunogen	FOXH1 (AAI11605.1, 1 a.a. ~ 365 a.a) full-length human protein.
Form	Liquid Protein A purified
Volume	100ul
Specificity	Human
Host	Rabbit

Immunogen Sequence
MGPCSGSRLGPPEAESPSQPPKRRKKRYLRHDKPPYTYLAMIALVIQAAPSRRLKLAQII
RQVQAVFPFFREDYEGWKDSIRHNLSSNRCFRKVPKDKPAKQAKGNFWAVDVS LIPAEAL
RLQNTALCRRWQNGGARGAFKDLGPYVLHGRPYRPPSPPPPPSEGF SIKSLLGGSGEGA
PWPGLAPQSSPVPAGTGNSGEEAVTPPLPSSERPLWPLCPLPGPTRVEGETVQGG AIGP
STLSPEPRAWPLHLLQGTAVPGGRSSGGHRASLWGQLPTS YLPIYTPNVVMPLAPPPTSC
PQCPSTSPAYWGVAPETRGPPLLCDLDALFQGVPPNKSIYDVVWVSHPRDLAAPGPGWLL
SWCSL

Gene Alias FAST-1, FAST1

Application notes **WB**
Antibody dilution: 1:1000 ~ 1:2000. Specific band of ~40.15 kDa using FOXH1 transfected 293T lysate.

Western Blotting (Transfected lysate)



Western Blot analysis of FOXH1 expression in transfected 293T cell line by FOXH1 rabbit polyclonal antibody.

Lane 1: FOXH1 transfected lysate(40.15 KDa).

Lane 2: Non-transfected lysate.

Storage

For continuous use, store at 2-8°C for one-two days. For extended storage, store in -20°C freezer. Working dilution samples should be discarded if not used within 12 hours.

For research use only. Not for clinical diagnosis.



COSMO BIO Co., LTD.

Inspiration for Life Science

TOYO 2CHOME, KOTO-KU, TOKYO, 135-0016, JAPAN

URL: <http://www.cosmobio.co.jp>

e-mail: export@cosmobio.co.jp

[Outside Japan] Phone : +81-3-5632-9617

[国内連絡先] Phone : +81-3-5632-9610

FAX : +81-3-5632-9618

FAX : +81-3-5632-9619