



POLYCLONAL ANTIBODY

For research use only. Not for clinical diagnosis.

Catalog No. CNP- WB-165

Anti AZGP1

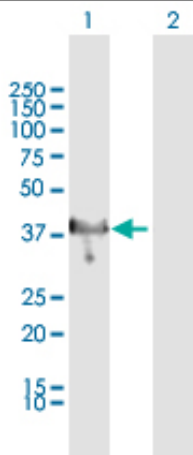
Product type	Primary antibodies
Immunogen	AZGP1 (NP_001176.1, 1 a.a. ~ 298 a.a) full-length human protein.
Form	Liquid Protein A purified
Volume	100ul
Specificity	Human
Host	Rabbit

Immunogen Sequence
MVRMVPVLLSLLLLGPAVPQENQDGRYSLTYIYTGLSKHVEDVPAFQALGSLNDLQFFR
YNSKDRKSQPMGLWRQVEGMEDWKQDSQLQKAREDIFMETLKDIVEYYNDSNGSHVLQGR
FGCEIENNRSSGAFWKYYYDGDYIEFNKEIPAWVPFDPAAQITKQKWEAEPVYVQRAKA
YLEEECPATLRKYLKYSKNILDRQDPPSVVVTSHQAPGEKKKLKCLAYDFYPGKIDVHWT
RAGEVQEPELRGDVLHNGNGTYQSWVVAVPPQDTAPYSCHVQHSSLAQPLVVPWEAS

Gene Alias ZA2G, ZAG

Application notes **WB**
Antibody dilution: 1:1000 ~ 1:2000. Specific band of ~34.30 kDa using AZGP1 transfected 293T lysate.

Western Blotting (Transfected lysate)



Western Blot analysis of AZGP1 expression in transfected 293T cell line by AZGP1 rabbit polyclonal antibody.

Lane 1: AZGP1 transfected lysate(34.30 KDa).

Lane 2: Non-transfected lysate.

Storage

For continuous use, store at 2-8°C for one-two days. For extended storage, store in -20°C freezer. Working dilution samples should be discarded if not used within 12 hours.

For research use only. Not for clinical diagnosis.



COSMO BIO Co., LTD.

Inspiration for Life Science

TOYO 2CHOME, KOTO-KU, TOKYO, 135-0016, JAPAN

URL: <http://www.cosmobio.co.jp>

e-mail: export@cosmobio.co.jp

[Outside Japan] Phone : +81-3-5632-9617

[国内連絡先] Phone : +81-3-5632-9610

FAX : +81-3-5632-9618

FAX : +81-3-5632-9619