



POLYCLONAL ANTIBODY

For research use only. Not for clinical diagnosis.

Catalog No. CNP-SOX9-077

Anti SOX9

Product type	Primary antibodies
Immunogen	SOX9 (NP_000337.1, 1 a.a. ~ 509 a.a) full-length human protein.
Form	Liquid Protein A purified
Volume	100ul
Specificity	Human
Host	Rabbit

Immunogen Sequence

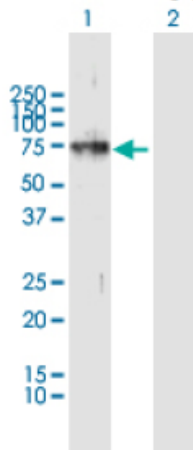
MNLLDPFMKMTDEQEKGKLSGAPSPTMSEDSAGSPSPSGSGSDTENTRPQENTFPKGEPL
 KKESEEDKFPVCIREAVSQVLKGYDWTLVPMMPVRVNGSSKNKPHVKRPMNAFMVWAQAAR
 RKLADQYPHLHNAELSKTLGKLWRLLENESEKRPVVEEAERLRVQHKKDHPDYKYQPRRRK
 SVKNGQAEAEAEATEQTHISPNAIFKALQADSPHSSSGMSEVHSPGEHSGQSQGPPTPPTT
 PKTDVQPGKADLKREGRPLPEGGRQPPIDFRDVIDIGELSSDVISNIETFDVNEFDQYLPP
 NGHPGVPATHGQVITYTGSYGISSTAATPASAGHVWMSKQQAPPPPPQPPQAPPAPQAPP
 QPQAAPPQQPAAPPQQPQAHTLTLSSEPGQSQRTHIKTEQLSPSHYSEQQQHSPQQIAY
 SPFNLPHYSPSYPPITRSQYDYTDHQNSSSYSHAAGQGTGLYSTFTYMNPAQRPMYTP
 ADTSGVPSIPQTHSPQHWEQPVYTQLTRP

Gene Alias CMD1, CMPD1, SRA1

Application notes

WB
 Antibody dilution: 1:1000 ~ 1:2000. Specific band of ~56.10 kDa using SOX9 transfected 293T lysate.

Western Blotting (Transfected lysate)



Western Blot analysis of SOX9 expression in transfected 293T cell line by SOX9 rabbit polyclonal antibody.

Lane 1: SOX9 transfected lysate(56.10 KDa).
 Lane 2: Non-transfected lysate.

I

Storage

For continuous use, store at 2-8°C for one-two days. For extended storage, store in -20°C freezer. Working dilution samples should be discarded if not used within 12 hours.

For research use only. Not for clinical diagnosis.



COSMO BIO Co., LTD.

Inspiration for Life Science

TOYO 2CHOME, KOTO-KU, TOKYO, 135-0016, JAPAN

URL: <http://www.cosmobio.co.jp> e-mail: export@cosmobio.co.jp

[Outside Japan] Phone : +81-3-5632-9617 [国内連絡先] Phone : +81-3-5632-9610

FAX : +81-3-5632-9618

FAX : +81-3-5632-9619