



POLYCLONAL ANTIBODY

For research use only. Not for clinical diagnosis.

Catalog No. CNP-RAD51L1-506

Anti RAD51L1

Product type	Primary antibodies
Immunogen	RAD51L1 (NP_598193.2, 1 a.a. ~ 384 a.a) full-length human protein.
Form	Liquid Protein A purified
Volume	100ul
Specificity	Human
Host	Rabbit

Immunogen Sequence
MGSKCLKRVGLSQELCDRLSRHQILTCQDFLCLSPLELMKVTGLSYRQVHELLCMVSRAC
APKMQTAYGIKAQRSADFSAPFLSTTLSALDEALHGGVACGSLTEITGPPGCGKTQFCIM
MSILATLPTNMGGLEGAVVYIDTESAFSAERLVEIAESRFPRYFNTEEKLLLTSSKVVHLY
RELTCDEVLQRIESLEEEIISKGIKLVILDSVASVVRKEFDAQLQGNLKERNKFLAREAS
SLKYLAEEFSPVILTNIQTTHLSGALASQADLVSPADDLSLSEGTSGSSCVIAALGNTW
SHSVNTRLILQYLDSEERRQILIAKSPLAPFTSFVYTIKEEGLVLQETTFCSVTQAELNWA
PEILPPQPPEQLGLQMCHHTQLIF

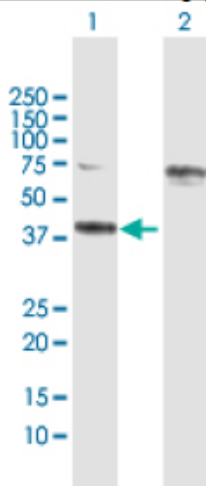
Gene Alias MGC34245, R51H2, RAD51B, REC2, hREC2

Application notes

WB

Antibody dilution: 1:1000 ~ 1:2000. Specific band of ~42.20 kDa using RAD51L1 transfected 293T lysate

Western Blotting (Transfected lysate)



Western Blot analysis of RAD51L1 expression in transfected 293T cell line by RAD51L1 rabbit polyclonal antibody.

Lane 1: RAD51L1 transfected lysate(42.20 KDa).

Lane 2: Non-transfected lysate.

Storage

For continuous use, store at 2-8°C for one-two days. For extended storage, store in -20°C freezer. Working dilution samples should be discarded if not used within 12 hours.

For research use only. Not for clinical diagnosis.



COSMO BIO Co., LTD.

Inspiration for Life Science

TOYO 2CHOME, KOTO-KU, TOKYO, 135-0016, JAPAN

URL: <http://www.cosmobio.co.jp>

e-mail: export@cosmobio.co.jp

[Outside Japan] Phone : +81-3-5632-9617

[国内連絡先] Phone : +81-3-5632-9610

FAX : +81-3-5632-9618

FAX : +81-3-5632-9619