



POLYCLONAL ANTIBODY

For research use only. Not for clinical diagnosis.

Catalog No. CNP-PYGL-026

Anti PYGL

Product type	Primary antibodies
Immunogen	PYGL (NP_002854.3, 1 a.a. ~ 847 a.a) full-length human protein.
Form	Liquid Protein A purified
Volume	100ul
Specificity	Human
Host	Rabbit

Immunogen Sequence

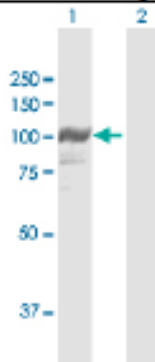
MAKPLTDQEKRRQISIRGIVGVENVVAELKKSFNRLHFTLVKDRNVATTRDYFFALAHTV
RDHLVGRWIRTQQHYDYKCPKRVYYLSLEFYMGRTLQNTMINLGLQNACDEAIYQLGLDI
EELEEIEEDAGLNGGLGRLAACFLDSMATLGLAAYGYGIRYEYGIFNQKIRDGWQVEEA
DDWLRYGNPWEKSRPEFMPLPVHFGYKVEHTNTGTKWIDTQVVLALPYDTPVPGYMNNTVN
TMRLWSARAPNDFNLRDFNVGDYIQAVLDRNLAENISRVLYPNDNFFEGKELRLKQEYFV
VAATLQDIIRRFKASKFGSTRGAGTVFDFPDQVAIQLNDTHPALAIPELMRIFVDIEKL
PWSKAWELTQKTFAYTNHTVLPALERWPVDLVEKLLPRHLEIIEINQKHLDRIVALFP
KDVDRLRRMSLIEEEGSKRINMAHLICIVGSHAVNGVAKIHSDIVKTKVFKDFSELEPDKF
QNKTNGITPRRWLLLCNPGLAELIAEKIGEDYVKDLSQLTKLHSFLGDDVFLRELAKVKQ
ENKLFKFSQFLETEYKVKINPSSMFDVQVKRIHEYKRQLLNCLHVITMYNRIKKDPKFLV
PRTVIIGGKAAPGYHMAKMIIKLITSVADVNNNDPMVGSKLKVFLENYRVSLAEKVIPA
TDLSEQISTAGTEASGTGNMFKMLNGALTIGTMDGANVEMAEAEAGEENLFIIFGMRIDDVA
ALDKKGYEAKEYYEALPELKLVIDQIDNGFFSPKQPDLFKDIINMLFYHDFKVFADYEA
YVKCQDKVSQLYMNPKAWNTMVLKNIAASGKFSSDRTIKEYAQNIWNVEPSDLKISLSNE
SNKVNGN

Gene Alias GSD6

Application notes

WB
Antibody dilution: 1:1000 ~ 1:2000. Specific band of ~97.10 kDa using PYGL transfected 293T lysate.

Western Blotting (Transfected lysate)



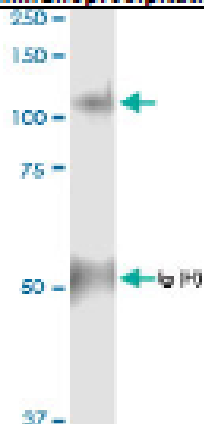
Western Blot analysis of PYGL expression in transfected 293T cell line by PYGL rabbit polyclonal antibody.

Lane 1: PYGL transfected lysate(97.10 kDa).
Lane 2: Non-transfected lysate.

IP*

Antibody dilution 1:15 ~ 1:60 for immunoprecipitation of PYGL transfected lysate.

Immunoprecipitation



Immunoprecipitation of PYGL transfected lysate using PYGL rabbit polyclonal antibody and Protein A Magnetic Bead, and immunoblotted with PYGL rabbit polyclonal antibody.

Storage

For continuous use, store at 2-8°C for one-two days. For extended storage, store in -20°C freezer. Working dilution samples should be discarded if not used within 12 hours.

For research use only. Not for clinical diagnosis.



COSMO BIO Co., LTD.

Inspiration for Life Science

TOYO 2CHOME, KOTO-KU, TOKYO, 135-0016, JAPAN

URL: <http://www.cosmobio.co.jp>

e-mail: export@cosmobio.co.jp

[Outside Japan] Phone : +81-3-5632-9617

[国内連絡先] Phone : +81-3-5632-9610

FAX : +81-3-5632-9618

FAX : +81-3-5632-9619