



POLYCLONAL ANTIBODY

For research use only. Not for clinical diagnosis.

Catalog No. CNP-PDCD2-500

Anti PDCD2

Product type	Primary antibodies
Immunogen	PDCD2 (NP_002589.2, 1 a.a. ~ 344 a.a) full-length human protein.
Form	Liquid Protein A purified
Volume	100ul
Specificity	Human
Host	Rabbit

Immunogen Sequence
MAAAGARPVELGFAESAPAWRLRSEQFPSKVGGRPAWLGAAGLPGPQALACELCGRPLSF
LLQVYAPLPGRPDAFHRCIFLFCQREQPCCAGLRVFRNQLPRKNDFYSEPPSENPPPET
GESVCLQLKSGAHLRCVCGCLGPKTCSRCHKAYYCSKEHQTLDWRLGHKQACAQPDHLDH
IIPDHNFLFPEFEIVIEDEIMPEVVEKEDYSEIIGSMGEALEEEELDSMAKHESREDKI
FQKFKTQIALEPEQILRYGRGIAPIWISGENIPQEKDIPDCPCGAKRILEFQVMPQLLNY
LKADRLGKSIDWGILAVFTCAESCSLGTGYTEEFVWKQDVTDP

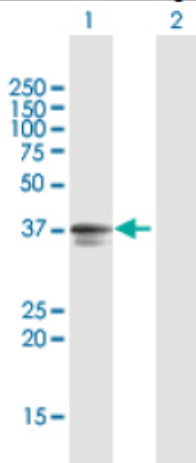
Gene Alias MGC12347, RP8, ZMYND7

Application notes

WB

Antibody dilution: 1:1000 ~ 1:2000. Specific band of ~38.60 kDa using PDCD2 transfected 293T lysate.

Western Blotting (Transfected lysate)



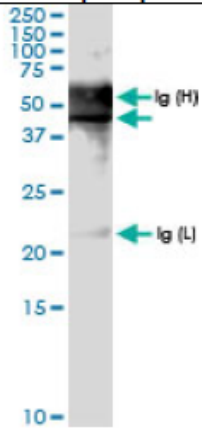
Western Blot analysis of PDCD2 expression in transfected 293T cell line by PDCD2 rabbit polyclonal antibody.

Lane 1: PDCD2 transfected lysate(38.60 KDa).

Lane 2: Non-transfected lysate.

IP

Immunoprecipitation



Immunoprecipitation of PDCD2 transfected lysate using PDCD2 rabbit polyclonal antibody and Protein A Magnetic Bead, and immunoblotted with PDCD2 rabbit polyclonal antibody.

Storage

For continuous use, store at 2-8°C for one-two days. For extended storage, store in -20°C freezer. Working dilution samples should be discarded if not used within 12 hours.

For research use only. Not for clinical diagnosis.



COSMO BIO Co., LTD.

Inspiration for Life Science

TOYO 2CHOME, KOTO-KU, TOKYO, 135-0016, JAPAN

URL: <http://www.cosmobio.co.jp>

e-mail: export@cosmobio.co.jp

[Outside Japan] Phone : +81-3-5632-9617

[国内連絡先] Phone : +81-3-5632-9610

FAX : +81-3-5632-9618

FAX : +81-3-5632-9619