



POLYCLONAL ANTIBODY

For research use only. Not for clinical diagnosis.

Catalog No. CNP-PCCB-016

Anti PCCB

Product type	Primary antibodies
Immunogen	PCCB (NP_000523.2, 1 a.a. ~ 539 a.a) full-length human protein.
Form	Liquid Protein A purified
Volume	100ul
Specificity	Human
Host	Rabbit

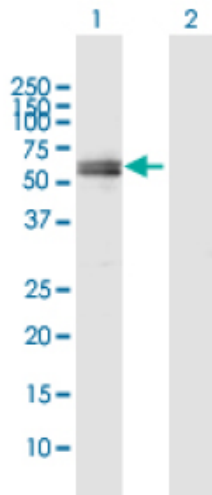
Immunogen Sequence

MAAALRVAAVGARLSV LASGLRAAVRSLCSQATSVNERIENKRRTALLGGGQRRIDAQHK
 RGKLTARERISLLLDPGSFVESDMFVEHRCADFGMAADKNKFPGDSVVTGRGRINGRLVY
 VFSQDFTVFGGSLSGAHAQKICKIMDQAITVGAPVIGLNDSSGGARIQEGVESLAGYADIF
 LRNVTASGVIPQISLIMGPCAGGAVYSPALTDFTFMVKDTSYLFITGPDVVKSVTNEDVT
 QEELGGAKTHTTMSGVAHRAFENDVDALCNLRDFFNYLPLSSQDPAPVRECHDPSDRLVP
 ELDTIVPLESTKAYNMVDIIHSVVDEREFFEIMPNYAKNIIVGFARMNGRTVGIVGNQPK
 VASGCLDINSSVKGARFVRFCDAFNIPLITFVDVPGFLPGTAQEYGGIIRHGAKLLYAFA
 EATVPKVTVITRKAYGGAYDVMSSKHLCGDTNYAWPTAEIIVMGAKGAVEIIFKGHENVE
 AAQAEYIEKFANPFPAAVRGRFVDDIIQPSSTRARICCDLDVLASKKVQRPWKRKHANIPL

Gene Alias DKFZp451E113

Application notes **WB**
 Antibody dilution: 1:1000 ~ 1:2000. Specific band of ~58.20 kDa using PCCB transfected 293T lysate.

Western Blotting (Transfected lysate)



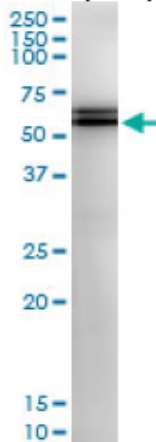
Western Blot analysis of PCCB expression in transfected 293T cell line by PCCB rabbit polyclonal antibody

Lane 1: PCCB transfected lysate(58.20 KDa).
 Lane 2: Non-transfected lysate.

IP

Antibody dilution 1:15 ~ 1:60 for immunoprecipitation of PCCB transfected lysate.

Immunoprecipitation



Immunoprecipitation of PCCB transfected lysate using PCCB rabbit polyclonal antibody and Protein A Magnetic Bead, and immunoblotted with PCCB purified mouse polyclonal antibody.

Storage

For continuous use, store at 2-8°C for one-two days. For extended storage, store in -20°C freezer. Working dilution samples should be discarded if not used within 12 hours.

For research use only. Not for clinical diagnosis.



COSMO BIO Co., LTD.

Inspiration for Life Science

TOYO 2CHOME, KOTO-KU, TOKYO, 135-0016, JAPAN

URL: <http://www.cosmobio.co.jp>

e-mail: export@cosmobio.co.jp

[Outside Japan] Phone : +81-3-5632-9617

[国内連絡先] Phone : +81-3-5632-9610

FAX : +81-3-5632-9618

FAX : +81-3-5632-9619