



**POLYCLONAL ANTIBODY**

*For research use only. Not for clinical diagnosis.*

**Catalog No. CNP-OXA1L-049**

# Anti OXA1L

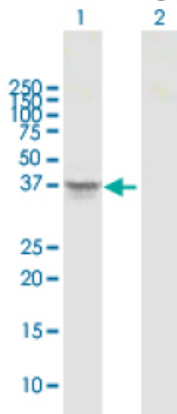
|                     |  |
|---------------------|--|
| <b>Product type</b> | Primary antibodies   |
| <b>Immunogen</b>    | OXA1L (Q15070, 1 a.a. ~ 435 a.a) full-length human protein |
| <b>Form</b>         | Liquid<br>Protein A purified                               |
| <b>Volume</b>       | 100ul  |
| <b>Specificity</b>  | Human  |
| <b>Host</b>         | Rabbit   |

**Immunogen Sequence**

MAMGLMCGRRELLRLLQSGRRVHSVAGPSQWLGKPLTTRLLFPVAPCCCRPHYLFLAASG  
PRSLSTSAISFAEVQVQAPPVVAATPSPTAVPEVASGETADVQTAAEQSFALGLGSYT  
PVGLIQNLLEFMHVDLGLPWWGAIAACTVFARCLIFPLIVTGQREARIHNLPEIQKFS  
SRIREAKLAGDHIEYYKASSEMALYQKKHGKLYKPLILPVTQAPIFISFFIALREMANL  
PVPSLQTGGLWWFQDLTVSDPIYILPLAVTATMWAVLELGAETGVQSSDLQWMRNVIRMM  
PLITLPITMHFPTAVFMYWLSSNLFSLVQVSLRIPAVRTVLKIPQRVVHDLKLPREG  
FLESFKKGWKNAEMTRQLREREREQMRNQLLELAARGPLRQTFTHNPLLQPGKDNPPNIPSS  
SSKPKSKYPWHDTLG

|                          |   |
|--------------------------|---|
| <b>Gene Alias</b>        | MGC133129   |
| <b>Application notes</b> | <b>WB</b><br>Antibody dilution: 1:1000 ~ 1:2000. Specific band of ~48.50 kDa using OXA1L transfected 293T lysate. |

**Western Blotting (Transfected lysate)**

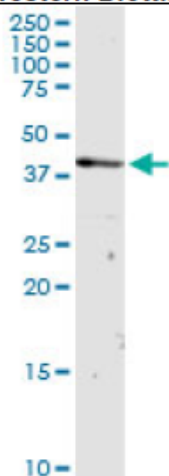


Western Blot analysis of OXA1L expression in transfected 293T cell line by OXA1L rabbit polyclonal antibody.

Lane 1: OXA1L transfected lysate(48.50 KDa).  
Lane 2: Non-transfected lysate.

Antibody dilution: 1:1000. Western Blot analysis of OXA1L expression in HepG2 (Predicted Mw: 48.5480 kDa).

**Western Blotting (Cell lysate)**

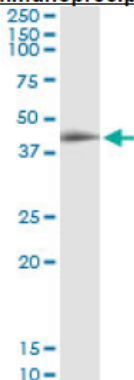


OXA1L rabbit polyclonal antibody. Western Blot analysis of OXA1L expression in HepG2.

**IP**

Antibody dilution 1:15 ~ 1:60 for immunoprecipitation of OXA1L transfected lysate.

**Immunoprecipitation**



Immunoprecipitation of OXA1L transfected lysate using OXA1L rabbit polyclonal antibody and Protein A Magnetic Bead, and immunoblotted with OXA1L mouse polyclonal antibody.

**Storage**

For continuous use, store at 2-8°C for one-two days. For extended storage, store in -20°C freezer. Working dilution samples should be discarded if not used within 12 hours.

*For research use only. Not for clinical diagnosis.*



**COSMO BIO Co., LTD.**

Inspiration for Life Science

TOYO 2CHOME, KOTO-KU, TOKYO, 135-0016, JAPAN

URL: <http://www.cosmobio.co.jp>

e-mail: [export@cosmobio.co.jp](mailto:export@cosmobio.co.jp)

[Outside Japan] Phone : +81-3-5632-9617

[国内連絡先] Phone : +81-3-5632-9610

FAX : +81-3-5632-9618

FAX : +81-3-5632-9619