

POLYCLONAL ANTIBODY

For research use only. Not for clinical diagnosis.

Catalog No. CNP- IP-343

Anti C17orf37

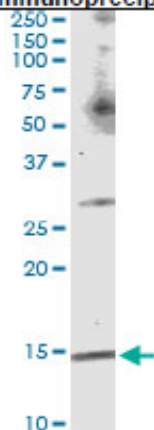
Product type	Primary antibodies
Immunogen	C17orf37 (NP_115715.3, 1 a.a. ~ 115 a.a) full-length human protein.
Form	Liquid Protein A purified
Volume	100ul
Specificity	Human
Host	Rabbit
Immunogen Sequence	MSGEPGQTSVAPPPEEVEPGSGVRIVVEYCEPCGFEATYLELASAVKEQYPGIEIESRLG GTGAFEIEINGQLVFSKLENGGFPYEKDLIEAIRRASNGETLEKITNSRPPCVIL

C35, MGC14832, ORB3, RDX12, XTP4

Application notes

IP
Antibody dilution 1:15 ~ 1:60 for immunoprecipitation of C17orf37 transfected lysate..

Immunoprecipitation



Immunoprecipitation of C17orf37 transfected lysate using C17orf37 rabbit polyclonal antibody and Protein A Magnetic Bead, and immunoblotted with C17orf37 mouse polyclonal antibody.

Storage

For continuous use, store at 2-8°C for one-two days. For extended storage, store in -20°C freezer. Working dilution samples should be discarded if not used within 12 hours.

For research use only. Not for clinical diagnosis.



COSMO BIO Co., LTD.

Inspiration for Life Science

TOYO 2CHOME, KOTO-KU, TOKYO, 135-0016, JAPAN

URL: <http://www.cosmobio.co.jp>

e-mail: export@cosmobio.co.jp

[Outside Japan] Phone : +81-3-5632-9617

[国内連絡先] Phone : +81-3-5632-9610

FAX : +81-3-5632-9618

FAX : +81-3-5632-9619