



POLYCLONAL ANTIBODY

For research use only. Not for clinical diagnosis.

Catalog No. CNP-GLA-592

Anti GLA

Product type	Primary antibodies
Immunogen	GLA (NP_000160.1, 1 a.a. ~ 429 a.a) full-length human protein.
Form	Liquid Protein A purified
Volume	100ul
Specificity	Human
Host	Rabbit

Immunogen Sequence
MQLRNPEHLGICALALRFLALVSWDIPGARALDNGLARTPTMGWLHWERFMCNLDCQEEP
DSCISEKLFMEMAELMVSEGWKDAGYEYLCIDDCWMAPQRDSEGR LQADPQRFPHGIRQL
ANYVHSKGLKLG IYADVGNKTCAGFPGSFGYYDIDAQTFADWGV DLLKFDGCYCDSENL
ADGYKHMSLALNRTGRSIVYSCEWPLYMWP FQKPNYTEIRQYCNHWRNFADIDDSWKS IK
SILDWTSFNQERIVDVAGPGGWNDPDMLVIGNFGLSWNQQVTQMALWAIMAAPLFMSNDL
RHIS PQAKALLQDKDVIAINQDPLGKQGYQLRQGDNFEVWERPLSGLAWAVAMINRQEIG
GPRSYTIAVASLGKGVACNPACFITQLLPVKRKLGFYEWTSRLRSHINPTGTVLLQLENT
MQMSLKDLL

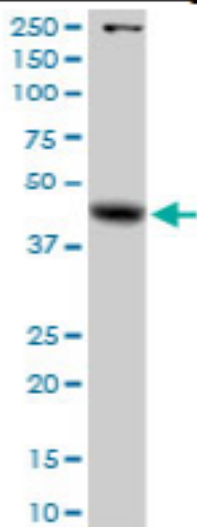
Gene Alias GALA

Application notes

WB

Antibody dilution: 1:1000. Western Blot analysis of GLA expression in HeLa (Predicted Mw: 48.7670 kDa).

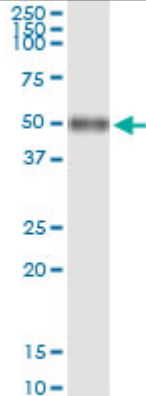
Western Blotting (Cell lysate)



PLA rabbit polyclonal antibody. Western Blot analysis of PLA expression in HeLa.

IP

Immunoprecipitation



Immunoprecipitation of GLA transfected lysate using GLA rabbit polyclonal antibody and Protein A Magnetic Bead, and immunoblotted with GLA mouse polyclonal antibody.

Storage

For continuous use, store at 2-8°C for one-two days. For extended storage, store in -20°C freezer. Working dilution samples should be discarded if not used within 12 hours.

For research use only. Not for clinical diagnosis.



COSMO BIO Co., LTD.

Inspiration for Life Science

TOYO 2CHOME, KOTO-KU, TOKYO, 135-0016, JAPAN

URL: <http://www.cosmobio.co.jp>

e-mail: export@cosmobio.co.jp

[Outside Japan] Phone : +81-3-5632-9617

[国内連絡先] Phone : +81-3-5632-9610

FAX : +81-3-5632-9618

FAX : +81-3-5632-9619