



POLYCLONAL ANTIBODY

For research use only. Not for clinical diagnosis.

Catalog No. CNP-GBE1-084

Anti GBE1

Product type	Primary antibodies
Immunogen	GBE1 (AAH12098.1, 1 a.a. ~ 702 a.a) full-length human protein.
Form	Liquid
	Protein A purified
Volume	100ul
Specificity	Human
Host	Rabbit

Immunogen Sequence

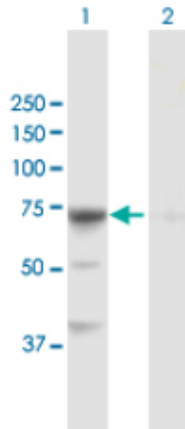
MAAPMTPAARPEDYEALNAALADVPELARLLEIDPYLKPYAVDFQRRYKQFSQILKNIG
 ENEGGIDKFSRGYESFGVHRCADGGLYCKEWAPGAEGVFLTGFNGWNPFSYPYKLDYG
 KWELYIPPKQNKSVLVPHGSKLKVVITSKSGEILYRISPWAKYVVREGDNVNYDWIHWDP
 EHSYEFKHSRPPKPRSLRIYESHVGISSHEGKVASYKHFTCNVLPRIKGLGYNCIQLMAI
 MEHAYYASFGYQITSSFAASSRYGSPEELQELVDTAHSMGIIVLLDVVHSHASKNSADGL
 NMFDTGTDSCYFHSGPRGTHDLWDSRLFAYSSWEVLRFLLSNIRWWLEEYRFDGFRFDGVT
 SMLYHHHGVGQGFSGDYSEYFGLQVDEDALTYLMLANHLVHTLCPDSITIAEDVSGMPAL
 CSPISQGGGGFDYRLAMAIPDKWIQLLKEFKDEDWNMGDIVYTLNRRYLEKCIAYAESH
 DQALVGDKSLAFWLMDAEMYTNMSVLPFTPVIDRGIQLHKMIRLITHGLGGEGYLNFMG
 NEFGHPEWLDFFPRKGNNESYHYARRQFHLLTDDDLLRYKFLNNFDRDMNRLEERYGWLAAP
 QAYVSEKHEGNKIIAFERAGLLFIFNFHPSKSYTDYRVGTALPGKFKIVLDSDAAEYGGH
 QRLDHSTDFSEAFEHNGRPYSLLVYIPSRVALILQNVDLPN

Gene Alias GBE

Application notes

WB
 Antibody dilution: 1:1000 ~ 1:2000. Specific band of ~80.40 kDa using GBE1 transfected 293T lysate.

Western Blotting (Transfected lysate)



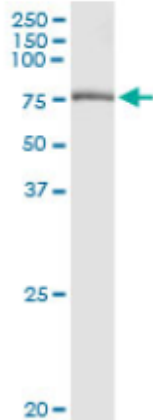
Western Blot analysis of GBE1 expression in transfected 293T cell line by GBE1 rabbit polyclonal antibody.

Lane 1: GBE1 transfected lysate(80.40 KDa).
 Lane 2: Non-transfected lysate.

IP

Antibody dilution 1:15 ~ 1:60 for immunoprecipitation of GBE1 transfected lysate.

Immunoprecipitation



Immunoprecipitation of GBE1 transfected lysate using GBE1 rabbit polyclonal antibody and Protein A Magnetic Bead, and immunoblotted with GBE1 purified mouse polyclonal antibody.

I

Storage

For continuous use, store at 2-8°C for one-two days. For extended storage, store in -20°C freezer. Working dilution samples should be discarded if not used within 12 hours.

For research use only. Not for clinical diagnosis.



COSMO BIO Co., LTD.

Inspiration for Life Science

TOYO 2CHOME, KOTO-KU, TOKYO, 135-0016, JAPAN

URL: <http://www.cosmobio.co.jp>

e-mail: export@cosmobio.co.jp

[Outside Japan] Phone : +81-3-5632-9617

[国内連絡先] Phone : +81-3-5632-9610

FAX : +81-3-5632-9618

FAX : +81-3-5632-9619