



**POLYCLONAL ANTIBODY**

*For research use only. Not for clinical diagnosis.*

**Catalog No. CNP-CHGN-257**

# Anti ChGn

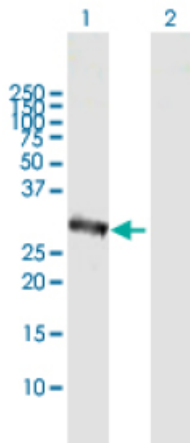
<b>Product type</b>	Primary antibodies
<b>Immunogen</b>	CSGALNACT1 (AAH60772.1, 1 a.a. ~ 297 a.a) full-length human protein..
<b>Form</b>	Liquid Protein A purified
<b>Volume</b>	100ul
<b>Specificity</b>	Human
<b>Host</b>	Rabbit

**Immunogen Sequence**  
MMMVRRGLLAWISRVVLLVLLCCAISVLYMLACTPKGDEEQLALPRANSPTGKEGYQAV  
LQEWEEQHRNYVSSLKRQIAQLKEELQERSEQLRNGQYQASDAAGLGLDRSPPEKTQADL  
LAFLHSQVDKAEVNAGVKLATEYAAVPFDSFTLQKVYQLETGLTRHPPEEKPVKDKRDEL  
VEAIESALETLNPAENSPNHRPYTASDFIEGIYRTERDKGTLYELTFKGDHKHEFKRLI  
LFRPFGPIMKVENEKLNMANTLINVIVPLAKRVDKFRQFMQNFPADEVFRCVPLSP

**Gene Alias** CSGalNAcT-1, ChGn, FLJ11264, FLJ13760, beta4GalNAcT

**Application notes** **WB**  
Antibody dilution: 1:1000 ~ 1:2000. Specific band of ~33.90 kDa using CSGALNACT1 transfected 293T lysate.

**Western Blotting (Transfected lysate)**



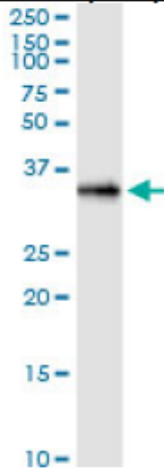
Western Blot analysis of CSGALNACT1 expression in transfected 293T cell line by CSGALNACT1 rabbit polyclonal antibody.

Lane 1: CSGALNACT1 transfected lysate(33.90 KDa).  
Lane 2: Non-transfected lysate.

## IP

Antibody dilution 1:15 ~ 1:60 for immunoprecipitation of CSGALNACT1 transfected lysate.

### Immunoprecipitation



Immunoprecipitation of CSGALNACT1 transfected lysate using CSGALNACT1 rabbit polyclonal antibody and Protein A Magnetic Bead, and immunoblotted with CSGALNACT1 purified mouse polyclonal antibody.

## Storage

For continuous use, store at 2-8°C for one-two days. For extended storage, store in -20°C freezer. Working dilution samples should be discarded if not used within 12 hours.

*For research use only. Not for clinical diagnosis.*



**COSMO BIO Co., LTD.**

Inspiration for Life Science

TOYO 2CHOME, KOTO-KU, TOKYO, 135-0016, JAPAN

URL: <http://www.cosmobio.co.jp>

e-mail: [export@cosmobio.co.jp](mailto:export@cosmobio.co.jp)

[Outside Japan] Phone : +81-3-5632-9617

[国内連絡先] Phone : +81-3-5632-9610

FAX : +81-3-5632-9618

FAX : +81-3-5632-9619