



POLYCLONAL ANTIBODY

For research use only. Not for clinical diagnosis.

Catalog No. CNP-ATAD3A-195

Anti ATAD3A

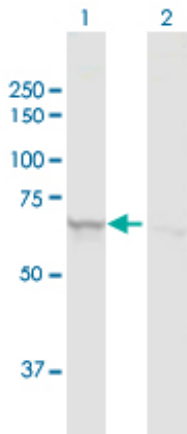
Product type	Primary antibodies
Immunogen	ATAD3A (AAH33109.1, 1 a.a. ~ 586 a.a) full-length human protein.
Form	Liquid Protein A purified
Volume	100ul
Specificity	Human
Host	Rabbit

Immunogen Sequence
MSWLFGINKGPKGEGAGPPPPLPPAQPGAEGGGDRGLGDRPAPKDKWSNFDPTGLERAAK
AARELEHSRYAKDALNLAQMQEQLQLEQQSKLKEYEAAVEQLKSEQIRAQAEERRKTLS
EETRQHQARAQYQDKLARQRYEDQLKQQQLLNEENLRKQEE SVQKQEAMRRATVEREMEL
RHKNEMLRVEAEARARAKAERENADIIREQIRLKAAEHRQTVLESIRTAGTLFGEGFRAF
VTDWDKVTATVAGLTLLAVGVYSAKNATLVAGRFIEARLGKPSLVRETSRITVLEALRHP
IQVSRLLSRPQDALEGVVLSPSLEARVRDIAIATRNTKKNRSLYRNILMYGPPGTGKTL
FAKKLALHSGMDYAIMTGGDVAPMGREGVTAMHKLFDWANTSRRGLLLFVDEADAFLRKR
ATEKISEDRLATLNAFLYRTGQHSNKFMLVLASNQPEQFDWAINDRINEMVHFDLPGQEE
RERLVRMYFDKYVLKPATEGKQRLKLAQFDYGRKCSEVARLTEGMSGREIAQLAVSWQAT
AYASEDGLVTEAMMDTRVQDAVQQHQKMCWLKAEGPGRGDEPSPS

Gene Alias FLJ10709

Application notes
WB
Antibody dilution: 1:1000 ~ 1:2000. Specific band of ~66.20 kDa using ATAD3A transfected 293T lysate.

Western Blotting (Transfected lysate)

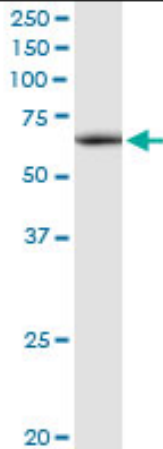


Western Blot analysis of ATAD3A expression in transfected 293T cell line by ATAD3A rabbit polyclonal antibody.

Lane 1: ATAD3A transfected lysate(66.20 KDa).
Lane 2: Non-transfected lysate.

Antibody dilution: 1:1000. Western Blot analysis of ATAD3A expression in human placenta (Predicted M_w : 71.3690 kDa).

Western Blotting (Tissue lysate)

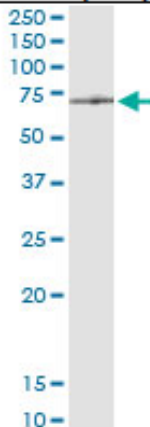


ATAD3A rabbit polyclonal antibody. Western Blot analysis of ATAD3A expression in human placenta.

IP

Antibody dilution 1:15 ~ 1:60 for immunoprecipitation of ATAD3A transfected lysate

Immunoprecipitation



Immunoprecipitation of ATAD3A transfected lysate using ATAD3A rabbit polyclonal antibody and Protein A Magnetic Bead, and immunoblotted with ATAD3A purified mouse polyclonal antibody.

Storage

For continuous use, store at 2-8°C for one-two days. For extended storage, store in -20°C freezer. Working dilution samples should be discarded if not used within 12 hours.

For research use only. Not for clinical diagnosis.



COSMO BIO Co., LTD.

Inspiration for Life Science

TOYO 2CHOME, KOTO-KU, TOKYO, 135-0016, JAPAN

URL: <http://www.cosmobio.co.jp>

e-mail: export@cosmobio.co.jp

[Outside Japan] Phone : +81-3-5632-9617

[国内連絡先] Phone : +81-3-5632-9610

FAX : +81-3-5632-9618

FAX : +81-3-5632-9619