



MONOCLONAL ANTIBODY

Catalog No. CLI-07001N

Anti-canine CD56

Product type	Primary antibodies
Host	Mouse
Source	Mouse ascites
Form	Liquid Purified IgG prepared by affinity chromatography on Protein A from immunized mouse ascites
Volume (Concentration)	100 µg Reconstitute with sterile PBS containing 0.09% sodium azide
Specificity	canine CD56
Antigen	Synthetic protein sequence derived from canine CD56
Clone	K9BYU
Isotype	Mouse IgG

Application notes WB (Not tested by IHC)

Recommended use

Recommended dilutions

Western blotting, 1/200 - 1/1000

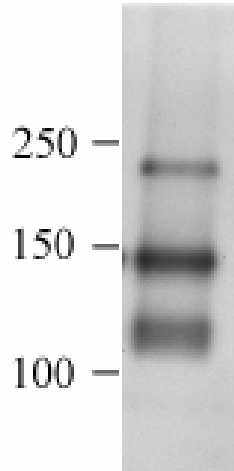
Optimal dilutions/concentrations should be determined by the end user.

Staining Pattern

Cross reactivity Canine (Do not react with feline)

Storage Store at 4°C. Do not freeze.

- References**
- 1) Koike A., Uematsu Y., Bonkobara M., Yamaguchi T., Washizu T., Arai T.: 144th Annual Meeting of Japanese Society of Veterinary Science, I-39 (2007).
 - 2) Uematsu Y., Yamaguchi T., Koike A., Yagihara H., Hasegawa D., Matsuki N., Ono K., Washizu T., Arai T. and Bonkobara M.: Generation of monoclonal antibody against canine neural-cell adhesion molecule, Journal of Veterinary Medical Sciences, 70(8): 845-847 (2008).



Western blotting treated with anti-canine CD56 mAb (K9BYU) in canine brain tissue.

Manufactured by Canine-Lab., Inc.

For research use only. Not for clinical diagnosis.



COSMO BIO Co., LTD.

【JAPAN】

TOYO EKIMAE BLDG. 2-20, TOYO 2-CHOME,
KOTO-KU. TOKYO 135-0016, JAPAN
Phone: +81-3-5632-9610
FAX: +81-3-5632-9619
URL: <https://www.cosmobio.co.jp/>



COSMO BIO USA

【Outside Japan】

2792 Loker Ave West, Suite 101
Carlsbad, CA 92010, USA
email: info@cosmobioussa.com
Phone/FAX: (+1) 760-431-4600
URL: www.cosmobioussa.com