



MONOCLONAL ANTIBODY

For research use only. Not for clinical diagnosis

Catalog No. CEC-078

**Anti-SARS-CoV-2 (2019-nCoV) / COVID-19
S1 antibody [Clone : 1G11]**

BACKGROUND

SARS-CoV-2(2019-nCoV), a kind of coronaviruses, is causes of severe human respiratory disease COVID-19. The spike (S) protein of SARS-CoV-2, which plays a key role in the receptor recognition and cytomembrane fusion process, is composed of two domains, S1 and S2. The S1 subunit contains a receptor-binding domain that recognizes and binds to the host receptor angiotensin-converting enzyme-2 (ACE2).

| | |
|-------------------------|--|
| Product type | Primary antibody |
| Immunogen | Immunization with plasmid DNA encoding SARS-CoV-2 S1 (Val16-Arg685) protein |
| Host | Mouse |
| Myeloma | SP2 |
| Clone number | 1G11 |
| Isotype | IgG2b, κ |
| Source | Culture supernatant |
| Purification | Ion-exchange chromatography |
| Form | Liquid |
| Storage buffer | PBS containing 50% Glycerol, 0.05% ProClin 300 |
| Concentration | 1 mg/mL |
| Volume | 100 μ L |
| Label | Unlabeled |
| Specificity | SARS-CoV-2(2019-nCoV) S1 protein |
| Cross reactivity | - |
| Storage | Store below -20°C (below -70°C for prolonged storage) Aliquot to avoid cycles of freeze/thaw. |
| Other | Data Link : UniProtKB/Swiss-Prot P0DTC2 |

| | |
|--------------------------|---|
| Application notes | Recommended use WB, ICC, ELISA Not tested for other applications Recommended dilutions Western blotting: 1/5000 (Fig.1) Immunocytochemistry: 1/250 (Fig.2) ELISA: 1/5000 Optimal dilutions/concentrations should be determined by the end user. |
|--------------------------|---|

| | |
|-------------------|---|
| References | - |
|-------------------|---|

ANTIBODY CHARACTERIZATION

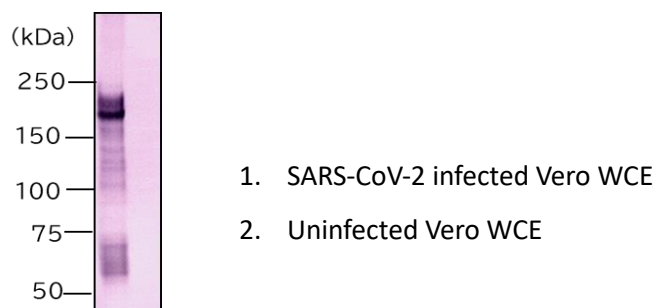


Fig.1. Western blot analysis of the SARS-CoV-2 infected or uninfected Vero cell extract using SARS-CoV-2 S1 antibody, 1G11.

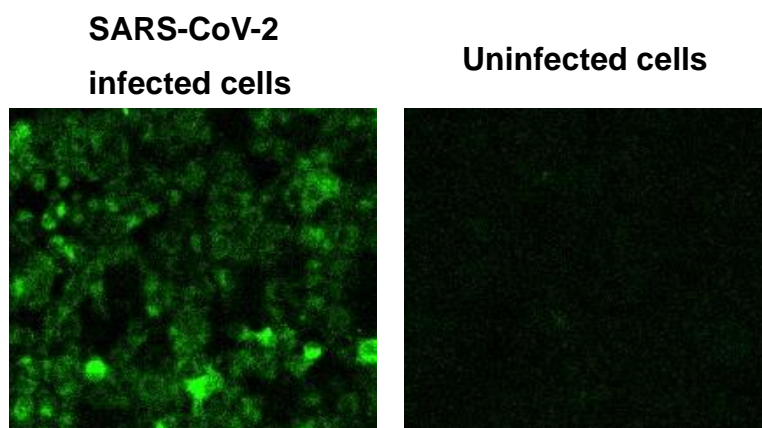


Fig.2. Immunocytochemical analysis of SARS-CoV-2 infected or Uninfected Vero cells using SARS-CoV-2 S1 antibody, 1G11.

For research use only, Not for diagnostic use.



COSMO BIO CO., LTD.

【JAPAN】

TOYO EKIMAE BLDG. 2-20, TOYO 2-CHOME,
KOTO-KU. TOKYO 135-0016, JAPAN
Phone: +81-3-5632-9610
FAX: +81-3-5632-9619
URL: <https://www.cosmobio.co.jp/>



COSMO BIO USA

【Outside Japan】

2792 Loker Ave West, Suite 101
Carlsbad, CA 92010, USA
email: info@cosmobiousa.com
Phone/FAX: (+1) 760-431-4600
URL: www.cosmobiousa.com