



**MONOCLONAL ANTIBODY**

For research use only. Not for clinical diagnosis

**Catalog No. CEC-076**

**Anti-SARS-CoV-2 (2019-nCoV) / COVID-19  
NP antibody [ Clone : 3A9 ]**

**BACKGROUND**

SARS-CoV-2(2019-nCoV), a kind of coronaviruses, is causes of severe human respiratory disease COVID-19. Coronaviruses are enveloped viruses with a positive-sense RNA genome and with a nucleocapsid of helical symmetry. Nucleocapsid protein is a most abundant protein of coronavirus. Nucleocapsid protein is a highly immunogenic phosphoprotein also implicated in viral genome replication and in modulating pathways.

<b>Product type</b>	Primary antibody
<b>Immunogen</b>	Synthetic peptide corresponding to N-terminus region (aa 23-40) of SARS-CoV-2 Nucleocapsid protein, STGSNQNGERSGARSKQR
<b>Host</b>	Mouse
<b>Myeloma</b>	SP2
<b>Clone number</b>	3A9
<b>Isotype</b>	IgG2b, $\kappa$
<b>Source</b>	Culture supernatant
<b>Purification</b>	Ion-exchange chromatography
<b>Form</b>	Liquid
<b>Storage buffer</b>	PBS containing 50% Glycerol, 0.05% ProClin 300
<b>Concentration</b>	1 mg/mL
<b>Volume</b>	100 $\mu$ L
<b>Label</b>	Unlabeled
<b>Specificity</b>	SARS-CoV-2(2019-nCoV)Nucleocapsid protein
<b>Cross reactivity</b>	No cross-reactivity with SARS-CoV Nucleocapsid protein (Fig.3)
<b>Storage</b>	Store below -20°C (below -70°C for prolonged storage) Aliquot to avoid cycles of freeze/thaw.
<b>Other</b>	<b>Data Link</b> : UniProtKB/Swiss-Prot A0A6C0T6Z7

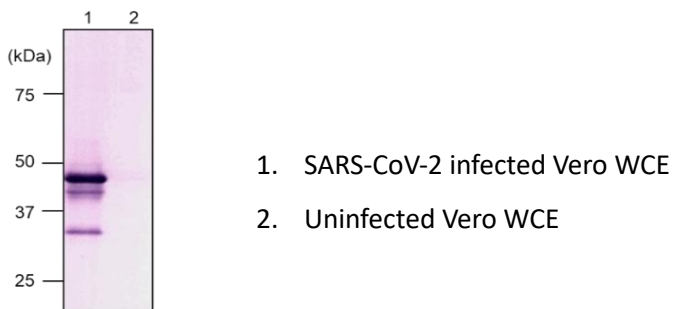
---

<b>Application notes</b>	<b>Recommended use</b> WB,ICC,ELISA Not tested for other applications <b>Recommended dilutions</b> Western blotting: 1/10000 (Fig.1) Immunocytochemistry: 1/500 (Fig.2) ELISA: 1/5000 (Fig.3) Optimal dilutions/concentrations should be determined by the end user.
--------------------------	--

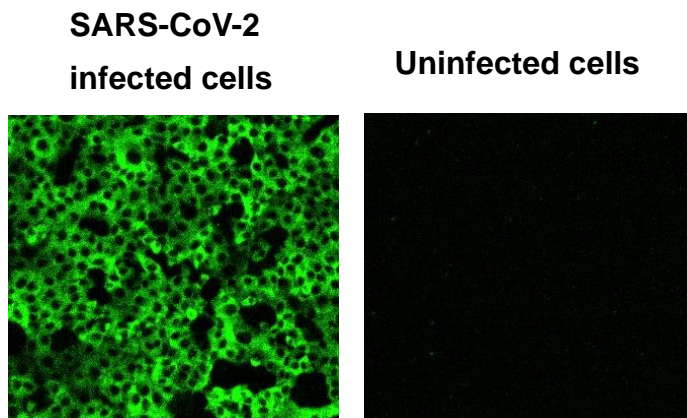
**References**

-

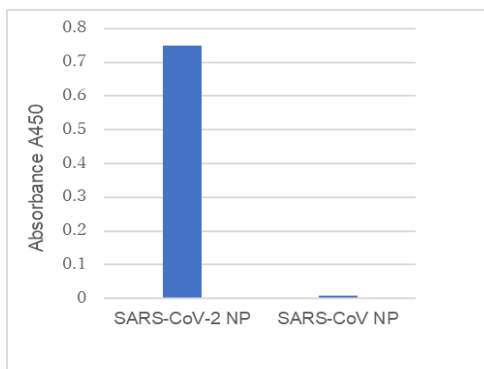
**ANTIBODY CHARACTERIZATION**



**Fig.1. Western blot analysis of the SARS-CoV-2 infected or uninfected Vero cell extract using SARS-CoV-2 NP antibody, 3A9.**



**Fig.2. Immunocytochemical analysis of SARS-CoV-2 infected or uninfected Vero cells using SARS-CoV-2 NP antibody, 3A9.**



**Fig.3. ELISA analysis of SARS-CoV-2 NP or SARS-CoV NP using SARS-CoV-2 NP antibody, 3A9.**

*For research use only, Not for diagnostic use.*

 <p><b>COSMO BIO Co., LTD.</b></p> <p>【JAPAN】 TOYO EKIMAE BLDG. 2-20, TOYO 2-CHOME, KOTO-KU. TOKYO 135-0016, JAPAN Phone: +81-3-5632-9610 FAX: +81-3-5632-9619 URL: <a href="https://www.cosmobio.co.jp/">https://www.cosmobio.co.jp/</a></p>	 <p><b>COSMO BIO USA</b></p> <p>【Outside Japan】 2792 Loker Ave West, Suite 101 Carlsbad, CA 92010, USA email: <a href="mailto:info@cosmobioussa.com">info@cosmobioussa.com</a> Phone/FAX: (+1) 760-431-4600 URL: <a href="http://www.cosmobioussa.com">www.cosmobioussa.com</a></p>
--	--