



**MONOCLONAL ANTIBODY**

For research use only. Not for clinical diagnosis

**Catalog No. CEC-049**

**Anti-Septin9 isoform2**

**BACKGROUND**

The septin GTPases family have several roles during cell division, cytoskeletal organization and membrane-remodeling events. Spetin 9, a member of the septin family, has several splicing variants and has been reported to be highly expressed in some cancer cells.

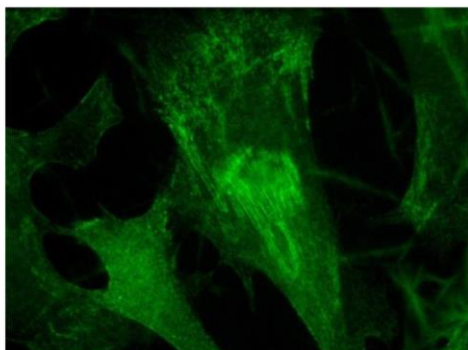
<b>Product type</b>	Primary antibody
<b>Immunogen</b>	Synthetic peptide corresponding to the N-terminus region (aa 1-23) of human Septin9 isoform2, MSDPAVNAQLDGIISDFEALKRSC
<b>Host</b>	Rat
<b>Clone number</b>	5A6F5
<b>Isotype</b>	IgG2a, $\lambda$
<b>Source</b>	Culture supernatant
<b>Purification</b>	Ion-exchange chromatography
<b>Form</b>	Liquid
<b>Presentation</b>	Purified monoclonal antibody in PBS, 50% Glycerol, 0.05%w/v ProClin300
<b>Concentration</b>	0.5 mg/mL
<b>Volume</b>	200 $\mu$ L
<b>Label</b>	Unlabeled
<b>Specificity</b>	Septin9 variant2
<b>Cross reactivity</b>	Human , Mouse, Rat Other species have not been tested.
<b>Storage</b>	Store below -20°C (below -70°C for prolonged storage) Aliquot to avoid cycles of freeze/thaw.
<b>Other</b>	-

---

<b>Application notes</b>	<b>Recommended use</b> WB, ICC Not tested for other applications. <b>Recommended dilutions</b> Western blotting, 1/1,000 to 1/5,000 Immunocytochemistry, 1/100 to 1/500 Optimal dilutions/concentrations should be determined by the end user.
--------------------------	---

<b>References</b>	1) Scientific Reports. (2017); 7: 44976. This antibody is used in ref.1
-------------------	--

## ANTIBODY CHARACTERIZATION



NHDF cell

Fig.1 Immunohistochemistry - Septin9 isoform2 (5A6F5) , NHDF cell

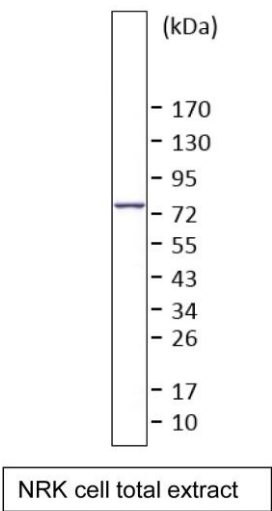


Fig.2 Western blot - Septin9 isoform2 (5A6F5) , NRK cell total extract

# SEPTINE 9: isoforms

	1		50		100
Septin 9_v1	MKKSYSGGTR TSSGRLRRIG DSSGPALKRS FEVEEVETPN STPPRRVQTP LLRATVASST QKFQDLGVKN SEPSARHVDS LSQRSFKASL RRVELSGPKA				
Septin 9_v2	.....MSDP AVNAQLDGI ISDFEALKRS FEVEEVETPN STPPRRVQTP LLRATVASST QKFQDLGVKN SEPSARHVDS LSQRSFKASL RRVELSGPKA				
Septin 9_v3	.....ME RDRISALKRS FEVEEVETPN STPPRRVQTP LLRATVASST QKFQDLGVKN SEPSARHVDS LSQRSFKASL RRVELSGPKA				
Septin 9_v4	.....				
Septin 9_v5	.....				
	101		150		200
Septin 9_v1	AEPVSRRETEL SIDISSKQVE NAGAIGPSRF GLKRAEVLGH KTPEAPRRT EITIVKQES AHRRMEPPAS KVPEVPTAPA TDAAPKRVEI QMPKPAEAPT				
Septin 9_v2	AEPVSRRETEL SIDISSKQVE NAGAIGPSRF GLKRAEVLGH KTPEAPRRT EITIVKQES AHRRMEPPAS KVPEVPTAPA TDAAPKRVEI QMPKPAEAPT				
Septin 9_v3	AEPVSRRETEL SIDISSKQVE NAGAIGPSRF GLKRAEVLGH KTPEAPRRT EITIVKQES AHRRMEPPAS KVPEVPTAPA TDAAPKRVEI QMPKPAEAPT				
Septin 9_v4	.....MEPPAS KVPEVPTAPA TDAAPKRVEI QMPKPAEAPT				
Septin 9_v5	.....				
	201		250		300
Septin 9_v1	APSPAQTLEN SEPAPVSQIQ SRLEPKQPP VAEATPRSQE ATEAAPSCVG DMADTPRDAG LKQAPASRNE KAPVDFGYVG IDSILEQMRR KAMKQGFEN				
Septin 9_v2	APSPAQTLEN SEPAPVSQIQ SRLEPKQPP VAEATPRSQE ATEAAPSCVG DMADTPRDAG LKQAPASRNE KAPVDFGYVG IDSILEQMRR KAMKQGFEN				
Septin 9_v3	APSPAQTLEN SEPAPVSQIQ SRLEPKQPP VAEATPRSQE ATEAAPSCVG DMADTPRDAG LKQAPASRNE KAPVDFGYVG IDSILEQMRR KAMKQGFEN				
Septin 9_v4	APSPAQTLEN SEPAPVSQIQ SRLEPKQPP VAEATPRSQE ATEAAPSCVG DMADTPRDAG LKQAPASRNE KAPVDFGYVG IDSILEQMRR KAMKQGFEN				
Septin 9_v5	.....MADTPRDAG LKQAPASRNE KAPVDFGYVG IDSILEQMRR KAMKQGFEN				
	301		350		400
Septin 9_v1	IMVVGQSGLG KSTLINTLFK SKISRKSVQP TSEERIPKTI EIKSITHDIE EKGVRMCLTV IDTPGFGDHI NNENCWQPI KKFINDQYKEY LQEEVNINRK				
Septin 9_v2	IMVVGQSGLG KSTLINTLFK SKISRKSVQP TSEERIPKTI EIKSITHDIE EKGVRMCLTV IDTPGFGDHI NNENCWQPI KKFINDQYKEY LQEEVNINRK				
Septin 9_v3	IMVVGQSGLG KSTLINTLFK SKISRKSVQP TSEERIPKTI EIKSITHDIE EKGVRMCLTV IDTPGFGDHI NNENCWQPI KKFINDQYKEY LQEEVNINRK				
Septin 9_v4	IMVVGQSGLG KSTLINTLFK SKISRKSVQP TSEERIPKTI EIKSITHDIE EKGVRMCLTV IDTPGFGDHI NNENCWQPI KKFINDQYKEY LQEEVNINRK				
Septin 9_v5	IMVVGQSGLG KSTLINTLFK SKISRKSVQP TSEERIPKTI EIKSITHDIE EKGVRMCLTV IDTPGFGDHI NNENCWQPI KKFINDQYKEY LQEEVNINRK				
	401		450		500
Septin 9_v1	KRIPDTRVHC CLYFIPATGH SLRPLDIEFM KRLSKVVNIV PVIKADTLT LEERVHFKQR ITADLLSNGI DVYPQKEFDE DSEDRLVNEK FREMIPFAVV				
Septin 9_v2	KRIPDTRVHC CLYFIPATGH SLRPLDIEFM KRLSKVVNIV PVIKADTLT LEERVHFKQR ITADLLSNGI DVYPQKEFDE DSEDRLVNEK FREMIPFAVV				
Septin 9_v3	KRIPDTRVHC CLYFIPATGH SLRPLDIEFM KRLSKVVNIV PVIKADTLT LEERVHFKQR ITADLLSNGI DVYPQKEFDE DSEDRLVNEK FREMIPFAVV				
Septin 9_v4	KRIPDTRVHC CLYFIPATGH SLRPLDIEFM KRLSKVVNIV PVIKADTLT LEERVHFKQR ITADLLSNGI DVYPQKEFDE DSEDRLVNEK FREMIPFAVV				
Septin 9_v5	KRIPDTRVHC CLYFIPATGH SLRPLDIEFM KRLSKVVNIV PVIKADTLT LEERVHFKQR ITADLLSNGI DVYPQKEFDE DSEDRLVNEK FREMIPFAVV				
	501		550		586
Septin 9_v1	GSDHEYQVNG KRILGRKTKW GTIEVENTTH CEFAYLRDLL IRTHMNIKD ITSSIHFEAY RVKRLNEGSS AMANGVEEKE PEAPEM				
Septin 9_v2	GSDHEYQVNG KRILGRKTKW GTIEVENTTH CEFAYLRDLL IRTHMNIKD ITSSIHFEAY RVKRLNEGSS AMANGVEEKE PEAPEM				
Septin 9_v3	GSDHEYQVNG KRILGRKTKW GTIEVENTTH CEFAYLRDLL IRTHMNIKD ITSSIHFEAY RVKRLNEGSS AMANGVEEKE PEAPEM				
Septin 9_v4	GSDHEYQVNG KRILGRKTKW GTIEVENTTH CEFAYLRDLL IRTHMNIKD ITSSIHFEAY RVKRLNEGSS AMANGVEEKE PEAPEM				
Septin 9_v5	GSDHEYQVNG KRILGRKTKW GTIEVENTTH CEFAYLRDLL IRTHMNIKD ITSSIHFEAY RVKRLNEGSS AMANGVEEKE PEAPEM				

For research use only, Not for diagnostic use.



COSMO BIO Co., LTD.

【JAPAN】  
 TOYO EKIMAE BLDG. 2-20, TOYO 2-CHOME,  
 KOTO-KU. TOKYO 135-0016, JAPAN  
 Phone: +81-3-5632-9610  
 FAX: +81-3-5632-9619  
 URL: <https://www.cosmobio.co.jp/>



COSMO BIO USA

【Outside Japan】  
 2792 Loker Ave West, Suite 101  
 Carlsbad, CA 92010, USA  
 email: [info@cosmobiousa.com](mailto:info@cosmobiousa.com)  
 Phone/FAX: (+1) 760-431-4600  
 URL: [www.cosmobiousa.com](http://www.cosmobiousa.com)